



Project no. 018340

Project acronym: EDIT

Project title: Toward the European Distributed Institute of Taxonomy

Instrument: Network of Excellence

Thematic Priority: Sub-Priority 1.1.6.3: "Global Change and Ecosystems"

C5.123 Selection of a representative group in collaboration with WP6 (exemplar groups) and WP7 (ATBI)

Due date of component: Month 48

Actual submission date: Month 48

Start date of project: 01/03/2006

Duration: 5 years

Organisation name of lead contractor for this component: 2 MNHN

Revision final

| Project co-funded by the European Commission within the Sixth Framework Programme (2002-2006) | | |
|--|---|----------|
| Dissemination Level | | |
| PU | Public | X |
| PP | Restricted to other programme participants (including the Commission Services) | |
| RE | Restricted to a group specified by the consortium (including the Commission Services) | |
| CO | Confidential, only for members of the consortium (including the Commission Services) | |

Introduction

The present component details the collaboration between the activity 5.6 (description and keys) and an EDIT exemplar group (the *Cichorieae* exemplar group). For activity 5.6, the aim of this collaboration is the visibility of the integration of descriptive data into the EDIT Common Data Model (CDM). For the *Cichorieae* exemplar group of the WP6, this collaboration could help to get the best of their descriptive data and better fit the needs of the *Cichorieae* Dataportal website users.

Choice of the exemplar group

The Paris (MNHN) team of the activity 5.6 is in frequent contact with the developers of the WP5 located in Berlin, that is why they contacted first the taxonomists working in the same institution (BGBM) on the *Cichorieae* exemplar group. This is a first step and the final aim for activity 5.6 is to evaluate the needs of the two other exemplar group teams (working on *Areaceae* and *Diptera*) in order to collaborate as well.

After evaluating how much descriptive content is already available for the *Cichorieae* tribe and in which form, possibilities of collaboration has been discussed.

Cichorieae descriptive data

The *Cichorieae* exemplar group has already some descriptive content available in structured format built with DeltaAccess

(<http://www.diversityworkbench.net/OldModels/Descriptions/index.html>).

Currently, the *Cichorieae* data base comprises c. 12.500 names of accepted taxa and about 27.250 additional synonyms. 308 characters have been defined and used in the DeltaAccess descriptions. The descriptive content is available for only a small part of the *Cichorieae* tribe which covers 93 genera and approximately 1400 species (plus several hundreds of micro-species in the genera *Hieracium*, *Pilosella* and *Taraxacum*) (screenshot in fig.1). This descriptive content in structured format is frequently updated and increased into the current DeltaAccess application.

The DeltaAccess functionality for the generation of natural language descriptions from structured descriptive data is successfully used and the resulting descriptions are displayed on the *Cichorieae* Dataportal website (example: http://wp6-cichorieae.e-taxonomy.eu/dataportal/cichorieae/?q=cdm_dataportal/taxon/c82ab783-ec76-45fb-a759-db7b2510bce4). So far 52 standardized descriptions of accepted taxa are available online; this number is continuously increasing.

Collaboration

The *Cichorieae* exemplar group team has formulated their priority with regards to descriptive data that is providing their Dataportal website with some interactive identification keys. Activity 5.6 can help in that way by providing its expertise on the use of some computer tools dedicated to descriptive data management and interactive identification.

To meet this requirement, a first subset of taxa (20 species of the genus *Crepis*) has been successfully imported into the XPER² (fig. 2) software thanks to SDD format generated by the last version of DeltaAccess (2.0). Some further analysis will be performed in order to maximize the effectiveness of this application, together with the addition of pictures illustrating the characters, which can be of great help during the identification process.

Activity 5.6 will benefit from the large *Cichorieae* descriptive dataset to test its current and next developments (generation of natural language descriptions, diagnoses and dichotomous keys from CDM descriptive data) and especially the newly available SDD-CDM import (and export).

A report on the achievement of this collaboration will be done in a milestone due on Month 56 (November 2010).

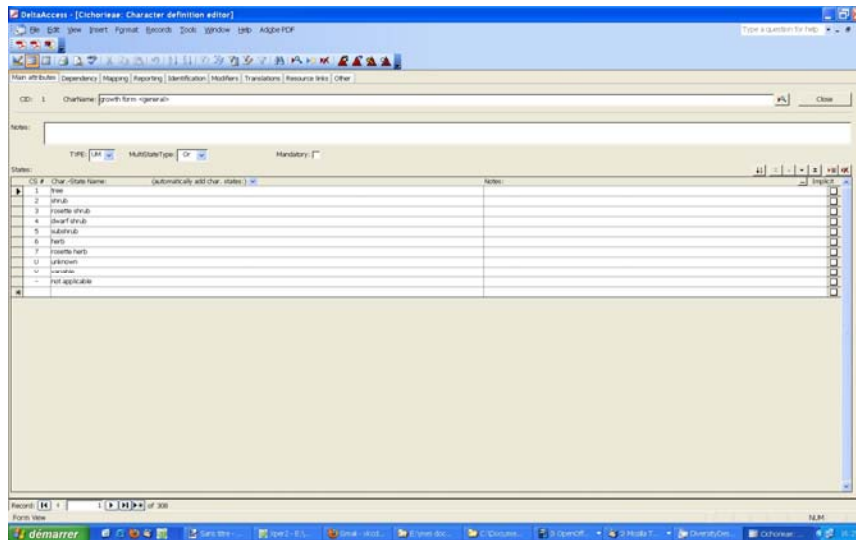


Figure 1: Screenshot of the DeltaAccess database for the management of Cichorieae descriptive data.

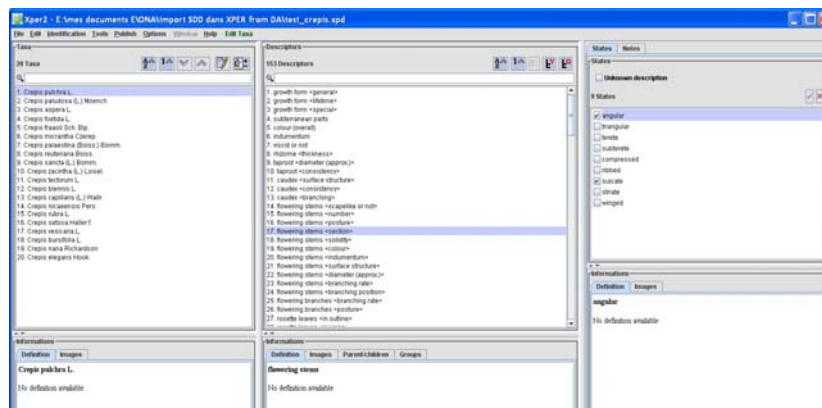


Figure 1: Screenshot of the Xper2 database on the Crepis genus.

Conclusion

This basic component aims at laying the foundations for collaboration between two distinct activities in EDIT. The principle is that both activities should benefit from this collaboration. In 5.6, we are also expecting that some results could be useful to evaluate more accurately the future users needs and then help us in writing the final user guide.