



User Manual for Taxonomic Editor (Version 2.1.0.) Version 4

Part of the EDIT Platform for Cybertaxonomy
Work Package 5: Tools, Sharing, Networking and Integration

<http://dev.e-taxonomy.eu/trac/wiki/TaxonomicEditor>

22nd April 2010

This manual was produced by the Royal Botanic Garden Edinburgh on behalf of the European Distributed Institute of Taxonomy. This is the third draft of the manual for the Taxonomic Editor and was based on Version 2.1.0.201002031058 and updated according to the Test version; it covers the basic functions of the Taxonomic Editor given in previous drafts with some additional functions. Updated versions of both the Taxonomic Editor and the user manual will be released via the EDIT WP5 website: <http://dev.e-taxonomy.eu/trac/wiki/>.



Royal
Botanic Garden
Edinburgh

Contents

1.0	Introduction to the Taxonomic Editor	1
1.1	About the Manual	2
2.0	Getting Started	3
2.1	Downloading the Taxonomic Editor	3
2.2	Extracting the Contents of the Compressed Folder (Internet Explorer).....	6
2.3	Extracting the Contents of the Compressed Folder (Mozilla Firefox).....	7
2.4	Creating a Desktop Shortcut (Windows only).....	8
2.5	Opening the Taxonomic Editor	9
2.6	Logging In	10
2.7	Downloading and Installing Updates	11
2.8	Enabling Unicode Characters	11
2.9	Removing the Taxonomic Editor.....	12
2.9.1	Windows XP and older Systems.....	13
2.9.2	Windows Vista	14
2.10	Creating Multiple Datasources	15
2.11	Connecting to a Different Datasource	17
3.0	Getting Started: Troubleshooting	19
3.1	Checking your version of Java Runtime Environment	19
3.2	Updating your version of Java Runtime Environment	19
4.0	Getting to Know the Taxonomic Editor	22
4.1	Parts of the Taxonomic Editor	22
4.2	The Menus	23
4.3	General Behaviours and Navigation	25
4.3.1	Mouse and Keyboard Functions	25

4.3.2	Changing Panel Sizes.....	25
4.3.3	Opening and Closing Panels.....	26
4.3.4	Navigating between Panels.....	26
4.4	The Freetext Panel.....	26
4.4.1	Activating Taxon Records in the Freetext Panel.....	27
4.4.2	Searching for a Taxon Record.....	27
4.4.3	Navigating between Taxon Records.....	29
4.4.4	Closing Taxon Records.....	29
5.0	Customising the Taxonomic Editor.....	31
5.1	The Preferences Menu.....	31
5.1.1	Show/Hide Options of Drop-Down Menus.....	31
5.1.2	Adding New Options to Drop-Down Menus.....	33
5.1.3	Editing Options of Drop-Down Menus.....	34
5.2	The Show View Menu.....	37
6.0	Creating and Building your Database.....	40
6.1	Note on terms and organisation within the Taxonomic Editor.....	40
6.2	Creating a New Taxonomic Tree.....	40
6.3	Adding Taxa to your Taxonomic Tree.....	46
6.3.1	Using the Right-Click Button.....	46
6.3.2	Using the File > New Menu.....	47
7.0	Editing your Taxa.....	52
7.1	Parsing Status Feedback.....	52
7.1.1	Red warning icon = Parsing has been unsuccessful.....	52
7.1.2	Orange warning icon = Parsing completed but checks are recommended.....	53
7.1.3	Black text only = No warning signal.....	53

7.1.4	A Successfully Parsed Taxon Record	53
7.2	Dealing with Parsing Problems	54
7.2.1	Rank.....	55
7.2.2	Uninomial and Specific Epithet	56
7.3	Adding the Nomenclatural Status of a Name using the Properties Sheet.....	57
7.4	Deleting a Taxon	59
7.5	Bulk Editing	60
7.5.1	About Bulk Editing.....	60
7.5.2	Bulk Editing Names	60
7.6	Saving your Work.....	62
8.0	Managing Taxonomic Relationships.....	65
8.1	Adding a Heterotypic Synonym	65
8.2	Adding a Homotypic Synonym.....	66
8.3	Saving Synonyms.....	66
8.4	Editing Synonyms.....	67
8.5	Deleting a Synonym	68
8.6	Changing a Synonym to an Accepted Name	68
8.7	Changing an Accepted Name to a Synonym	69
8.8	Moving the Position of Taxa within a Taxonomic Tree.....	70
9.0	Adding Descriptive Data to Taxon Record	72
9.1	Types of Descriptive Data	72
9.2	Opening the Descriptive Tab for a Taxon.....	72
9.3	Adding a Description Tree to a Taxon.....	74
9.4	Building a Description Tree by adding Descriptive Data Types	75
9.5	Adding Common Name Descriptive Data to a Taxon Record	77

9.6	Adding a Species Description to a Taxon Record.....	80
-----	---	----

1.0 Introduction to the Taxonomic Editor

The Taxonomic Editor has been developed as part of the EDIT Cyberplatform for Taxonomy; a collection of tools and services which together cover all aspects of the taxonomic workflow. EDIT is a collection of 28 leading European, North American and Russian institutions formed in the response to a call of the European Commission, issued in 2004, for a “network in Taxonomy for Biodiversity and Ecosystem Research”.

Development of the Taxonomic Editor is part of EDIT Work Package 5: Internet Platform for Cybertaxonomy: Tools, Sharing, Networking and Integration. The tools are all open access, free, do not require licenses, and are downloadable from the EDIT website. Data stored in the Taxonomic Editor will be linked to other applications of the Cyberplatform via the Common Data Model (CDM) Library, where the data is stored. So, for example, your Taxonomic Editor dataset can be easily published online using the EDIT DataPortal application that can extract your data from the CDM. No data transformation is required by you. The Editor also supports importing and exporting in a range of databases and taxonomic community data formats and import from Excel.

The goal of the Taxonomic Editor is to provide a next-generation tool that moves beyond the form-based data entry of web-based tools like the Berlin Model Web Editor. It has been designed with specific philosophies giving the user:

1. All the benefits of a database without rigid data entry rules.

A unique feature of the Taxonomic Editor is its parsing capability. Parsing is the action of recognising distinct elements within a string. This means that data can be entered as ‘free’ or unstructured text, and as you type the parser separates each element of the text string and puts them into the correct data fields within the database. This makes data entry easy, but also enables manipulation of data as in a standard database.

The core workflow involves:

- i. Entering data as a normal text string in a taxonomic style.
- ii. The data is parsed as it is entered.
- iii. Reviewing whether the data has been parsed correctly and editing if necessary.

2. Ability to enter data in the format required by the user.

A second defining feature of the Editor is that it has been designed to minimise system intervention so as not to hinder the work flow. Rather than enforcing data integrity upon input, warnings are given when any rules have been broken. When the mouse hovers over data that has been marked as problematic, the problem will be explained, along with possible corrections, however the software will not force you to change your data.

3. Useability and customisation options.

The Editor has been designed to feel intuitive keeping the number of new movements or gestures you must learn to a minimum. Also, the Taxonomic Editor allows for individual customisation of the fields within the data entry sheet to facilitate an efficient data entry process. For example, you can choose which taxonomic relationships and rank types are given as options, and for some data fields you can create your own options. There are also separate configurations for users using the Botanical and Zoological Codes of Nomenclature.

You will notice that not all of the features of the Taxonomic Editor are yet functional; development of the application and the manual are still ongoing. Version 3 of the Taxonomic Editor will be released in July 2010; smaller updates will be made available on the EDIT WP5 website.

1.1 About the Manual

Most of the manual has been produced whilst running the Taxonomic Editor on Microsoft Vista. If you have a different operating system your screen may have a slightly different appearance to the screen shots in the manual, however the actual work flows should not be affected. Where the work flows may differ these have been detailed separately, however, the manual has not yet been completed for use on Apple Mac systems.

This version of the manual for the Taxonomic Editor has been designed to provide an overview of the design philosophies and capabilities of the Taxonomic Editor. It is not intended to be exhaustive, but will allow you to make a basic taxonomic treatment. Additional sections will be made available from the EDIT website <http://dev.e-taxonomy.eu/trac/wiki/> or via the Help menu of the Taxonomic Editor.

Within the work flow descriptions that follow the symbol (>) indicates a progression from one step in a work flow to the next. Screen shots relate to the steps in the work flow given above the screen shot, not below. Red arrows given in screen shots from one window/menu/box to another indicates that the second will appear after carrying out the action in the first.

2.0 Getting Started

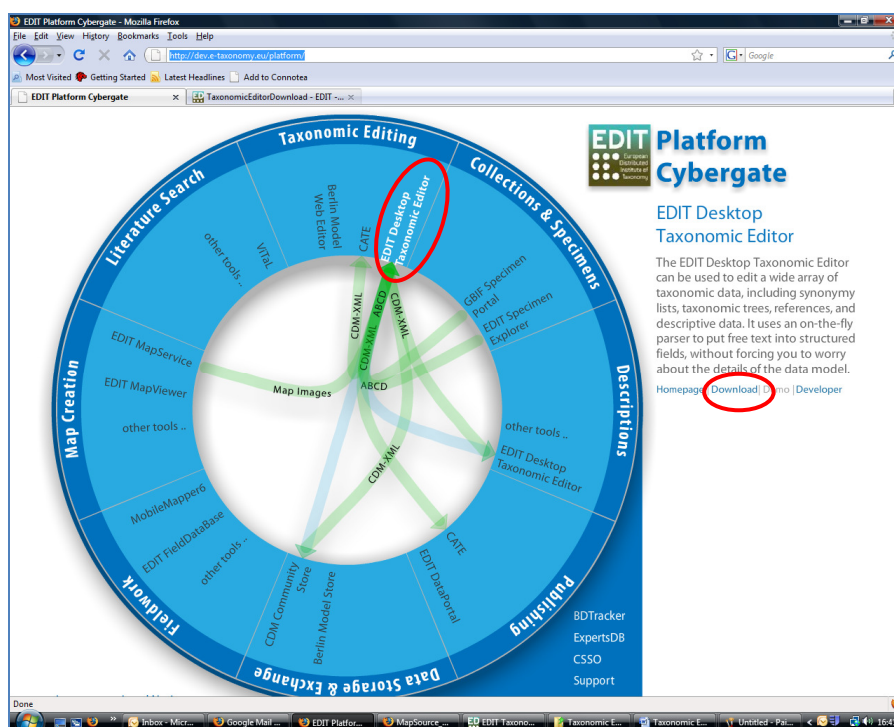
This section tells you how to:

- Download and install the Taxonomic Editor for the first time.
- Create a desktop shortcut.
- Install updates of previously installed features.
- Search for and install new features.
- Remove the Taxonomic Editor.
- Ensure that Unicode characters such as ♀ and ♂ are visible.

2.1 Downloading the Taxonomic Editor

The Taxonomic Editor, as well as other EDIT Cyberplatform components, can be downloaded via the Cybergate at <http://dev.e-taxonomy.eu/platform/>. There are no additional system features required for the Taxonomic Editor to work.

1. Click **EDIT Desktop Taxonomic Editor** within the Cybergate. A description of the Taxonomic Editor and further options will appear to the right of the Cybergate.
2. Click **Download** in the section on the right.



You will be taken to the Taxonomic Editor Download Site.

Alternatively, you can access the download site directly by entering <http://dev.e-taxonomy.eu/trac/wiki/TaxonomicEditorDownload> into the address bar of your browser.

3. Click the latest version of the Taxonomic Editor; the latest version will be specified.

Taxonomic Editor Download Site

The most recent version of the Taxonomic Editor will always be available here.

Downloads

Current stable release builds:

- Windows: [EDITTaxonomicEditor_win32.x86_v2.1.0.201020031058.zip](#)

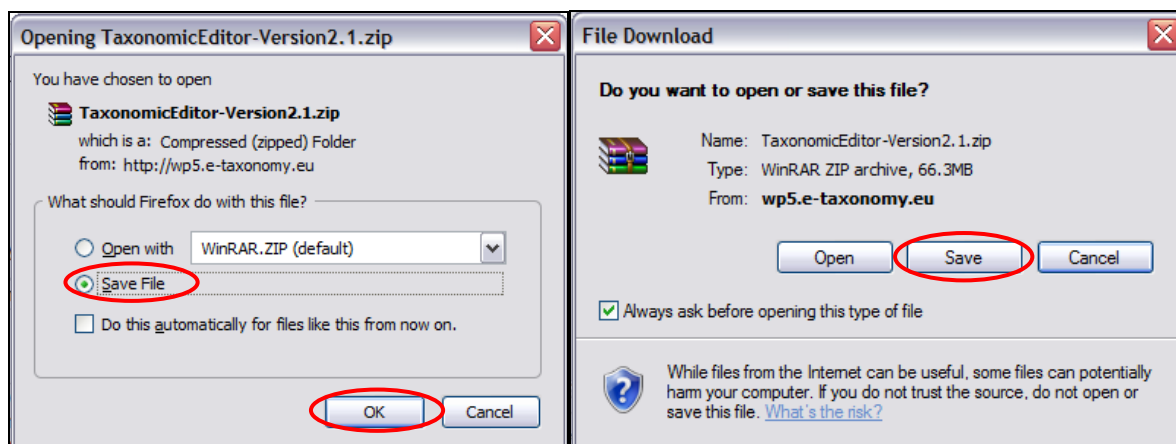
Older versions may be found in the [Archive](#)

We **strongly** recommend that before starting, you take a look at the following to get a feel for the basic functionality of the Editor:

- [Tax Editor Manual - Platform Version 2.1](#)

The following steps will differ slightly depending on whether you are using Mozilla Firefox or Internet Explorer and the operating system you are using. If you are using Mozilla Firefox on Vista, you will be taken straight to the “Save As” details pop-up box; go to Step 5. If you are using Internet Explorer or Mozilla Firefox on an older operating system such as Windows XP, you will see a pop-up box the same as or similar to the ones shown below; go to step 4.

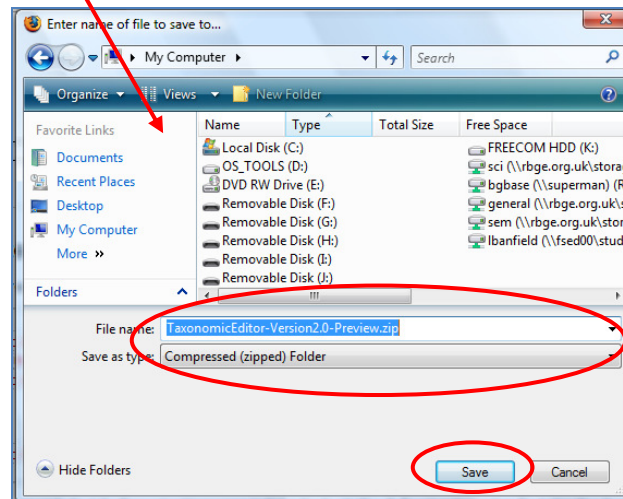
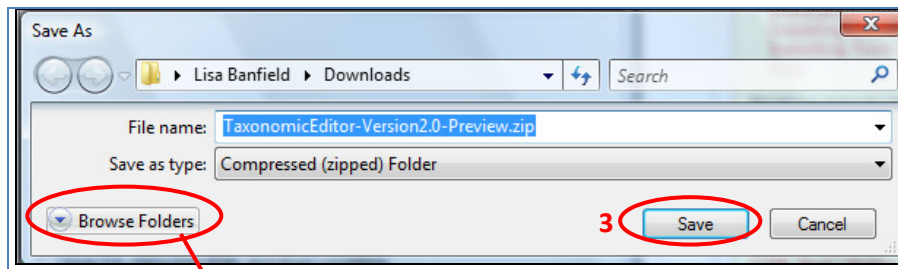
4. Click the **Save** button or choose the **Save** option. Click the **OK** button if necessary. The “Save As” details pop-up box will open; go to step 5.



Mozilla Firefox and Vista/Windows XP

Internet Explorer and Vista/Windows XP

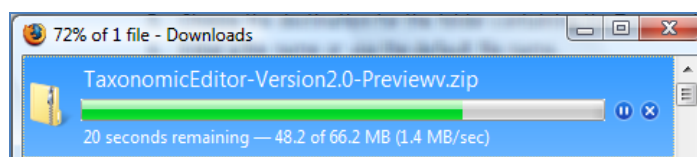
5. Choose a destination for the folder containing the Taxonomic Editor (**Tip!** You may have to click a **Browse Folders** button as shown below in order to access your computer’s directory). Make a note of the destination.
6. Enter a file name or use the default file name. Make a note of the file name.
7. “Save as type” should be **Compressed (Zipped) Folder**.



“Save As” details box: choose a location and name for the folder (choose a new name or keep the default) and Save.

Tip! If you are using Mozilla Firefox and you do not see a pop-up box as shown above, your internet options may not be set up to ask for confirmation on where to save files that you download. The folder will automatically be saved to your desktop. If you wish to change this setting, see the Troubleshooting instructions at the end of this section.

8. Click the **Save** button; a download progress bar will appear. The download may take a few minutes.

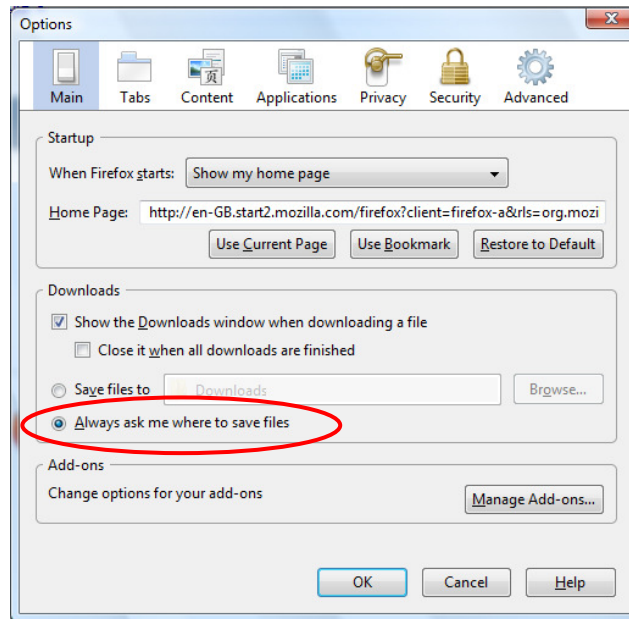


You now have to extract the contents of the compressed folder; the exact method will depend on whether you are using Mozilla Firefox or Internet Explorer (see [Extracting the Contents of the Compressed Folder \(Internet Explorer\)](#) or [Extracting the Contents of the Compressed Folder \(Mozilla Firefox\)](#) below).

Troubleshooting: Mozilla Firefox Settings

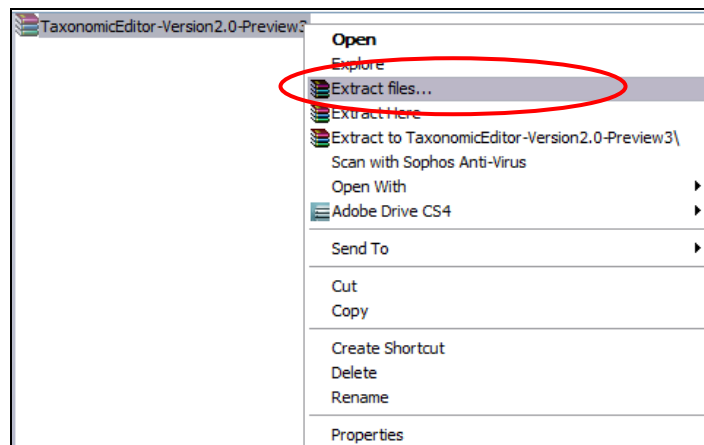
If your internet settings are set up to not ask you for confirmation as to where to save files and folders that you are downloading, they will automatically be saved to your desktop. If you want to change this setting open the **Mozilla Firefox** start page > click on the **Tools** menu on the toolbar at

the top of the screen > click on **Options**. A new pop-up box will open. Click in the box to the right of the text “**Always ask me where to save files**” and click OK:



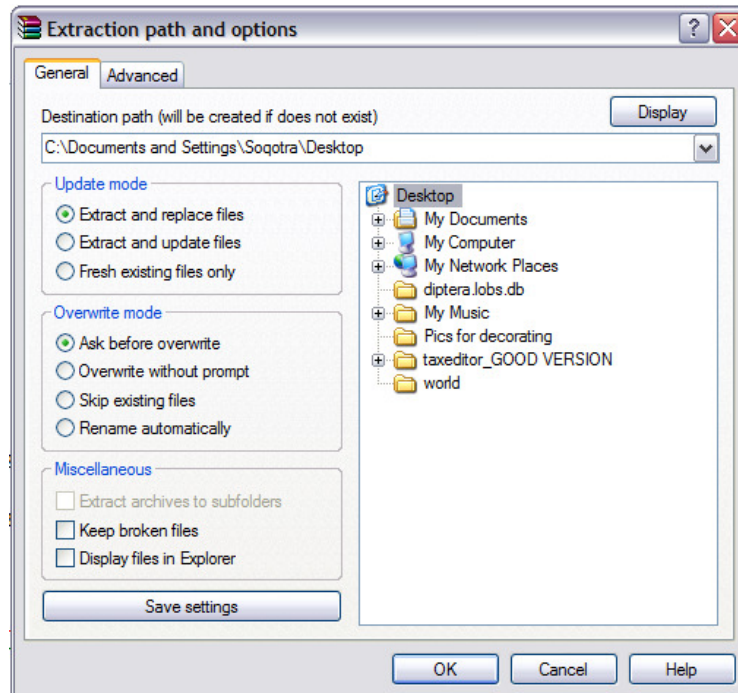
2.2 Extracting the Contents of the Compressed Folder (Internet Explorer)

1. Locate the compressed Taxonomic Editor folder in the destination in which you saved it.
2. Right-click the folder.
3. Click the **Extract Files** option.



A new pop-up box will open for you to choose the destination where the extracted folder will be placed. The default destination will be the location of the compressed folder; if you wish the extracted folder to be in the same place as the compressed folder there is no need to change the destination.

4. Select the destination and click the **OK** button. The folder will be extracted; this may take a few minutes.

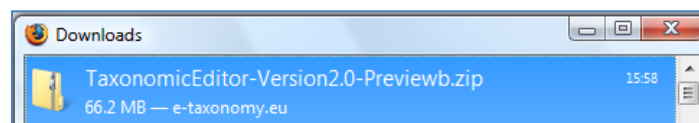


You should now create a Desktop shortcut for the Taxonomic Editor (see [Creating a Desktop Shortcut \(Windows only\)](#) on page 8).

2.3 Extracting the Contents of the Compressed Folder (Mozilla Firefox)

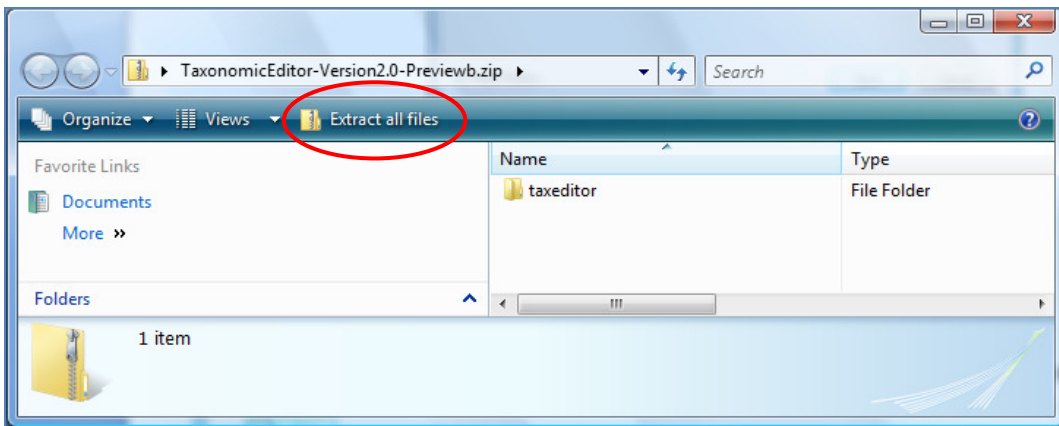
If you have downloaded the Taxonomic Editor using Mozilla Firefox, when the download is complete a pop-up box will open to inform you, as shown below.

1. Open the folder by double-clicking it in the pop-up box:



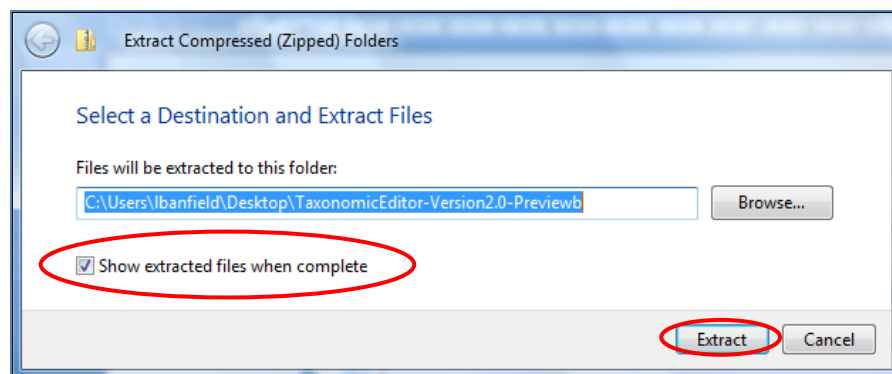
Alternatively, locate the folder in the destination in which you chose to save it, and double-click the .zip folder.

2. Click the **Extract All Files** button:



A new pop-up box will open for you to choose the destination where the extracted folder will be placed. The default destination will be the location of the compressed folder; if you wish the extracted folder to be in the same place as the compressed folder there is no need to change the destination.

3. Select the folder destination using the **Browse** button or leave the default destination.
4. Ensure “Show extracted files when complete” is selected, and click the **Extract** button.



The contents of the compressed folder will be extracted; this may take a few minutes.

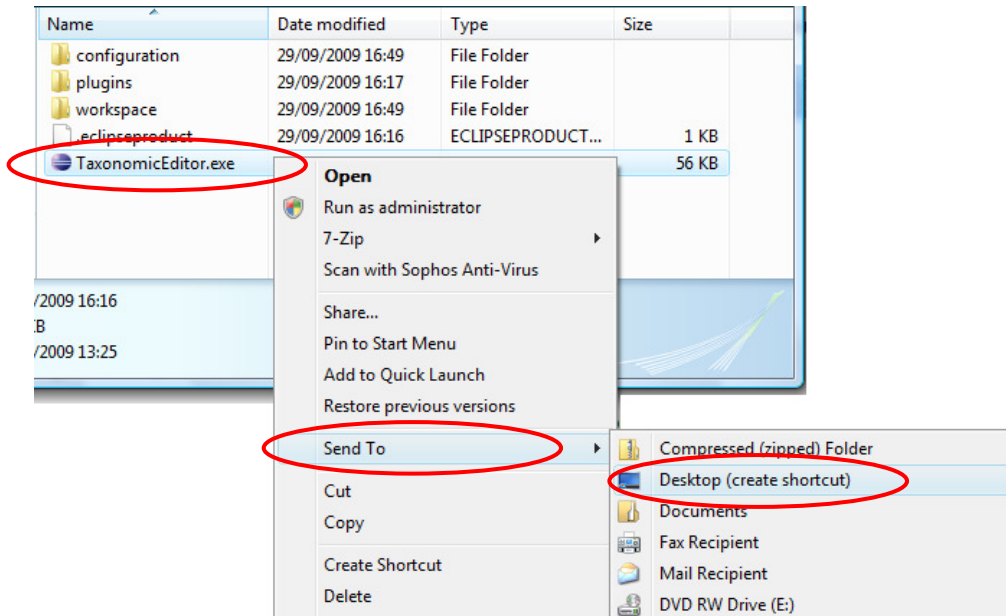
You should now create a desktop shortcut for the Taxonomic Editor (see [Creating a Desktop Shortcut \(Windows only\)](#) on page 8).

2.4 Creating a Desktop Shortcut (Windows only)

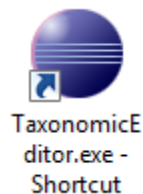
It is recommended that you create a desktop shortcut to the file location of the TaxonomicEditor.exe file as soon as you have downloaded and installed the Taxonomic Editor. You will then be able to open the Taxonomic Editor using the shortcut instead of having to navigate to the .exe file location. These instructions apply only to Windows systems.

1. Locate and open the extracted Taxonomic Editor folder in the destination in which you chose to extract the folder (if you selected the “Show extracted files when complete” option when extracting the folder it will automatically open).
2. Right-click the **TaxonomicEditor.exe** file; a drop-down menu will appear.

3. Click the **Send To** option.
4. Click the **Desktop (create shortcut)** option.



This will create a shortcut on your desktop that will automatically open the Taxonomic Editor:



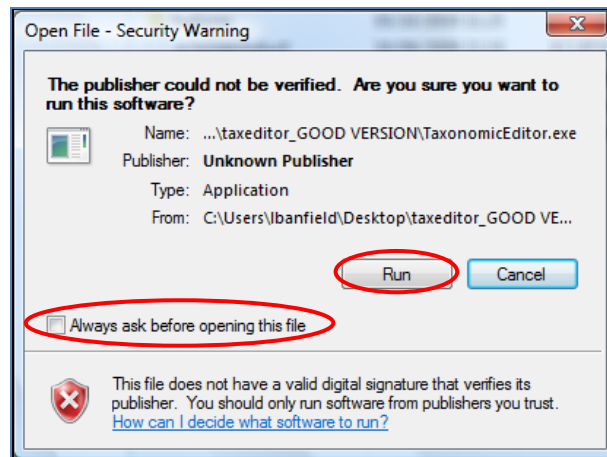
You can double-click this icon to open the Taxonomic Editor.

2.5 Opening the Taxonomic Editor

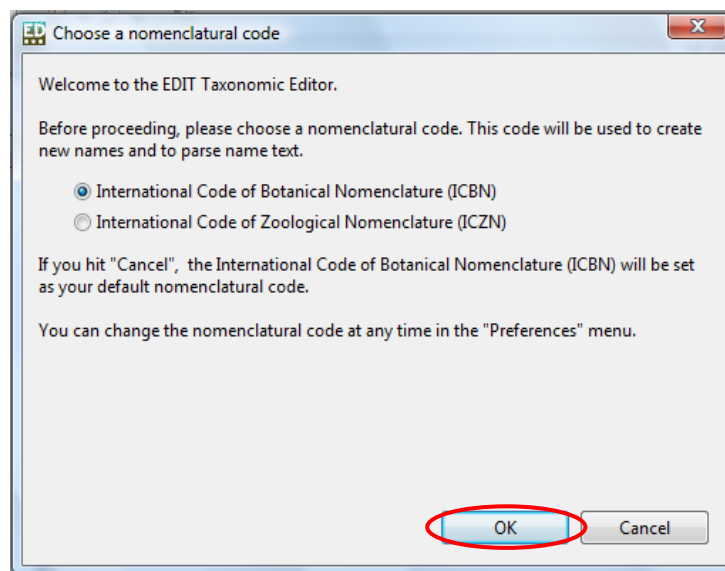
1. Double-click the Taxonomic Editor shortcut on your desktop (if you have not created a shortcut it is recommended that you do so).

A security warning may open; this is a standard Windows security warning asking for confirmation that you trust the source of the application.

2. If you have received a Security Warning pop-up, deselect the option “Always ask before opening this file” – this will prevent this pop-up box from appearing every time you run the Taxonomic Editor.
3. Click the **Run** button to continue opening the Taxonomic Editor.



4. The Taxonomic Editor will load and open; this may take a minute or two the first time you open the Taxonomic Editor.
5. The first time you run the Taxonomic Editor, you will be asked to choose a nomenclatural code. Select the code you wish to use and click the **OK** button.

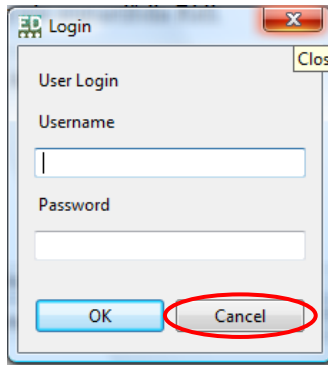


A pop-up box will open confirming your choice of nomenclatural code.

You can change the nomenclatural code at any time in the “Preferences” (see [The Preferences Menu](#) on page 31).

2.6 Logging In

Every time you open the Taxonomic Editor a log-in pop-up box will open. This feature is not yet operational but will be in the next release of the Taxonomic Editor. It will allow changes to be tracked if there will be multiple users of the underlying CDM data store and you need to track changes, each user should log in under their own account. For now, skip the log-in by clicking the **Cancel** button.



2.7 Downloading and Installing Updates

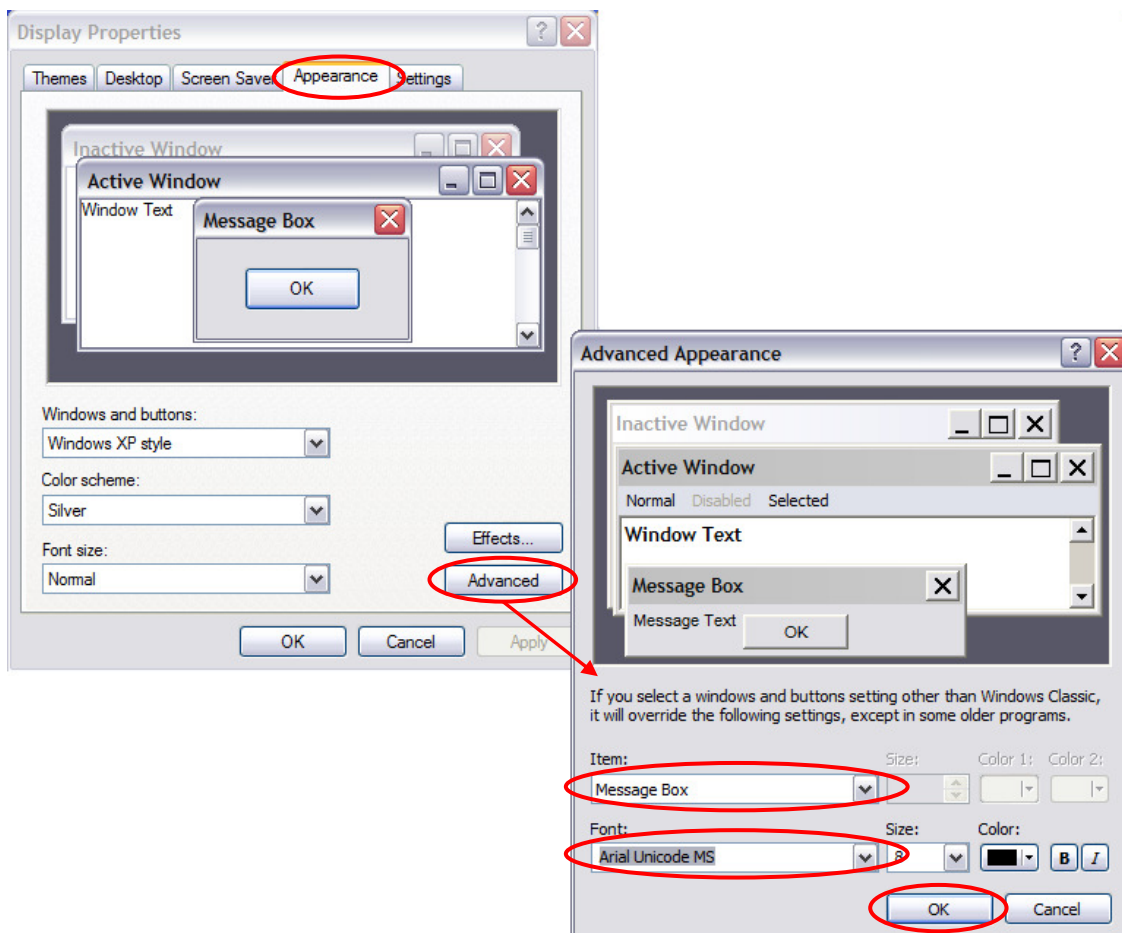
Periodic updates of the Taxonomic Editor may be released. These can be usually be accessed via the Help menu of the Taxonomic Editor, however this feature is not available in this version of the Editor. Therefore to install updates you should remove your current version of the Editor as described in section [Removing the Taxonomic Editor](#) on page 12 and reinstall as described in section [2.1 to 2.6](#) above.

2.8 Enabling Unicode Characters

The Taxonomic Editor uses the operating system's default font to display all the fields that store specimen data. On a Macintosh, the system font is Unicode-compliant, so there is no problem displaying specimen data that includes symbols such as ♀ and ♂. On some, mainly older Windows systems, this is unfortunately not the case. To ensure that all data will be visible on your system, you may need to install a Unicode-compliant font on your Window's system. If you are experiencing this problem it can be resolved quite easily:

- Right-click on your Desktop.
- Click **Properties** in the drop-down menu > Click the **Appearance** tab > Click the **Advanced** option. A new pop-up box will open.
- Click the "Item" drop-down menu and select **Message Box**.
- Click the "Font" drop-down menu and select **Arial Unicode MS**.

The Unicode characters should now appear in the Taxonomic Editor.

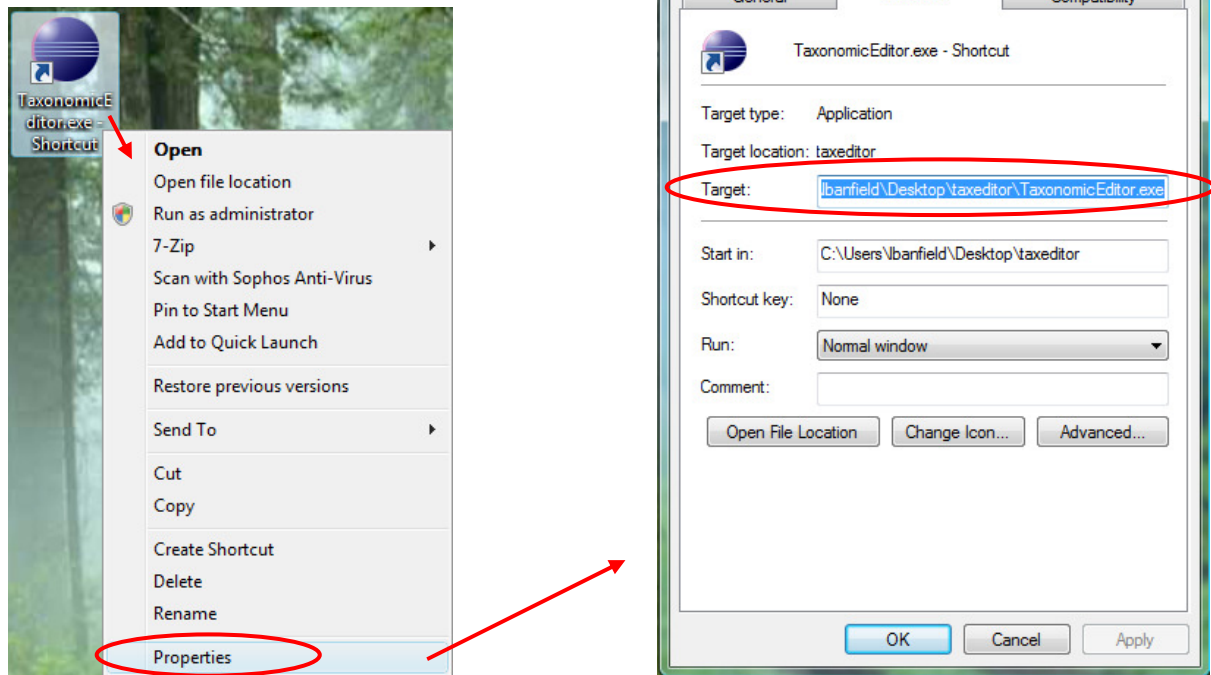


If the Arial Unicode MS font is not shown as an option in the Font drop-down menu, and you are using Microsoft Office 2000 or later, you can obtain the font from your Microsoft Office CD:

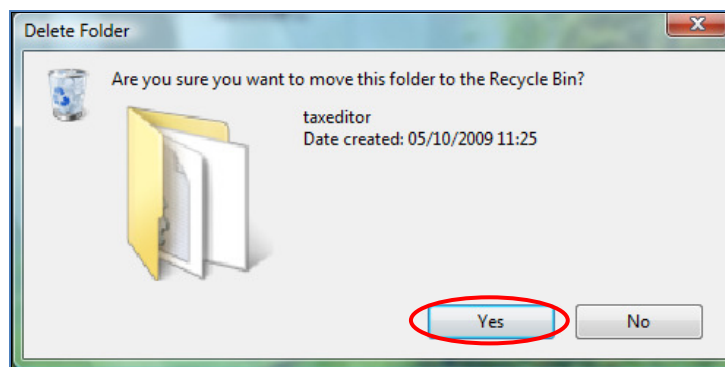
5. Insert the Office CD, and do a **Custom Install**.
6. Choose **Add or Remove Features**.
7. Click the (+) next to Office Tools > **International Support** > the **Universal Font** icon > **Arial Unicode MS font**.
8. Follow the instructions 1-2 above.

2.9 Removing the Taxonomic Editor

To remove the Taxonomic Editor from your system, locate the folder in which the taxonomic editor.exe file is stored on your system and simply delete the folder. If you cannot find the folder and you are on a windows platform and have created a desktop shortcut to the Editor you can determine the path to the folder by looking at the properties of the shortcut. Do this by right clicking on the shortcut and selecting the properties option from the drop down menu. In the Shortcut tab of the properties window look in the 'Target field' this will reveal the location of the taxonomic editor.



Navigate to the Taxonomic Editor folder and delete it by simply clicking once on the folder and pressing the **Delete** button on the keyboard. A pop-up box will appear asking “do you really want to delete this folder”; press **Return** on the keyboard to confirm.



You will also need to delete the **cdm.Library** folder where your local data is stored. The exact location of this folder will depend on your computer system. In order to locate it, run a system search as detailed for different operating systems:

2.9.1 Windows XP and older Systems

1. Click on the **Windows Start** button at the bottom left of your computer screen (on newer systems you may only have an untitled Windows icon).
2. Select the **Search** button; a new pop-up box will appear.
3. Select **Search All Files and Folders**; a new pop-up box will appear.
4. Select the locations on your computer that you would like to search.

5. In the search bar at the left hand side of the box enter “**cdm.Library**”.
6. Click the **Run Search** button.
The search will be carried out and the results will be shown in the main panel of the pop-up box. The search will return a list of matching results. There should only be one folder called “cdm.Library”.
7. Within the panel of the search box, click the cdm.Library folder once.
8. Press **Delete** on the keyboard.
A pop-up box will appear asking “do you really want to delete this folder”.
9. Press **Enter** on the keyboard to confirm.
The cdm.Library folder will be deleted.

If you cannot locate your cdm.Library folder using this method, please see the Microsoft help page for Windows XP at:

<http://support.microsoft.com/kb/308895>

You can now delete the shortcut from your desktop: click on the shortcut, press the delete button on the keyboard; a pop-up will ask you to confirm the deletion; click the OK button.

2.9.2 Windows Vista

1. Click on the **Windows Start** button at the bottom left of your computer screen. The Start menu will open.
2. Click in the **search bar** at the bottom of the menu.
3. Enter “**cdm.Library**”:



A menu of matching search results will open.

4. Click the **Search Everywhere** option at the bottom of the search results menu.
A “Search results in indexed locations” window will open. At the left hand side is a list of locations with matching folder names. One of these will be your user location on your PC.
5. Click the arrow icon at the left of your user directory to expand the menu. The cdm.Library folder will be found in the menu.
Click the cdm.Library folder once and press the Delete button on the keyboard. A pop-up box will appear asking “do you really want to delete this folder”.
6. Press **Enter** on the keyboard to confirm.
The cdm.Library folder will be deleted.

If you cannot locate your cdm.Library folder using this method, please see the Microsoft help page for Windows Vista at:

<http://windowshelp.microsoft.com/Windows/en-GB/help/ed53ade7-cfb8-425a-841d-6a6aa6991dfe1033.msp>

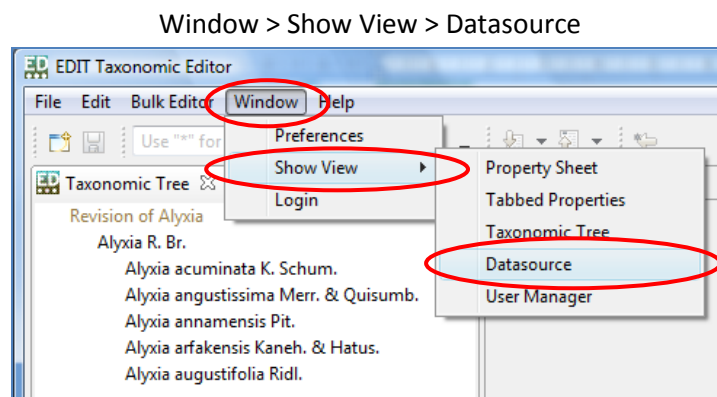
You can now delete the shortcut from your desktop: click on the shortcut, press the delete button on the keyboard; a pop-up will ask you to confirm the deletion; click the OK button.

2.10 Creating Multiple Datasources

Multiple Datasources can be used to create separate databases or datasets within the Taxonomic Editor. You may want to create a separate datasource for different users or for different taxonomic treatments, allowing you to keep the information separate.

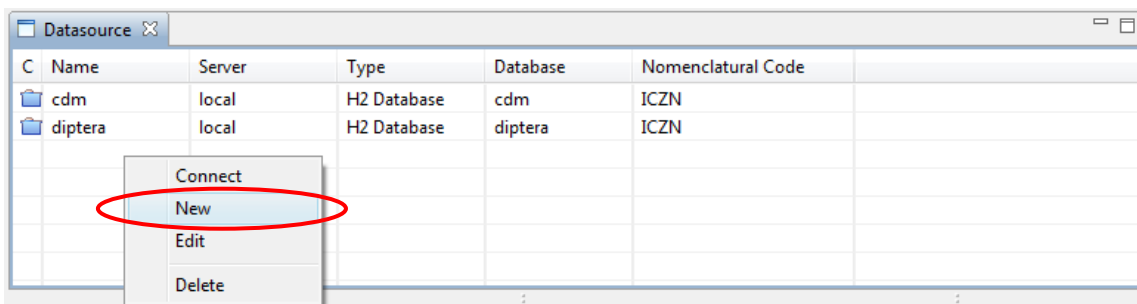
With the Taxonomic Editor installed and open on the machine:

1. Ensure that the **Datasource** panel is shown:



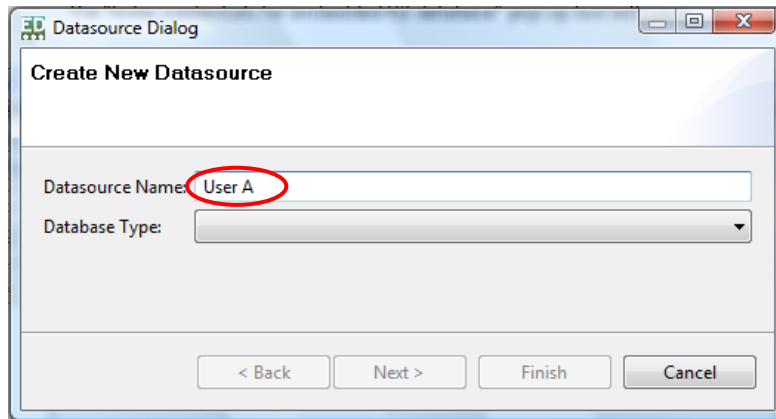
The Datasource panel will open at the bottom of the Taxonomic Editor window.

2. Press the right-click of the mouse with the cursor pointing within the Datasource panel; a drop-down menu will appear.
3. Click **New**:

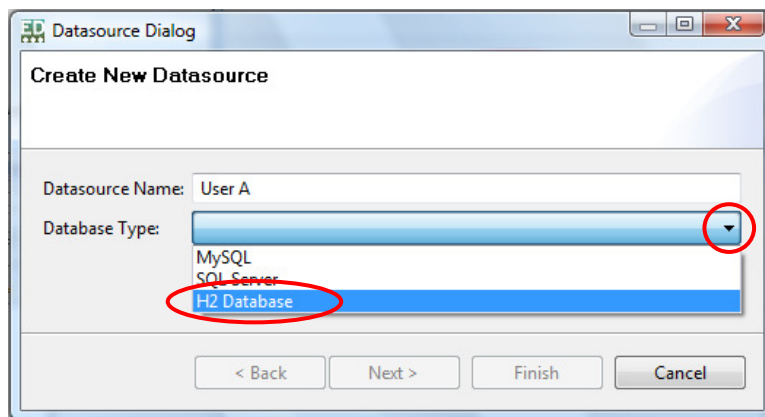


The “**Create New Datasource**” panel will appear.

4. Enter a name for the Datasource in the Datasource Name field:

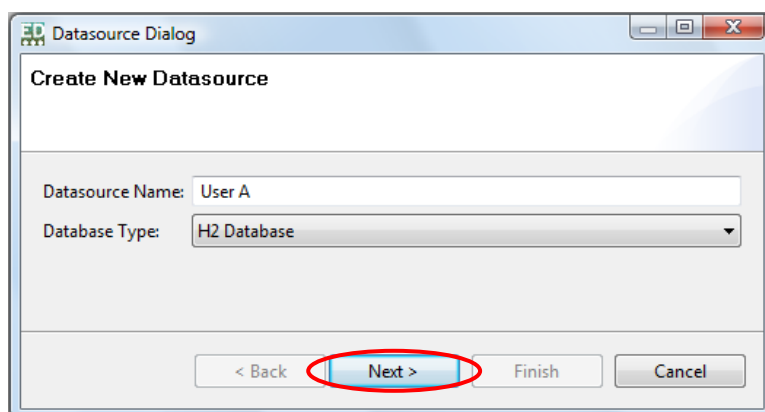


5. Click the arrow icon to the right of the **Database Type** field; a drop-down menu will appear.
6. Click the “**H2 Database**” option.



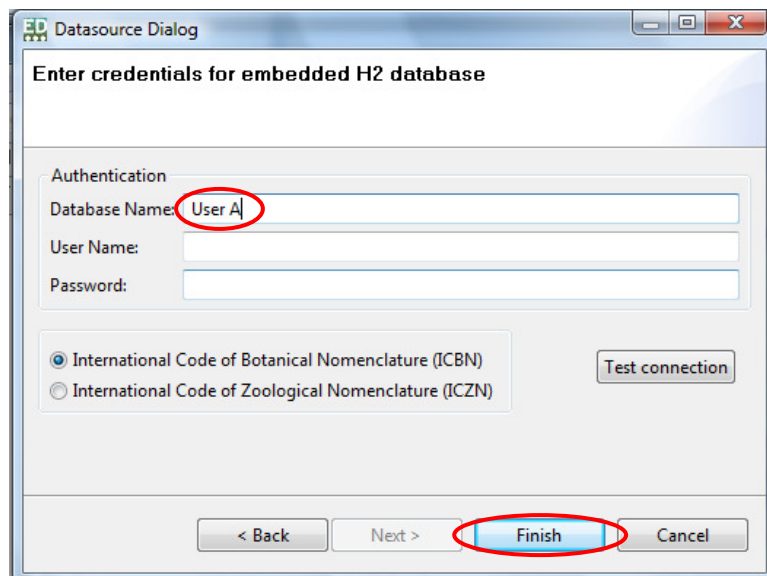
The drop-down menu will close.

7. Click **Next**.



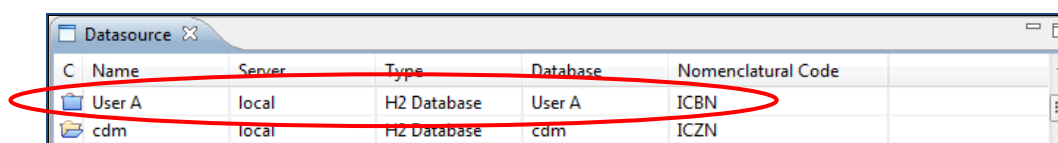
The “**Enter credentials for embedded H2 database**” pop-up box will open.

8. Enter a Database name (for example the name of a user or a taxonomic group).
9. Select **ICBN** or **ICZN** as appropriate.
10. Click **Finish**.



Please Note: There is no need to input a user name or password. Although you can create a user name and password if you wish, the enforcement of this function is not yet operational, therefore a user will be able to edit any datasource without using the username and password.

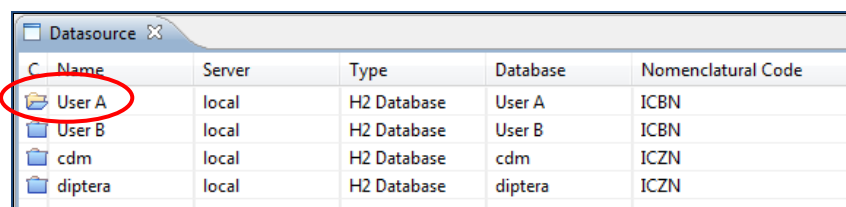
The new Datasource will appear in the Datasource panel:



The process to create new datasources can be repeated as many times as desired.

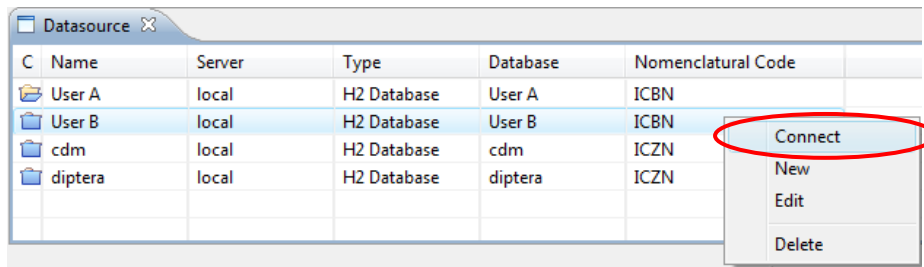
2.11 Connecting to a Different Datasource

The open Datasource is indicated by an open folder icon in the Datasource panel:

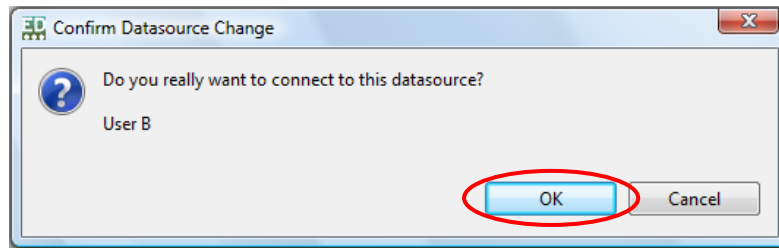


To open a different Datasource for each tester:

1. Click the right mouse button with the cursor pointing to the Datasource you wish to select.
2. Click **Connect**.



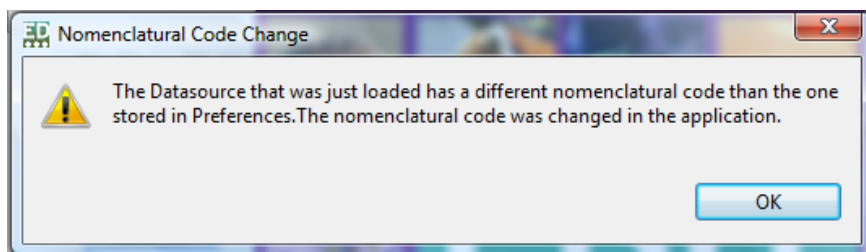
The “Confirm Datasource Change” pop-up box will open.



3. Click **OK**.

The Taxonomic Editor will restart with the selected Datasource open.

If you are opening a Datasource with a Nomenclatural Code that is different to the preferred Nomenclatural Code that you selected when installing the Taxonomic Editor, you will receive a warning:



4. Click **OK**; the warning will close and the Nomenclatural Code will be changed to match that of the Datasource.

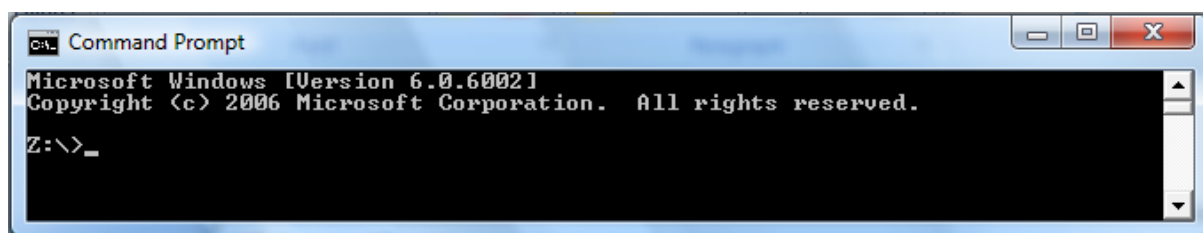
3.0 Getting Started: Troubleshooting

3.1 Checking your version of Java Runtime Environment

If the Taxonomic Editor does not install successfully on your machine, it may be because you do not have the latest version of Java Runtime Environment; the Editor will not work with any versions previous to version 1.6 (released in December 2006). You can check what version of Java RE you have on your machine in the following way:

Click the **Start** button on your PC > **All Programs** > **Accessories** > **Command Prompt**

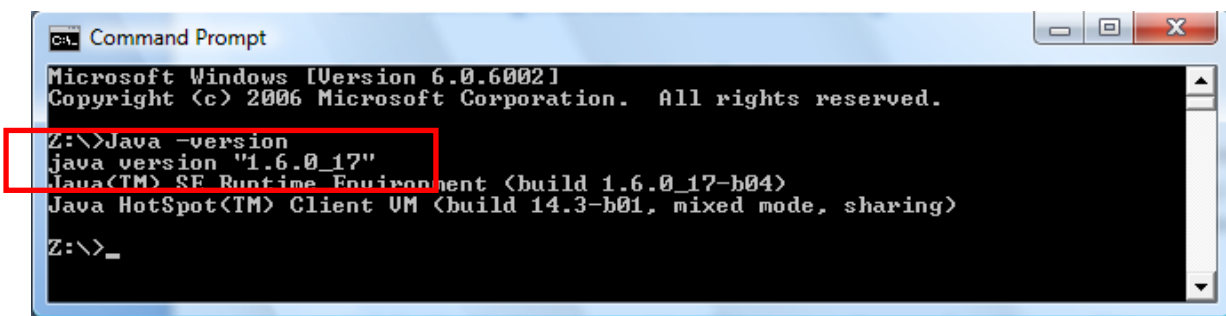
A window will appear:



Type in the following command exactly as it is written (with a space following "Java" and a dash before "version"):

Java -version

Press **Enter**. Information about your currently installed version of Java will appear, as shown in the example below:

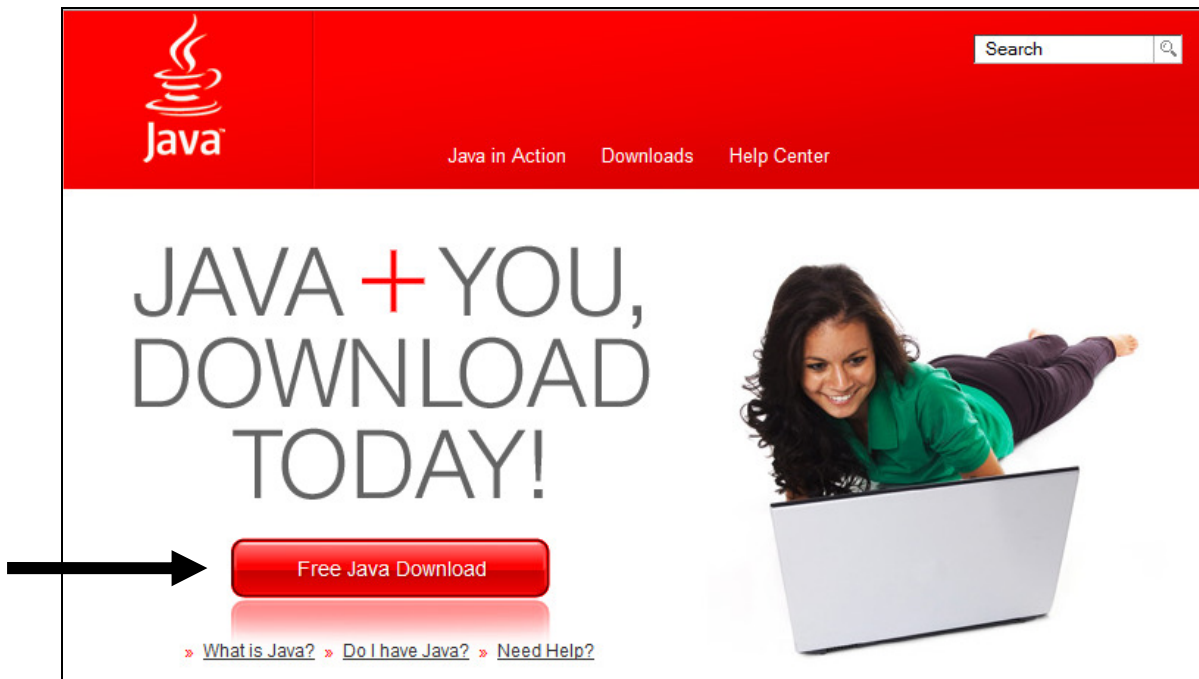


The example shows that this computer has Java Runtime Environment 1.6.0_17 installed.

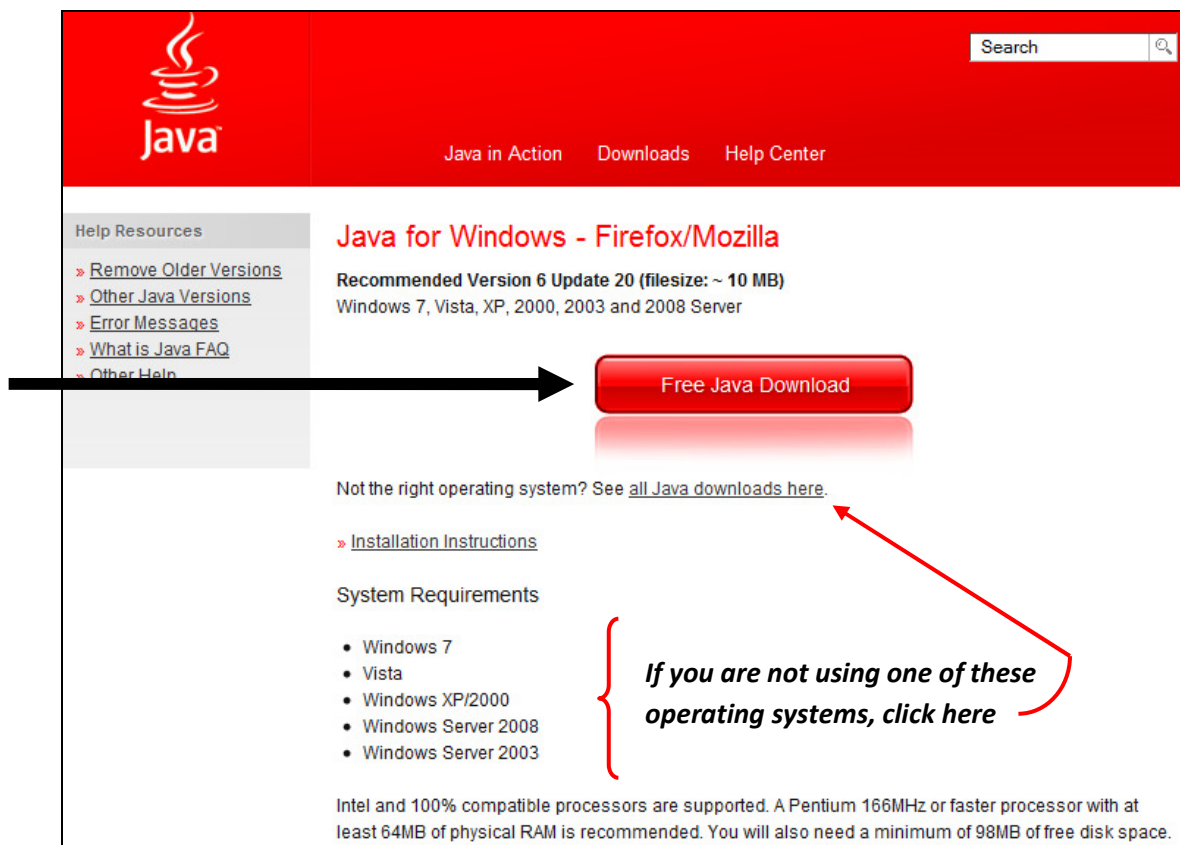
3.2 Updating your version of Java Runtime Environment

If you have a version of Java Runtime Environment earlier than 1.6.0, you will need to download and install the latest version; please note that this is free. You can do this in the following way:

In the search bar of your chosen search engine, input the following: www.java.com and press return. The Java website will open. On the home page there will be a button to click for “Free Java Download” (please note: the website was accessed in April 2010 and the appearance may change).



Click the “Free Java Download” button; the following screen will open: Note that the version available for download is Version 6 update 20 (1.6.0_20).



Please note the system requirements listed for which the version downloaded from this page is suitable. If your operating system is not listed, you can click the “See all Java downloads here” link and choose the appropriate version from the list presented.

After clicking the download button, you will need to save the Java installer, which at the time of writing is called “jxpiinstall” (if you do not know where the installer has been saved, you can locate it by entering the name in your search bar). Locate and double-click the installer and follow the instructions given to install Java Runtime Environment.

4.0 Getting to Know the Taxonomic Editor

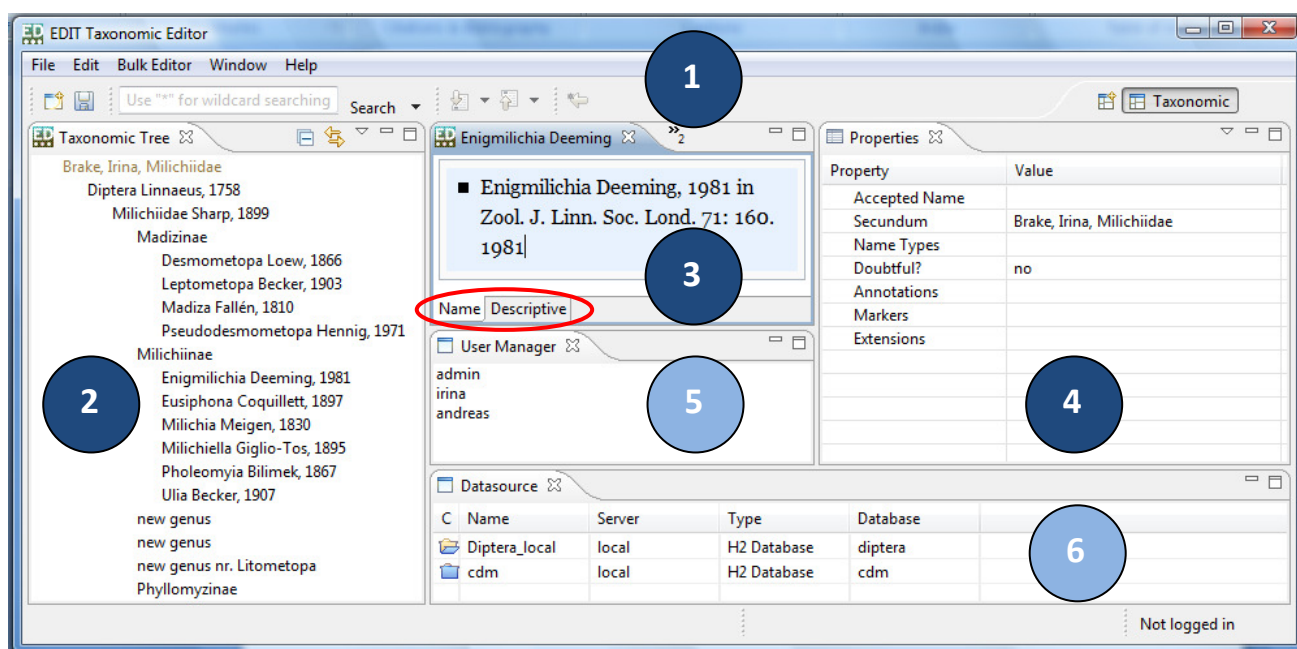
This section will teach you about:

- The different parts or panels of the Taxonomic Editor.
- The menus; their contents and functions.
- Standard commands and functions.

4.1 Parts of the Taxonomic Editor

This section gives a brief overview of the main sections of the Taxonomic Editor and some of the terminology you will need to be familiar with.

The Taxonomic Editor has 4 main parts: (1) the **Toolbar**, (2) the **Taxonomic Tree** panel, (3) the **Freetext** panel, and (4) the **Properties Sheet**. Additional panels showing (5) the **User Manager** and (6) the **Datasource** are also available.

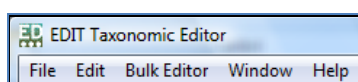


- (1) The **Toolbar** contains a search bar to search within your data set and the Menus (see [3.2 The Menus](#) below for a list of menus available and their functions).
- (2) The **Taxonomic Tree** panel provides a taxonomic, hierarchical representation of the relationships between the taxa within your dataset.
- (3) The **Freetext** panel is the main data entry area. There are 2 tabbed panels in this area: Name and Descriptive. Only one panel is visible at a time; you can navigate between them using the tabs at the bottom of the Freetext panel. The **Descriptive tab** shows descriptive data for the open taxon, such as distribution information. The **Names tab** shows the nomenclatural information

for the open taxon. If you are using the **Bulk Editor** facility, the bulk editor panel will open in place of the Freetext panel. The Freetext panel is described in more detail in [The Freetext Panel](#) on page 26.

- (4) The **Properties Sheet** panel displays the record details of the taxon that is open and selected in the **Freetext** panel. Data can be edited directly in this panel.
- (5) The **User Manager** panel will be used to view, edit, create or delete user accounts in order to track changes to your data, for example “Created By” and “Updated By”; it is not yet operational.
- (6) The **Datasource** panel shows which datasource, or database, the Taxonomic Editor is currently connected to. You can connect or delete connections to different datasources or create a new datasource.

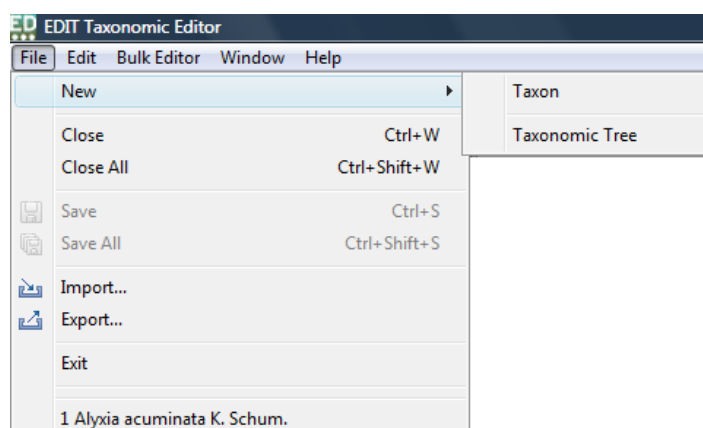
4.2 The Menus



File

The File menu has the following options:

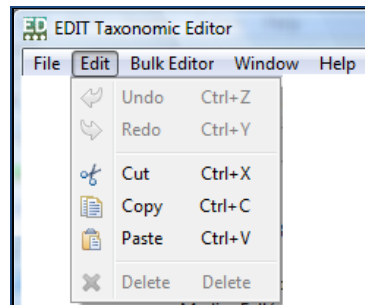
- > **New**; for creating a new **Taxon** or **Taxonomic Tree**
- > **Close**; > **Close All**; > **Save**; > **Save All**; these functions operate on the taxon or taxa records that are open in the Freetext panel.
- > **Import**; for importing data for an existing database or file.
- > **Export**; for exporting data to a database or file.
- > **Exit**; for closing the Taxonomic Editor.
- > Recently opened records are listed at the bottom of the menu. Click on a taxon name in this list to open the taxon in the Freetext panel.



Edit

- > **Undo**; > **Redo**; these commands are currently operational only when using the Bulk Editor (see below).

> **Cut**; > **Copy**; > **Paste**; > **Delete**; these commands apply to all panels of the Taxonomic Editor apart from the Taxonomic Tree panel where only the Delete function works.

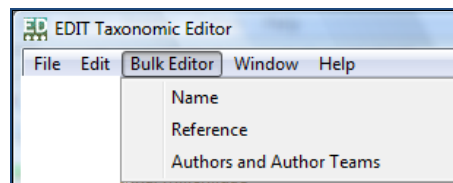


Bulk Editor

The Bulk Editor is used to edit lists of:

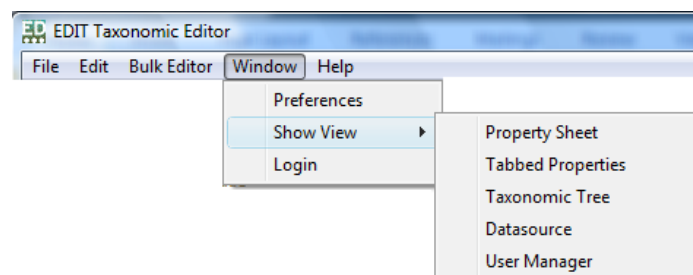
- > **Names**
- > **References**
- > **Authors and Author Teams**

See **Bulk Editing** on page 60 for further details.



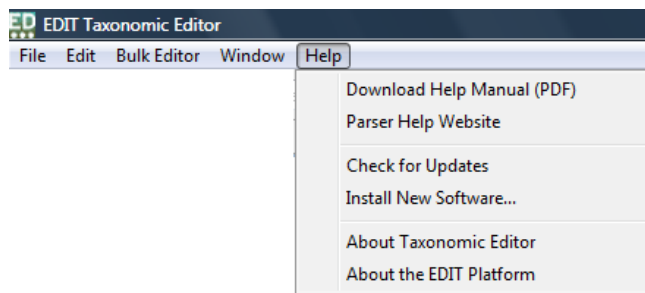
Window

- > **Preferences**; for managing preferences (see **Customising the Taxonomic Editor** on page 31).
- > **Show View**; to open panels that have previously been closed (again, see **Customising the Taxonomic Editor** on page 31).
- > **Login**; to open the User login pop-up box. This feature is not yet functional.



Help

- > **Download Help Manual (PDF)**; to download the latest version of the User Manual.
- > **Parser Help Website**; to access documentation about the parser.
- > **Check for Updates**; to access any available updates from the EDIT WP5 website.
- > **Install New Software**; to install available software.
- > **About Taxonomic Editor**; to access feature, plug-in and configuration details.
- > **About the EDIT Platform**; to access information about the EDIT Cyberplatform.



4.3 General Behaviours and Navigation

4.3.1 Mouse and Keyboard Functions

In all sections of the Editor except the toolbar clicking the **right mouse button** will open up a context menu containing a list of possible commands that can be performed on the data element the mouse is pointing at. When no commands are available right-click will have no effect.

Most of the commands written in the manual are based on the user using the mouse. However, it is also possible to use the keyboard for some functions. Notably, when pop-up boxes require confirmation by selecting 'OK' or 'Finish', the default setting will be on the OK/Finish button, therefore you can select OK/Finish by pressing Return on the keyboard as well as clicking the button with the mouse.

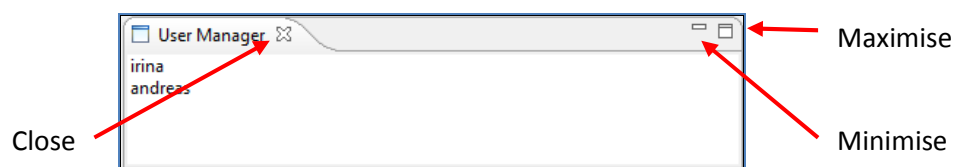
Keyboard arrows can be used to navigate around the Toolbar area to find menus and make selections. You must first click on one of the menus using the mouse, but can then use the arrows on the keyboard to navigate and the Return/Enter key to make your selection.

4.3.2 Changing Panel Sizes

Each individual panel on the Taxonomic Editor can be resized using the mouse; as you point the mouse arrow on the join between two panels a double-headed arrow will appear. Simply press and hold the left mouse button and move the mouse until the panel is in the desired position and release the left mouse button. The entire Taxonomic Editor can also be resized in this way. It also has the standard minimise, maximise and exit buttons at the top right of the window.

4.3.3 Opening and Closing Panels

Each individual panel can be minimised/maximised using the icons at the top right of the panel, or closed using the 'X' icon on the tab bearing the name of each panel:



The panels can be reopened using the Show View menu (see [The Show View Menu](#) on page 37).

4.3.4 Navigating between Panels

To change the active panel of the Taxonomic Editor you must navigate between them using the mouse; clicking in a panel will activate it.

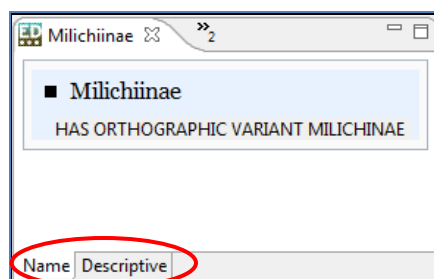
4.4 The Freetext Panel

This section describes how to work within the **Freetext** panel. The Freetext panel has two elements; the **Names** tab and the **Descriptive** tab.

The **Freetext > Name** tab is where the nomenclatural information such as accepted name, authority and nomenclatural reference as well as synonym information is displayed and updated.

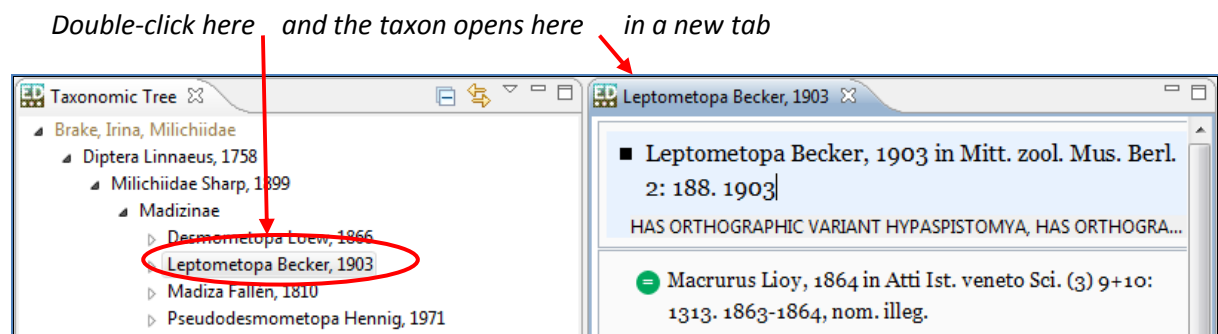
The **Freetext > Descriptive** tab is where additional descriptive data such as distribution, common names, conservation status, ecology etc is input, edited and displayed. See [Adding Descriptive Data to Taxon](#) on page 72 for more details.

You can open either the Name or Descriptive tabs by clicking on the tabs at the bottom of the **Freetext** panel:



4.4.1 Activating Taxon Records in the Freetext Panel

Any taxon listed in the **Taxonomic Tree** panel can be opened in the **Freetext** panel by double-clicking it in the **Taxonomic Tree** panel. This is the equivalent of opening a word processing file within the database. The taxon record will be opened in the **Freetext** panel headed by a tab titled with the taxon name:



Please Note: when a taxon record is first activated in the Freetext panel the default display will be the Names tab.

4.4.2 Searching for a Taxon Record

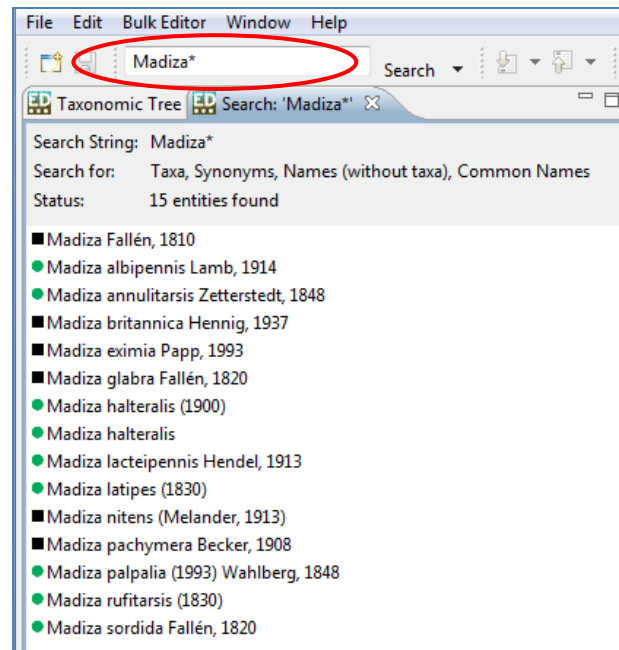
If you want to open a taxon record in the **Freetext** panel but you do not know its location in the Taxonomic Tree, you can search for the taxon using the **search bar** at the top of the **Taxonomic Editor** window

1. Click in the search bar.
2. Enter a search term – this can be the full taxon name or you can use the wildcard asterisk (e.g. Des*, *halteralis, *halt* could all be used to search for *Desmometopa halteralis*). Please note the search is case sensitive so you must use a capital letter where appropriate.
3. Press **Return** on the keyboard.

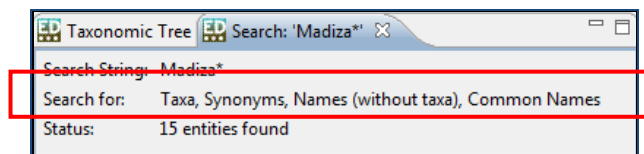
The search results will appear in a new tab in the Taxonomic Tree panel as shown below. Taxon records with a black square icon can be double-clicked to open their records in the **Freetext** panel. Those with green circles are synonym records; those which apply to more than one accepted taxon record cannot yet be opened by double-clicking in the search results in this way. This problem will be addressed in later versions of the Editor.

Accepted Names: Can be selected – double-click and the taxon will be activated in the **Fretext > Name panel**

Synonyms: Those which apply to more than one accepted name cannot be selected as above

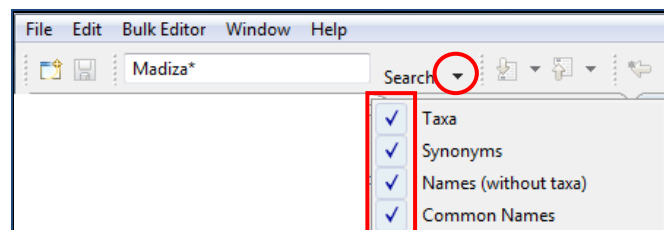


Also in the search results are the types of taxa that you have included in your search. For example, the search above included Taxa, Synonyms, Names (without taxa) and Common Names:

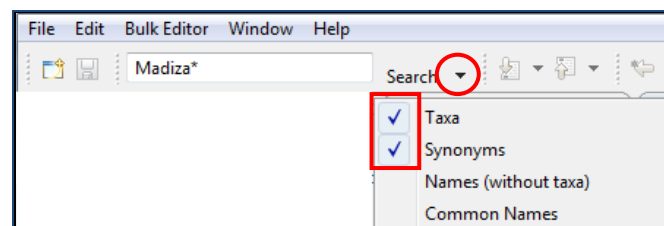


Should you want to limit the search results to one or a sub-set of these options, you can do so by selecting and/or deselecting your search criteria using the drop-down menu to the right of the Search bar. Simply click the arrow icon to reveal the drop-down menu, and click on the available criteria. If the criterion is included in searches there will be a tick icon to its left.

All criteria will be included in searches



Only (accepted) Taxa and Synonyms will be included in searches

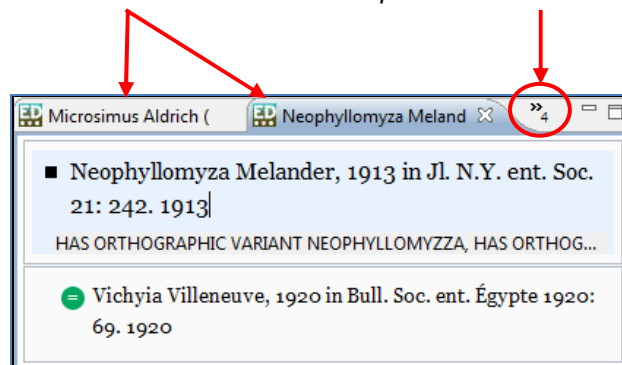


Tip! If your search results do not show any taxa but you know there should be matches within your dataset, make sure that the search criteria are selected. If they are ALL deselected your searches will be unsuccessful.

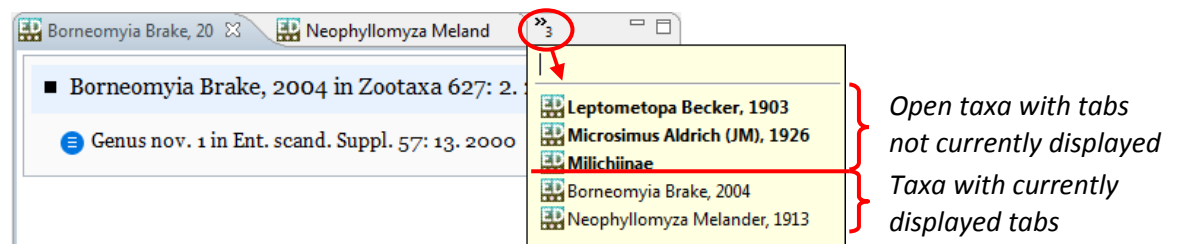
4.4.3 Navigating between Taxon Records

It is possible to open multiple taxon records so that there are several documents open in the **Freetext** panel. Each taxon will be opened as a new document; each document can be accessed by clicking on the appropriate tab at the top of the free text panel. A double-arrow icon will displayed at the top right of the panel when there are more taxa open than are currently visible; the number refers to the number of open taxon records.

The tabs of 2 taxon records are visible and there are 4 open taxon records that are not currently displayed



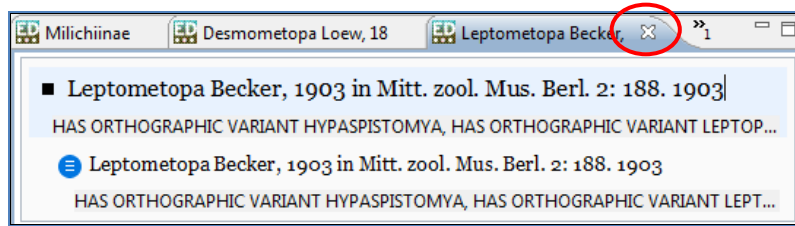
In order to view more tabs of taxon records you can expand the width of the **Freetext** panel using the arrows that appear at the sides of the panel when you hover the mouse arrow over them (see **Panel Sizes** on page 25). Also, clicking on the double-arrow icon will reveal a list of all the open taxon records; those in **bold** are those for which the tabs are not current displayed:



You can click on any of the taxon records in the drop-down list to activate that record in the **Freetext** panel.

4.4.4 Closing Taxon Records

You can close the activated taxon record by clicking on the Exit icon at the right of the tab:

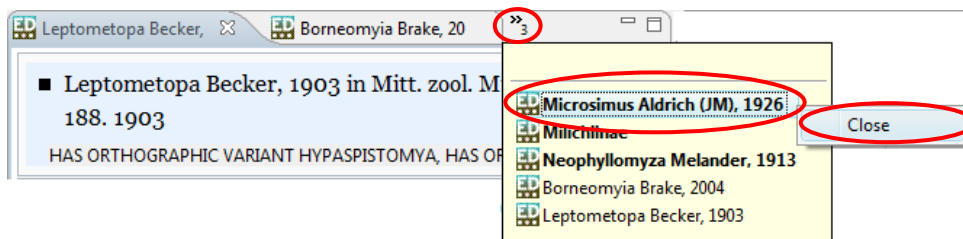


If you want to close a taxon record for which the tab for the record is visible, click on the tab to activate the record and click the Exit icon as shown above.

When you have multiple taxon records open, you can close a taxon record that is not being displayed without first having to navigate to it:

1. Point the mouse arrow at the double-arrow icon at the top of the **Freetext** panel; a drop-down menu will appear.
2. Point the mouse arrow at the taxon in the drop-down list that you want to close.
3. Click the mouse so the taxon is highlighted.
4. Click the right-mouse button; the Close menu will appear.
5. Click **Close**.

The taxon record will close and the taxon name will disappear from the list.

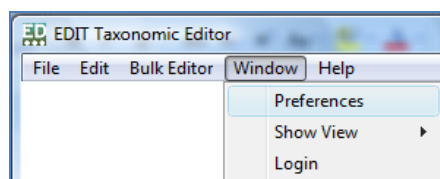


5.0 Customising the Taxonomic Editor

This section tells you how to customise the Taxonomic Editor to suit your own needs. You can:

- Pick and choose which options will appear in drop-down boxes.
- Create new options/data fields for several parts of the database such as taxon descriptions.
- Choose which panels of the Taxonomic Editor are displayed.

5.1 The Preferences Menu



Toolbar > Window > Preferences

5.1.1 Show/Hide Options of Drop-Down Menus

Some taxonomic and descriptive elements of the Properties Sheet have numerous options, as is the nature of taxonomy, for example there are 19 options to describe the Distribution Status of a taxon. You may find that you only need to use a sub-set of these options.

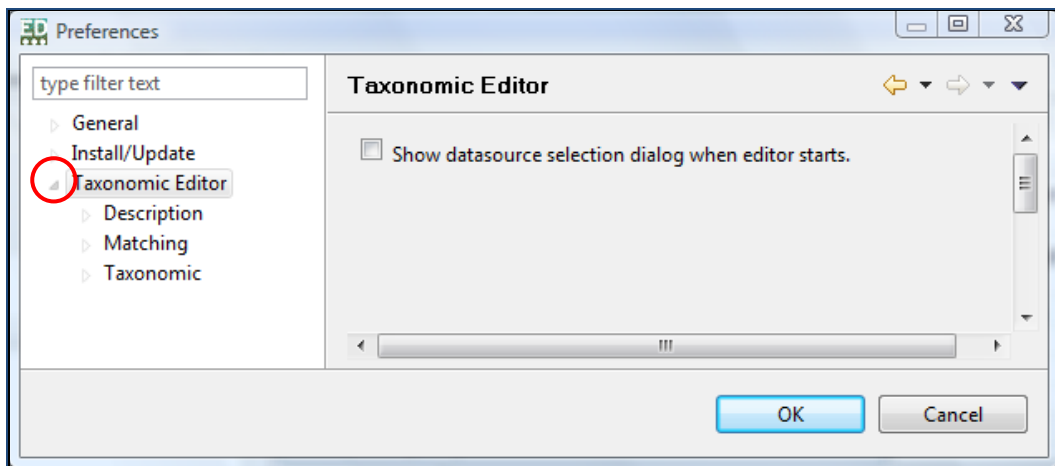
From the **Preferences** menu you can show or hide the options in certain drop-down boxes; this will reduce navigation time required to find your desired option.

Options can be amended for the following fields:

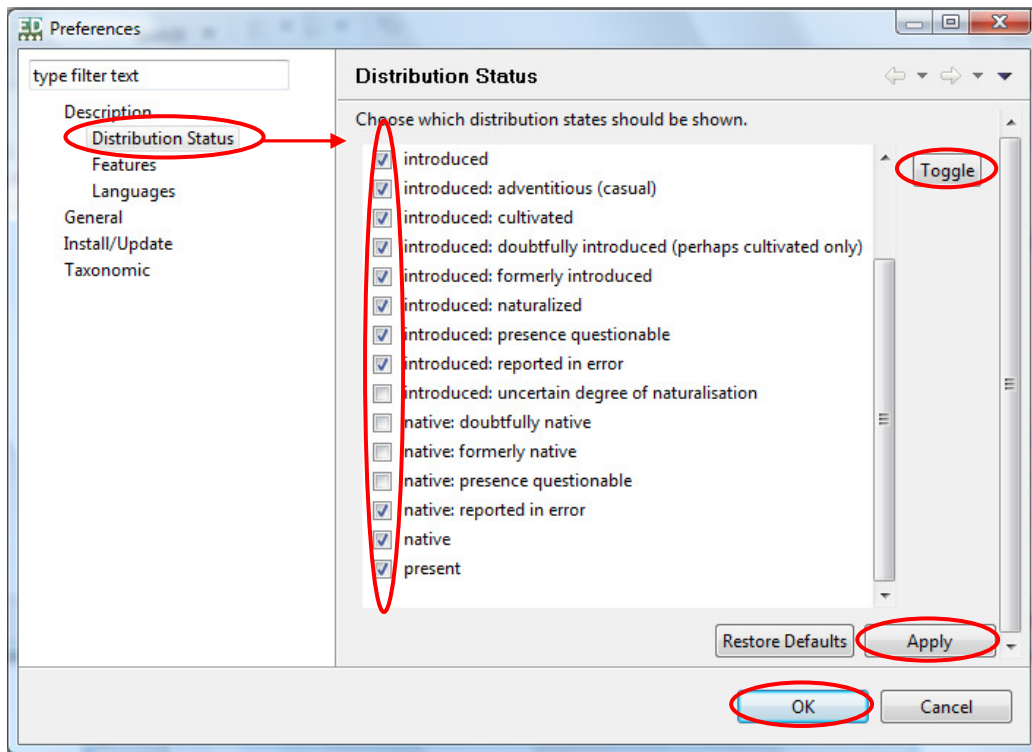
- > **Description**
 - > **Distribution Status**; for example “introduced: cultivated”, “introduced: naturalised”.
 - > **Features**; the features you would like to include in your taxon descriptions, for example “common name”, “distribution” and “ecology”.
 - > **Languages**
- > **Taxonomic**
 - > **Extension Types**
 - > **Marker Types**
 - > **Name Relationships**; for example “misspelling for”, “basonym for”.
 - > **Nomenclatural Code**; ICBN or ICZN.
 - > **Nomenclatural Status Type**; for example “invalid”, “conserved”.
 - > **Ranks**; for example “cultivar”, “tribe”.
 - > **Specimen Type Designation Status**; for example “epitype”, “holotype”.
 - > **Taxon Relationship Type**; for example “overlaps”, “excludes”.

To amend the options that are shown in the drop-down boxes in the above data fields, open the **Preferences** pop-up box (**Toolbar > Window menu > Preferences** option). The Preferences pop-up will open.

1. The **Description** and **Taxonomic** menus given above are located in the Taxonomic Editor option in the menu. They can be accessed by expanding the Taxonomic Editor menu by clicking on the arrow icon:



2. Click on the data field you would like to change from the menu on the left hand side of the pop-up.
The existing options associated with the drop-down list for that data field will appear in the main panel of the Preferences pop-up box. By default, all of the options will be selected. Use the scroll bar to the right of the options list to navigate the list.
3. Ensure that all of the options you wish to appear in the drop-down box for that data field are ticked, and all those you do not wish to appear are un-ticked. You will need to use the mouse to do this.
You can use the **Toggle** button on the right-hand side of the box to select or deselect all of the options in the list.
4. Click the **Apply** button > click the **OK** button to finish. The Preferences pop-up box will close and you will be returned to Taxonomic Editor.



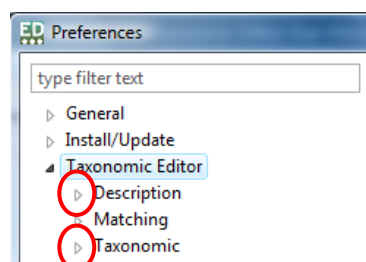
5.1.2 Adding New Options to Drop-Down Menus

For some data fields in a Taxonomic Database there are so many possible options that it is impractical to add all of them by default. Therefore there may be occasions where you wish to be able to apply a value to a data field but do not have an option to do so within the drop-down list for that data field, or there is no data field to accommodate the information you wish to enter.

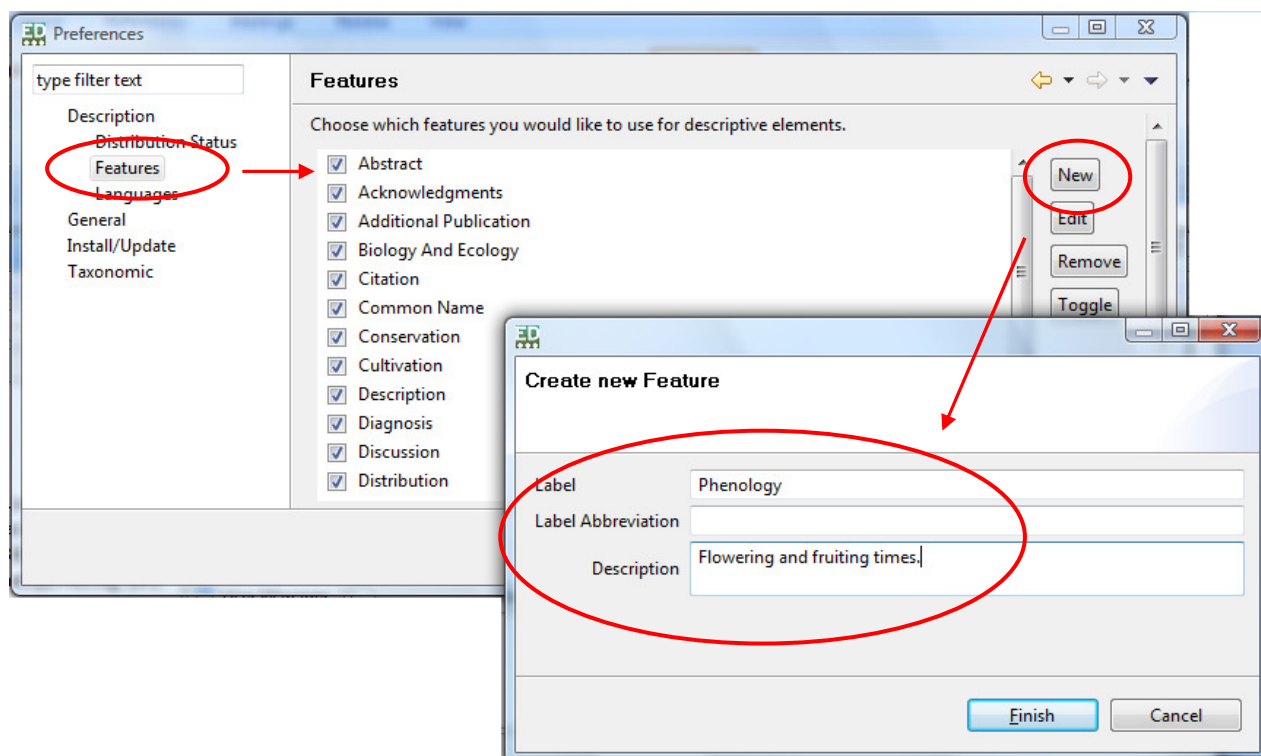
To allow for this, some fields allow for new options to be added:

- > **Description** > **Features**; the features you would like to include in your taxon descriptions, for example “common name”, “distribution” and “ecology”.
You can add a new data *field* to the Descriptive panel found in the Freetext panel.
- > **Taxonomic** > **Extension Types** You can add a new data *option* to the Extension Type field drop-down box found in the Properties Sheet.

1. Open the **Preferences** pop-up box (**Toolbar** > **Window** menu > **Preferences** option).
2. Navigate to the element you wish to change by expanding the **Description** or **Taxonomic** menus found in the Taxonomic Editor menu:



3. Click on the data field you would like to add to from the menu on the left hand side of the pop-up. The existing options associated with the drop-down list for that data field will appear in the main panel of the pop-up box. The example shown below is adding a new feature or data field to the overall Description.
4. Click the **New** button.
5. Give the new data field a Label, an abbreviation if desired and a description if desired. Only the data label is mandatory.
6. Click the **Finish** button.



Your new data option will be added to the drop-down box for the selected data field in the Properties Sheet.

Please Note: The **Remove** option is not yet functional in this version of the Editor.

5.1.3 Editing Options of Drop-Down Menus

The Taxonomic Editor gives you the option to edit existing options of some drop-down boxes, as well as selecting/deselecting and the creation of new options as described in the above sections. Editing options allows you to change the name of the feature, abbreviation, and to add a description. This may be useful if your datasets has several users and you wish to provide information so that the data fields are used in a standardised way.

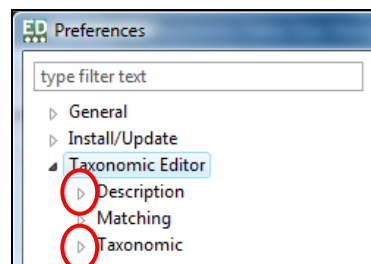
Options found in the following menus can be edited:

Preferences > Description > Features for example “common name”, “distribution” and “ecology”.

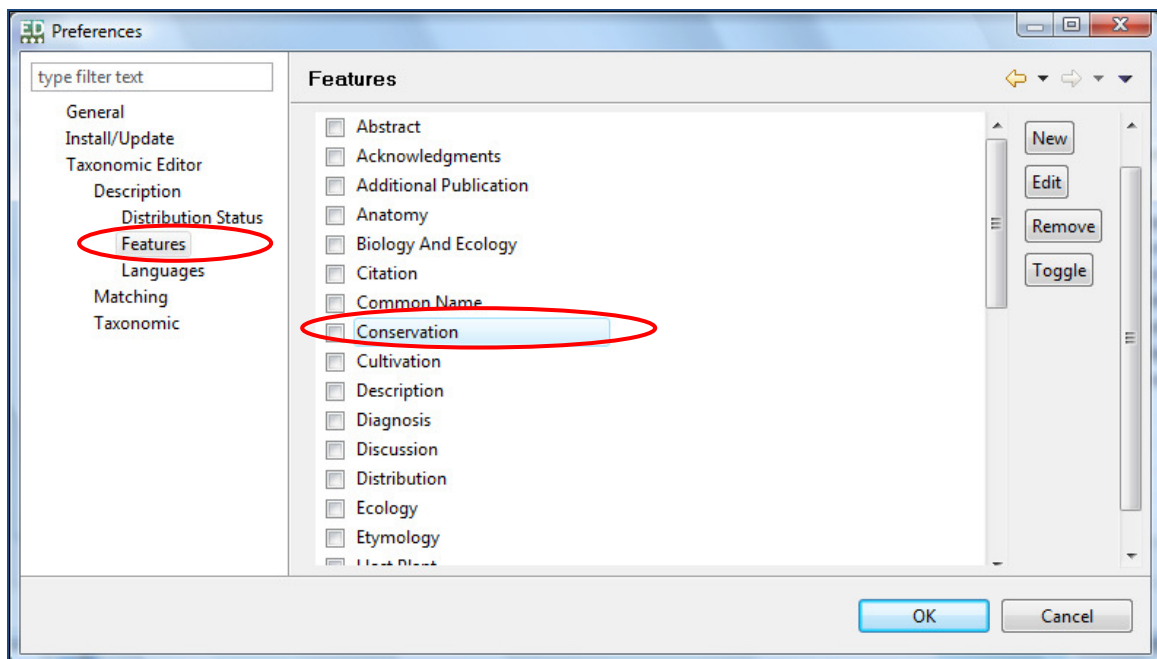
Preferences > Taxonomic > Extension Types

An example of how to edit a Feature of the **Description** menu is given below. For more information on the Descriptive element of the Taxonomic Editor see section **9.0 Adding Descriptive Data to Taxon** on page 72.

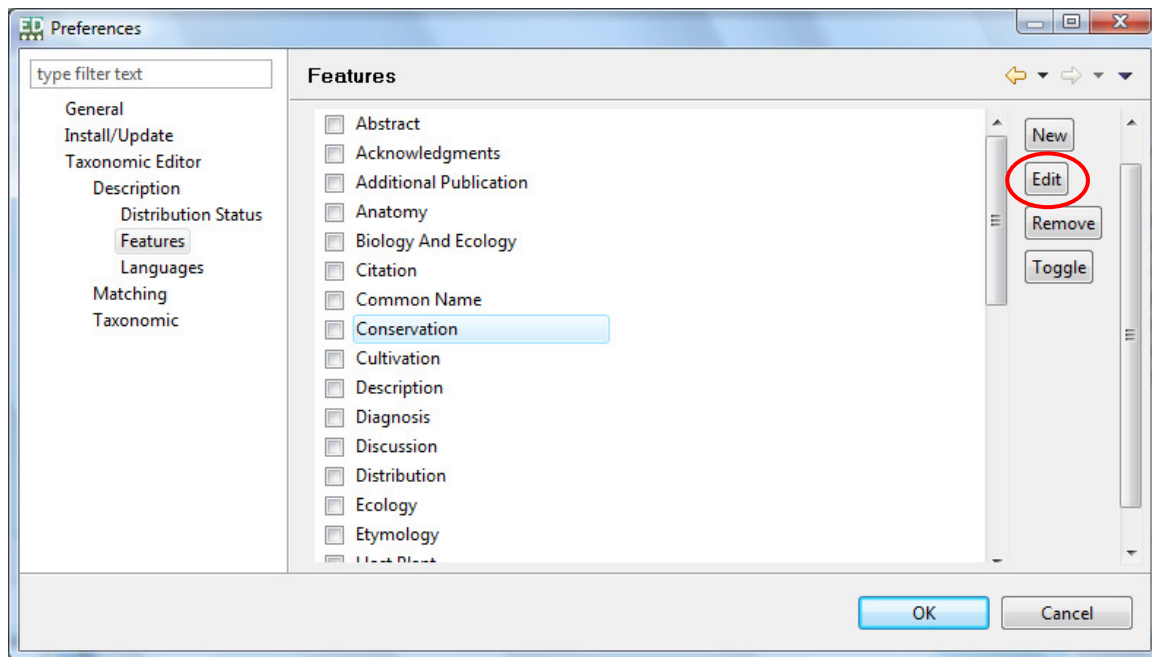
1. Open the **Preferences** pop-up box (**Toolbar > Window** menu > **Preferences** option).
2. Navigate to the element you wish to change by expanding the **Description** or **Taxonomic** menus found in the Taxonomic Editor menu:



3. Click on the data field you would like to edit so that it is highlighted. The example shown below is editing the **Conservation** feature.



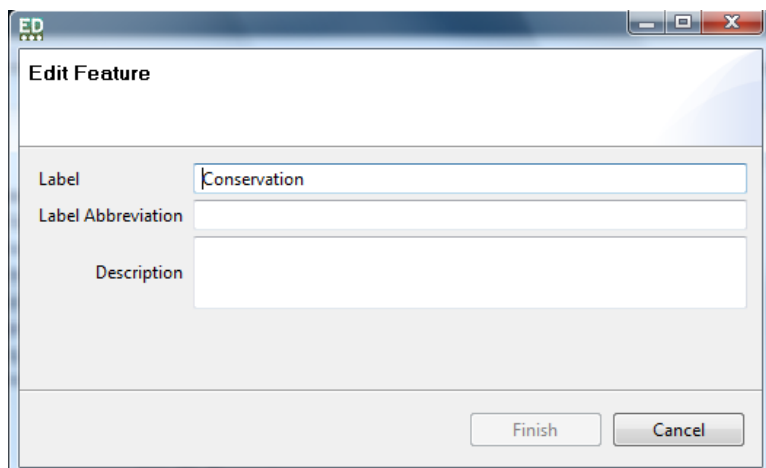
4. Click the **Edit** button:



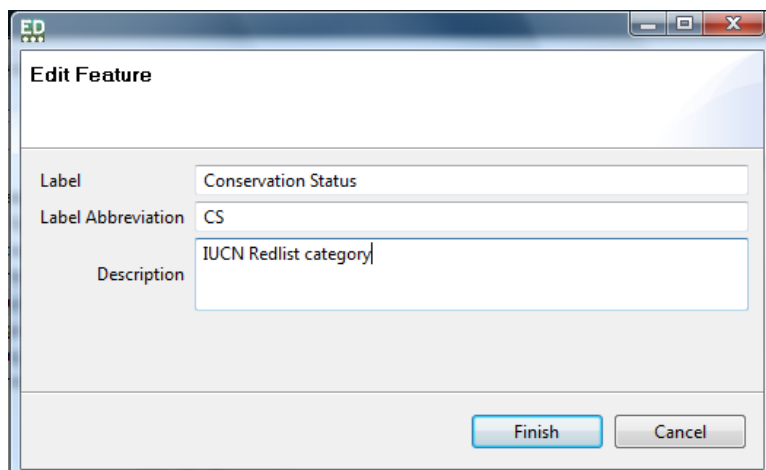
The “Edit Feature” pop-up box will open.

5. Edit the feature as desired. An example is given below:

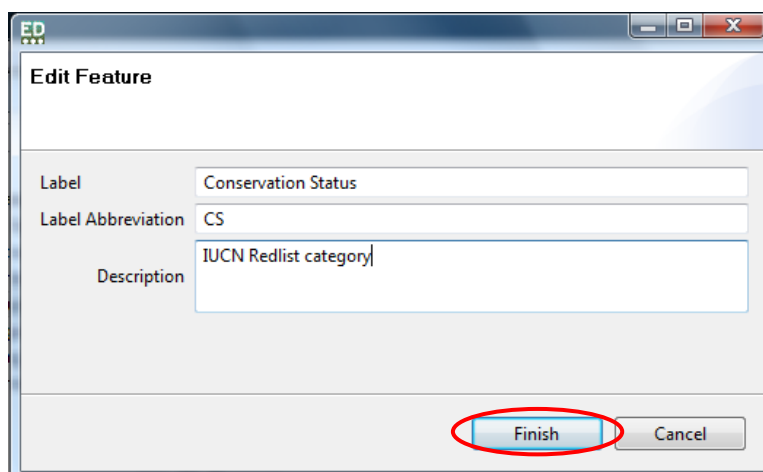
Original Feature details



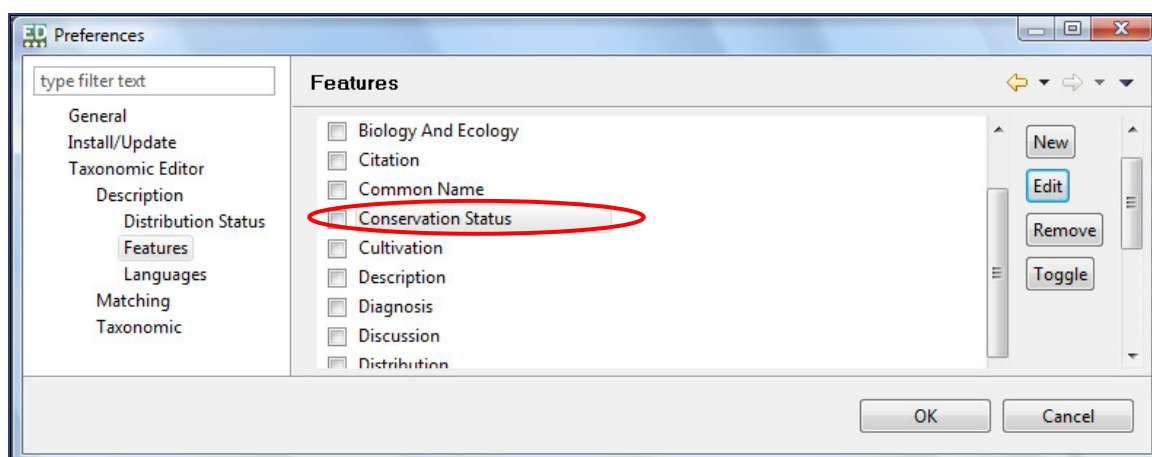
Edited Feature details



6. Click the **Finish** button:

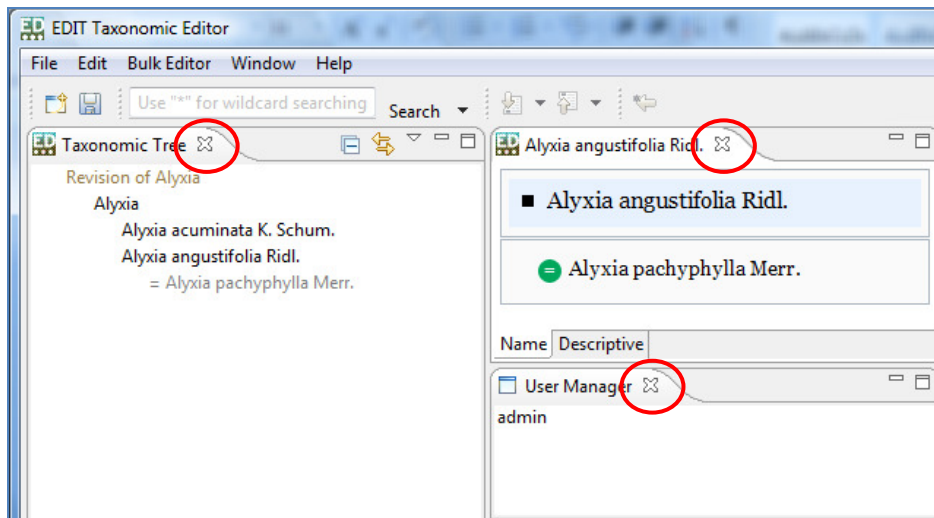


If you have edited the name of the Feature this will be immediately visible in the Features list:



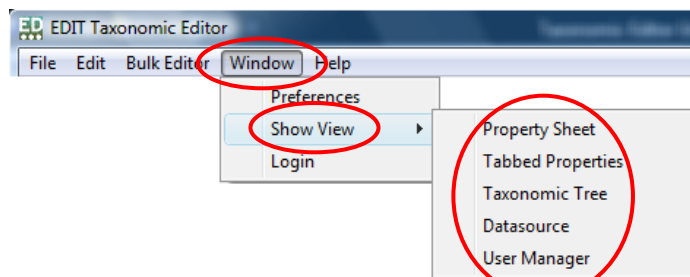
5.2 The Show View Menu

The five panels of the Taxonomic Editor can be closed independently by clicking on the (x) icon on the right-hand side of the tab of each panel. For example:



The **Properties Sheet**, **Taxonomic Tree**, **Datasource** and **User Manager** panels can be reopened by clicking the panel name under the **Show View** menu.

1. Click the **Windows** menu in the Toolbar. A drop-down box will appear.
2. Move the mouse to the **Show View** option in the drop-down box.



Toolbar > Window > Show View

3. Click the panel option that you wish to open.

The panel will re-open in the Taxonomic Editor window.

Please Note: The Tabbed Properties option is for development purposes only and will be removed in the next version of the Editor.

The **Freetext** panel is automatically re-activated after double-clicking on a taxon record in the **Taxonomic Tree** panel.

Tip! If, when you select a panel in the Show View menu you still cannot see it in the Taxonomic Editor window, it may have been minimised. Check at the bottom right of the window for minimised panels:

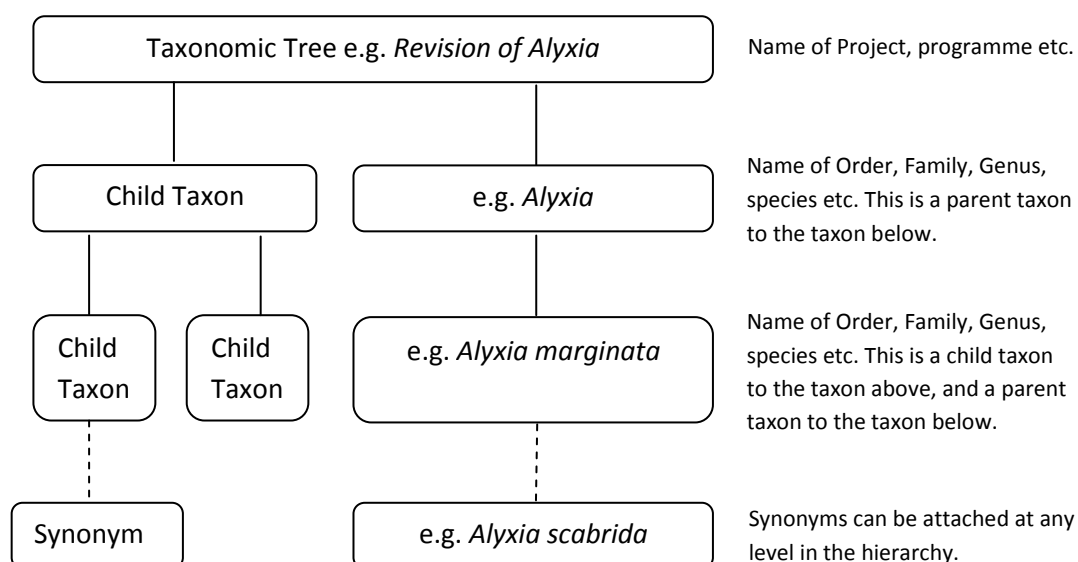
6.0 Creating and Building your Database

This section tells you how to:

- Understand the hierarchical system of a Taxonomic Editor database.
- Create and build a new taxonomic treatment database by creating taxonomic trees and adding child taxa.

6.1 Note on terms and organisation within the Taxonomic Editor

The Taxonomic Editor allows for the input of data in a hierarchical way. Databases within the Taxonomic Editor consist of taxonomic trees and taxa. Taxa can be independent or they can be linked to other taxa in a parent/child relationship:

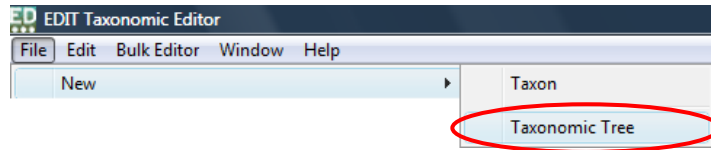


You can have an unlimited number of Taxonomic Trees within your database, with unlimited numbers of taxa in each tree (however you may wish to store distinct taxonomic treatments in separate Datasources; see [Creating Multiple Datasources](#) on page 15). Synonyms can be attached to any taxon at any level.

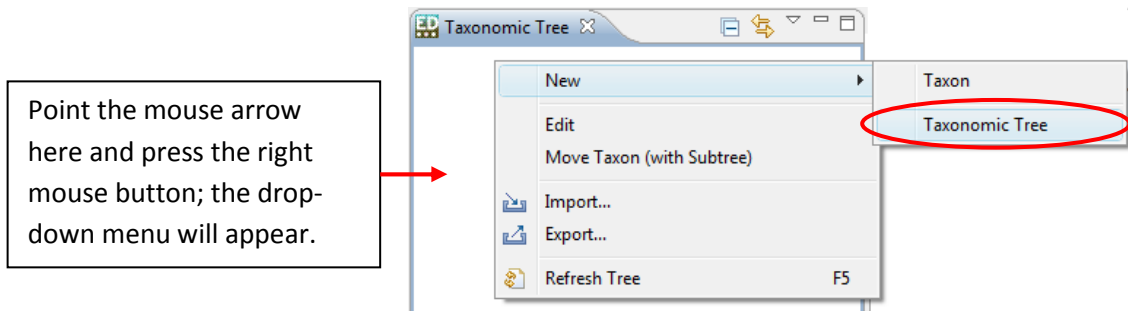
6.2 Creating a New Taxonomic Tree

When using the Taxonomic Editor for the first time, you will need to create a new Taxonomic Tree. This will create a root within the Taxonomic Tree panel to which all following taxa records will be anchored; you may therefore want to give the taxonomic tree the name of a project, revision or family for example. You can create a new Taxonomic Tree via the **File** menu:

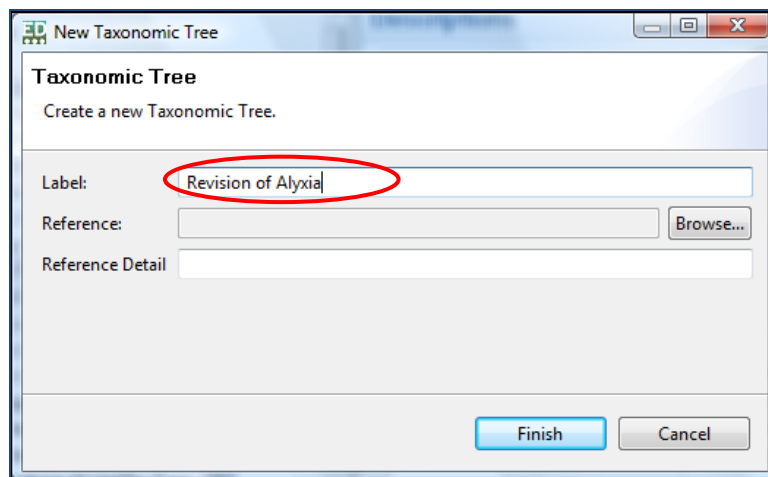
1. Click the **File** menu in the **Toolbar** > move the mouse to the **New** option; a drop-down menu will appear > Click the **Taxonomic Tree** option:



Alternatively, you can access the **New > Taxonomic Tree** menu by clicking the right mouse button with the mouse arrow pointing within the **Taxonomic Tree** panel:

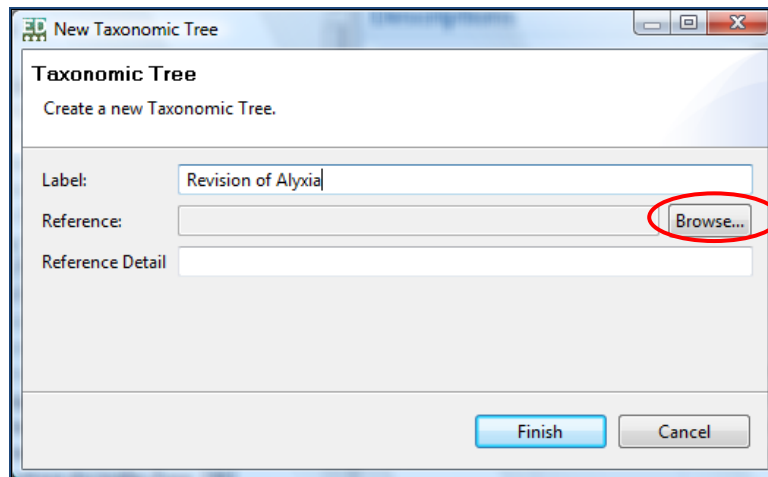


2. Enter a label for the Taxonomic Tree. This could be the name of a project or publication, for example:



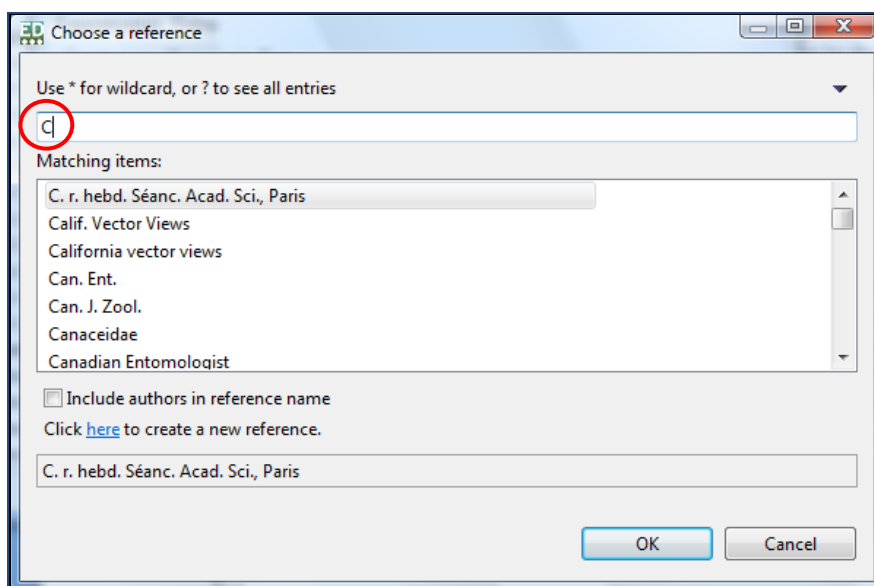
You may enter reference details if you wish:

3. Click the **Browse** button to the right of the Reference field:

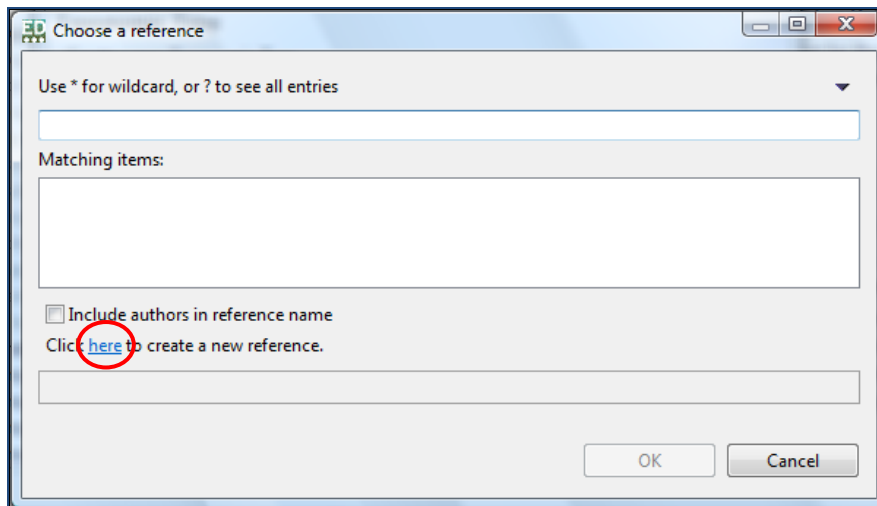


A new pop-up box entitled “**Choose a reference**” will appear. The cursor will appear in the search box by default. You can search here for a reference that you already have within your database:

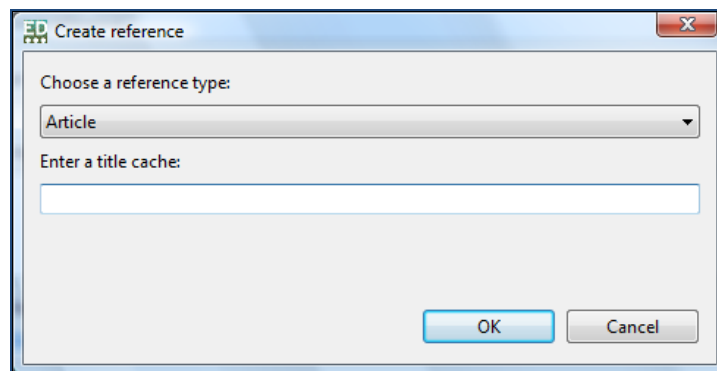
4. Type in the title of the reference; as you type, matching references from within your database will be filtered and shown in the “**Matching items**” box beneath the search box:



If you are creating a new database or do not have the required reference already input, you can choose to create a new reference by clicking the text at the bottom of the “Choose a reference” box:

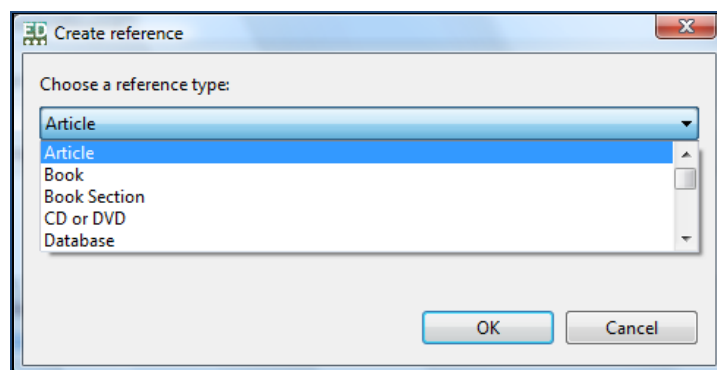


The “**Create reference**” pop-up box will appear:



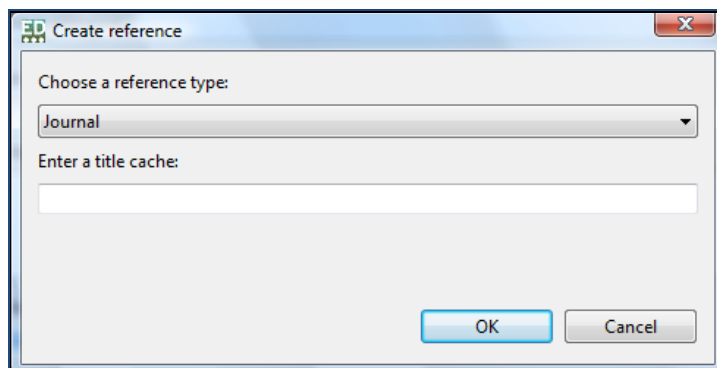
Choose a reference type from the drop-down menu:

5. Click on the arrow to the right of the Reference Type field; a drop-down list will appear:



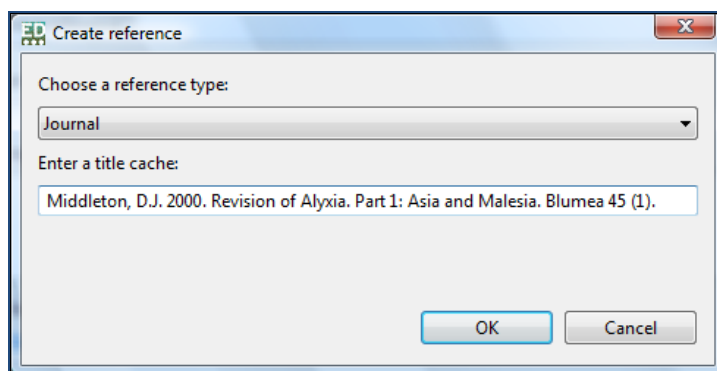
6. Scroll down the list; there are several methods for doing this:
 - a. Use the up and down arrows on your keyboard;
 - b. Use the mouse wheel if you have one;
 - c. Click and drag the position icon at the right hand side of the drop-down list;
 - d. Click the up and down arrows at the right hand side of the drop-down list.

7. Click the desired reference type; the drop-down list will close.

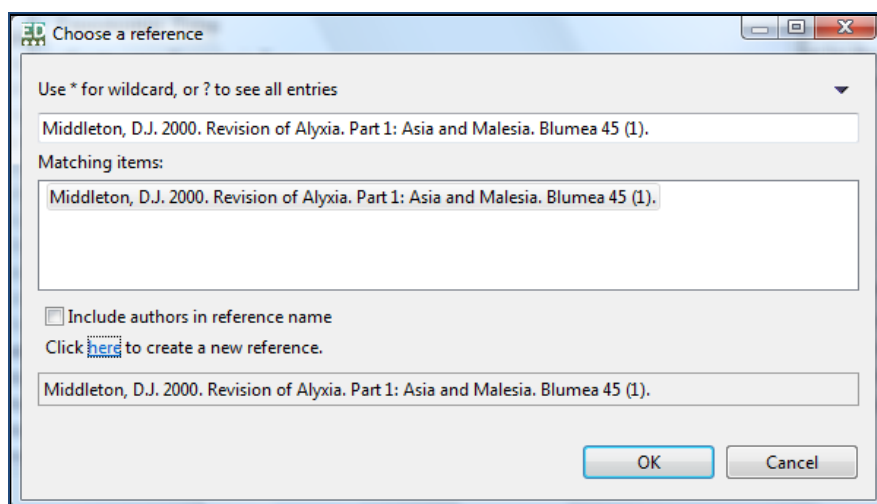


Alternatively to 6 and 7 above, type the first letter of the reference type you wish to select whilst the reference type field is highlighted. Matching options will be shown each time you press the initial letter. Continue until the desired option is shown in the reference type field.

8. Enter the details of the reference in the title cache field:



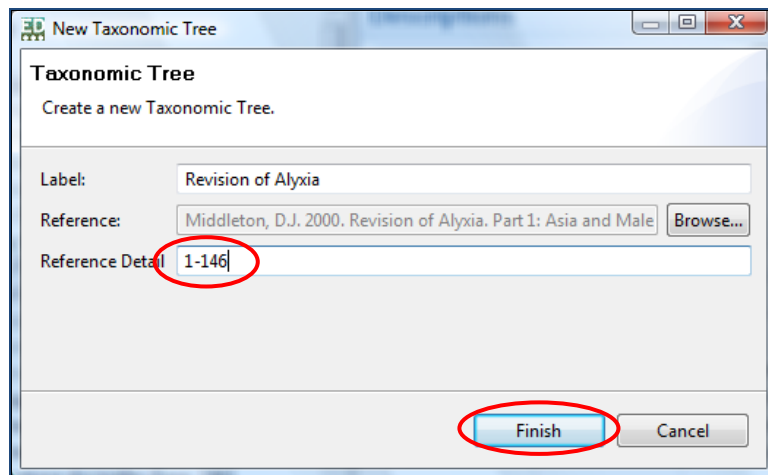
9. Press the **Return** button on the keyboard or click the **OK** button; the “Create reference” box will close and you will be returned to the “Choose a reference” box:



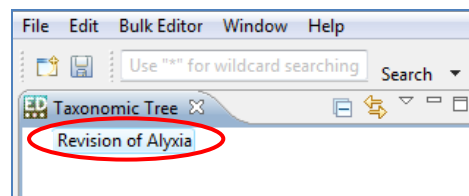
10. Press the **Return** button on the keyboard or click the **OK** button; the “Choose a reference” box will be closed and you will be returned to the “New Taxonomic Tree” box.

If you wish to input reference details such as page numbers you can do so now:

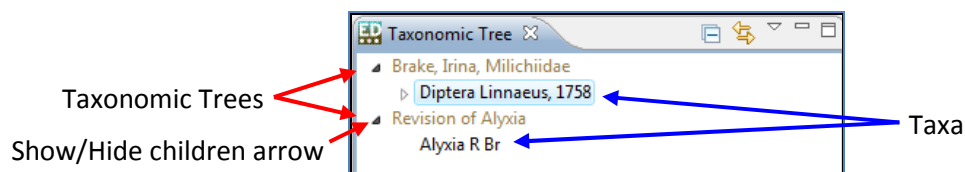
11. Click in the **Reference Detail** field; the cursor will appear.
12. Type in the desired data.
13. Click **Finish** or press **Return** on the keyboard:



The name of your new Taxonomic Tree will appear in the Taxonomic Tree panel:



It is possible to have more than one Taxonomic Tree in your database. Simply create a new taxonomic tree using the method above. The trees will be listed in the Taxonomic Tree panel simultaneously. Also note that the Taxonomic Tree names are displayed in a lighter colour than the actual taxa names. You can use the arrows to the left of the taxonomic tree labels and the taxa to show or hide the child taxon/taxa that are attached to that tree or taxon:



6.3 Adding Taxa to your Taxonomic Tree

There are two ways of adding taxa to your taxonomic tree. Using the right-click button (below) is quicker and involves less steps.

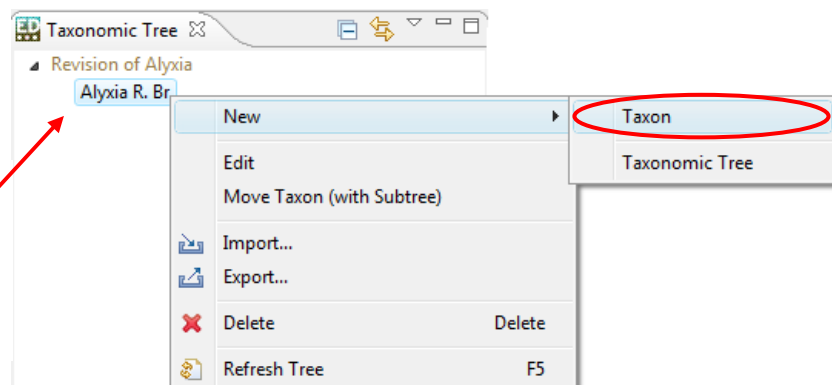
6.3.1 Using the Right-Click Button

Once you have created your first Taxonomic Tree, you can add taxa to build up your database according to your taxonomic treatment. You add taxa to your tree by creating a **New Taxon** that will be linked to both the tree and a parent taxon if appropriate. The following description is the quickest way to add a **New Taxon** to your tree:

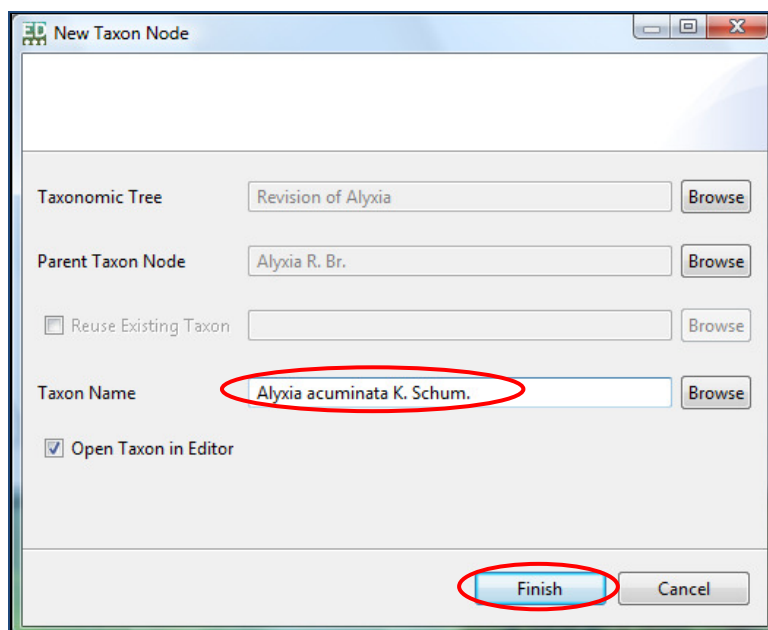
Point the mouse arrow at the Taxonomic Tree or the intended parent taxon of your new taxon. As you hover over the entries in the Taxonomic Tree panel they will become highlighted and a hand icon will appear.

1. Click the right mouse button; a drop-down menu will appear.
2. Point the mouse at the “**New**” option; a drop-down menu will appear.
3. Click **Taxon**:

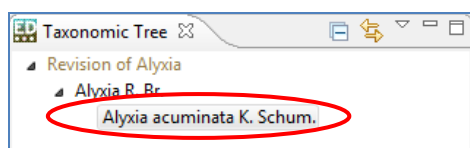
In this example Alyxia will be the parent taxon of the new taxon, as indicated by the fact that it is highlighted.



4. Enter the name of the taxon, including authorship if you wish.
5. Click the **Finish** button or press the **Return** button on the keyboard:



The new taxon record will appear in the **Taxonomic Tree** panel and is saved automatically:



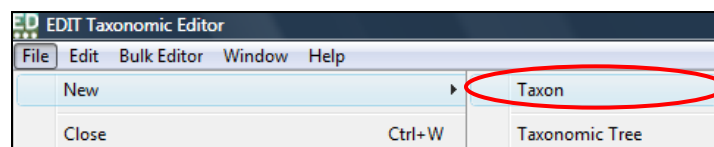
You can continue to add new taxa to the taxonomic tree in this way in order to build up your taxonomic treatment. To create and manage synonyms and other relationships, see [Managing Taxonomic Relationships](#) on page 65.

If you want to open the taxon record to view the parsing status of the information you have input (see [Parsing Status Feedback](#) on page 52) or add to or edit the record (see the following section), simply double-click the taxon name in the **Taxonomic Tree** panel.

6.3.2 Using the File > New Menu

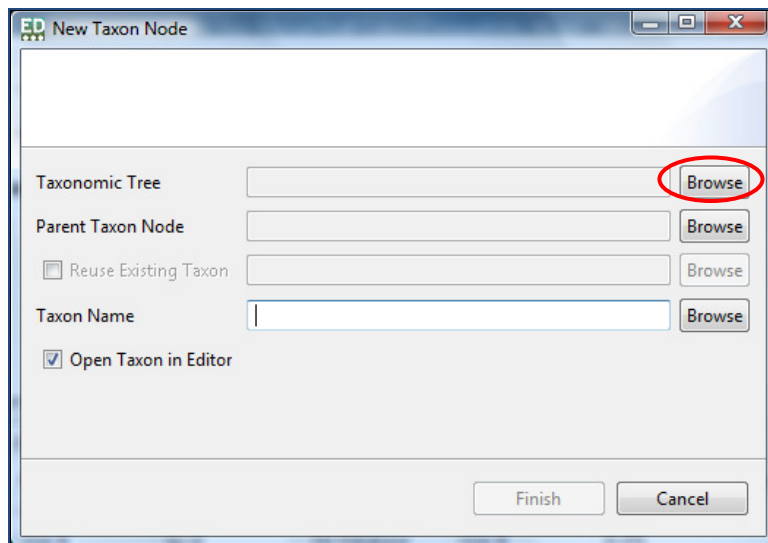
As well as the above method, you can also access the New Taxon window via the **File > New** menu on the toolbar. However, using this method you will need to manually input the Taxonomic Tree and the Parent Taxon (if any) of the taxon that you are inputting.

1. Click on the **File** menu in the toolbar > **New > Taxon**:



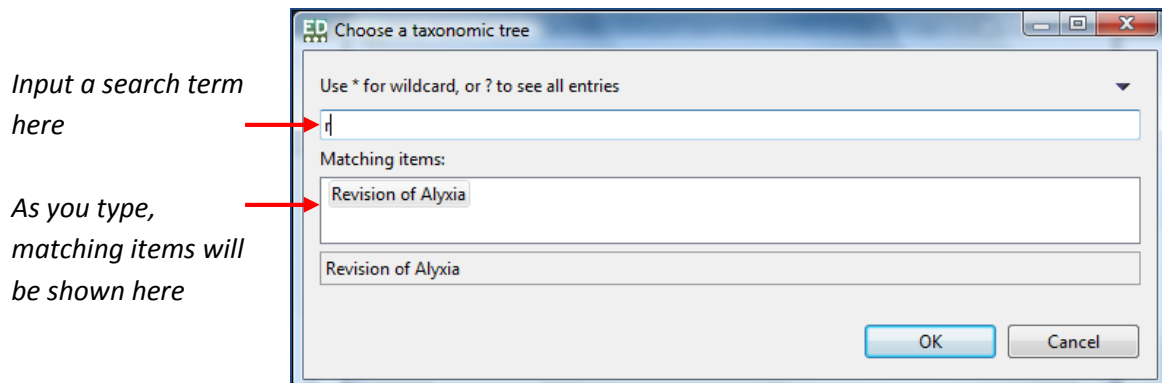
The New Taxon Node pop-up box will open.

2. Click the **Browse** button to the right of the Taxonomic Tree field:

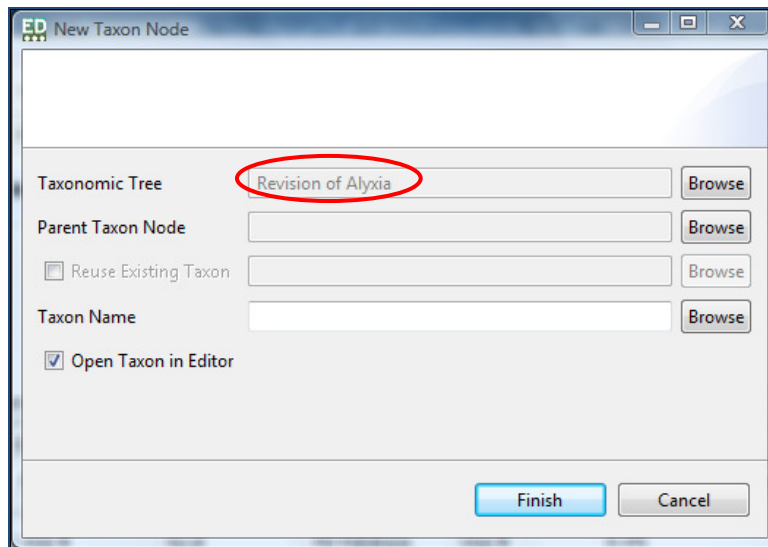


The “Choose a taxonomic tree” pop-up box will open.

3. Enter a search term for the name of the Taxonomic Tree, for example the first letter of the name. As you type, matching taxonomic trees will be shown in the “Matching items” field below:

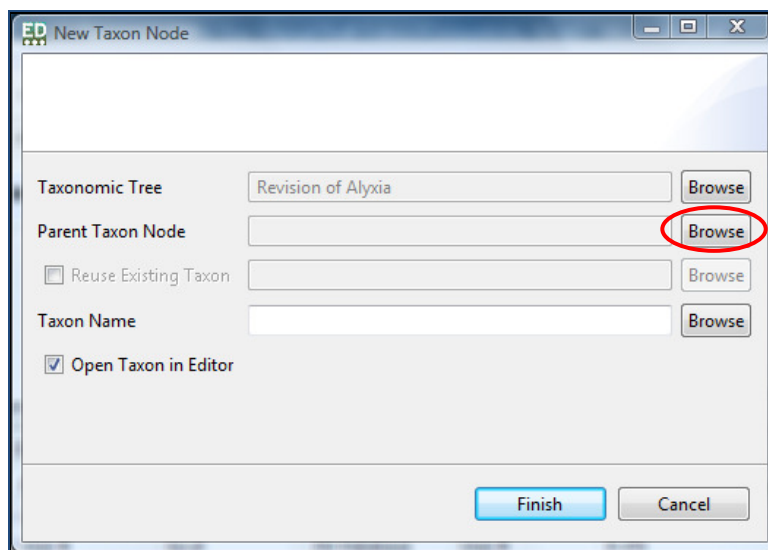


4. Click the name of the desired tree from the list in the “Matching items” field.
5. Click **OK**; the pop-up box will close and the name of the Taxonomic Tree will be shown in the Taxonomic Tree field:



If appropriate, you can now choose a parent taxon node to attach the new taxon to in the exact same way:

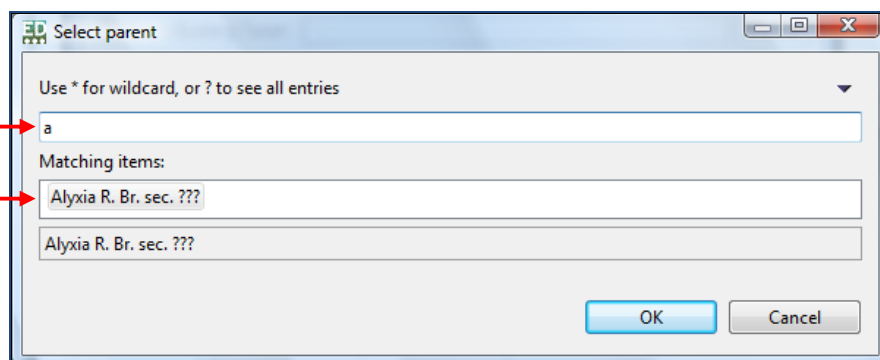
6. Click the **Browse** button to the right of the Parent Taxon Node field:



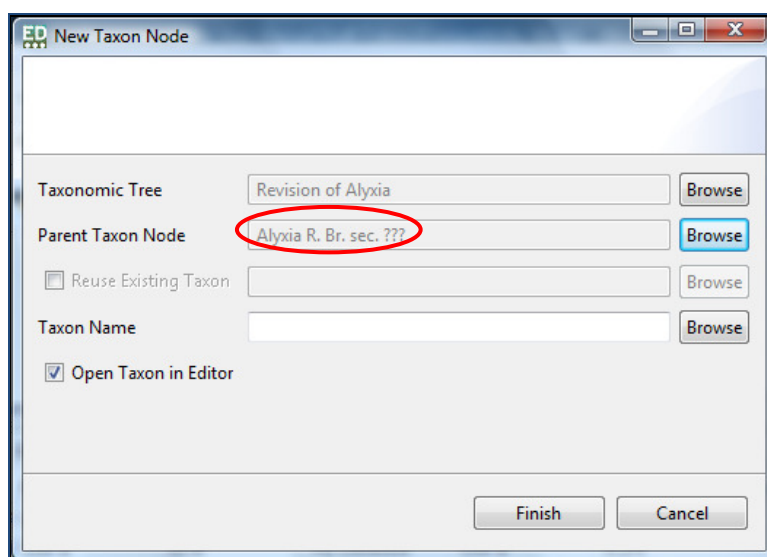
The “Choose a parent taxon node” pop-up box will open.

7. Enter a search term for the name of the parent taxon, for example the first letter of the name. As you type, matching taxa from your selected Taxonomic Tree will be shown in the “Matching items” field below:

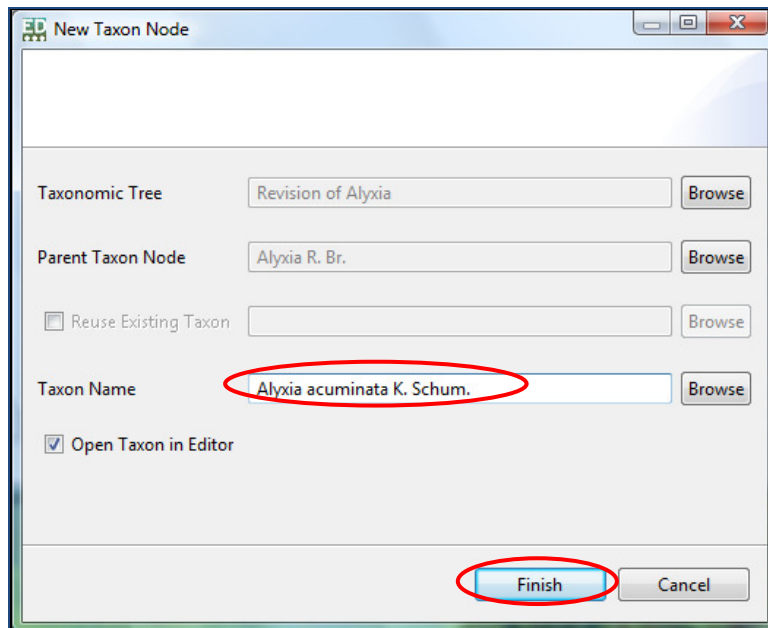
Input a search term here
As you type, matching items will be shown here



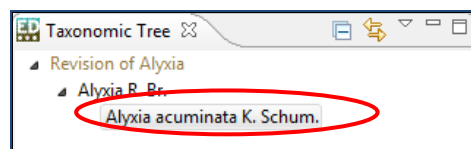
8. Click the name of the desired parent taxon from the list in the “Matching items” field.
9. Click **OK**; the pop-up box will close and the name of the parent taxon will be shown in the Parent Taxon Node field:



10. Click in the **Taxon Name** field.
11. Enter the name of the taxon, including authorship if you wish.
12. Click the **Finish** button or press the **Return** button on the keyboard:



The new taxon record will appear in the **Taxonomic Tree** panel and is saved automatically:



You can continue new taxa to any node in the taxonomic tree in this way in order to build up your taxonomic treatment. To create and manage synonyms and other relationships, see [Managing Taxonomic Relationships](#) on page 65.

If you want to open the taxon record to view the parsing status of the information you have input (see [Parsing Status Feedback](#) on page 52) or add to or edit the record (see the following section), simply double-click the taxon name in the **Taxonomic Tree** panel.

7.0 Editing your Taxa

This section tells you how to:

- Check the parsing status of your taxon records.
- Deal with parsing problems by editing basic fields in the Properties Sheet.
- Delete a taxon from your taxonomic treatment.
- Understand the bulk editor and how to use it to merge duplicate entries.
- Save you work.

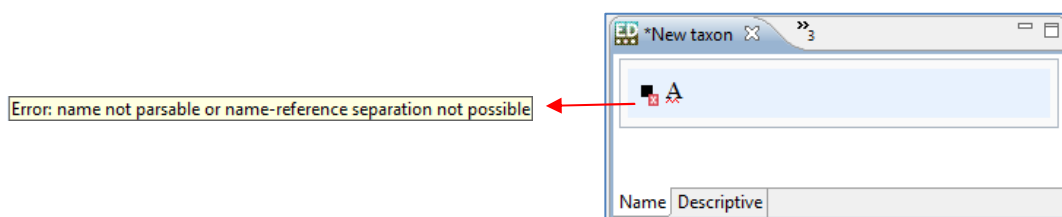
7.1 Parsing Status Feedback


Parsing is the automatic separation of taxa data into its constituents parts, which is then stored separately in the database. Editing your taxa records may therefore involve checking and editing the parsing behaviour. The results of parsing your data will be displayed in the **Properties Sheet**.

The Taxonomic Editor will display the parsing status of a record when it is open in the **Freetext** panel. If the taxon record you would like to check is not open, you can navigate and activate the record as described in **The Freetext Panel** on page 26.

The parsing status is shown in the form of warning icons to the left of the taxon name and lines beneath the taxon name in the **Freetext** panel. Hovering over a warning icon with the mouse arrow will reveal a more detailed messages (the messages shown below are examples). The colours of the icons are also indications of the type of warning. There are three possible parsing states:

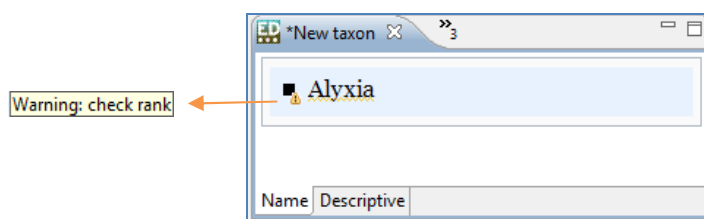
7.1.1 Red warning icon = Parsing has been unsuccessful



The taxon name will be underlined in red and there will be the red warning sign  to the left of the taxon name. This warning sign indicates that the parser has not been able to separate the text string into its constituent parts.

You can rectify this by editing the taxon information, if necessary, in the **Properties Sheet** (see **Dealing with Parsing Problems** below).

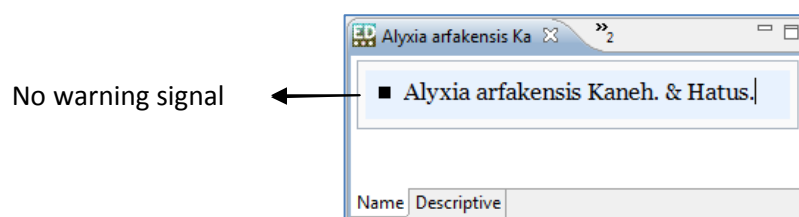
7.1.2 Orange warning icon = Parsing completed but checks are recommended



The taxon name will be underlined in orange and there will be an orange warning sign 🚩 to the left of the taxon name. This indicates that parsing has been successful, but that there is an element of uncertainty and you may want to check that the parser has correctly inserted the separate elements of your text string in the correct data fields. Hovering over the warning sign will give you details on which element to check. In the example above the warning says to check that the **Rank** status has been accurately determined. You have to check this in the **Properties Sheet** (see [Dealing with Parsing Problems](#) below).

7.1.3 Black text only = No warning signal

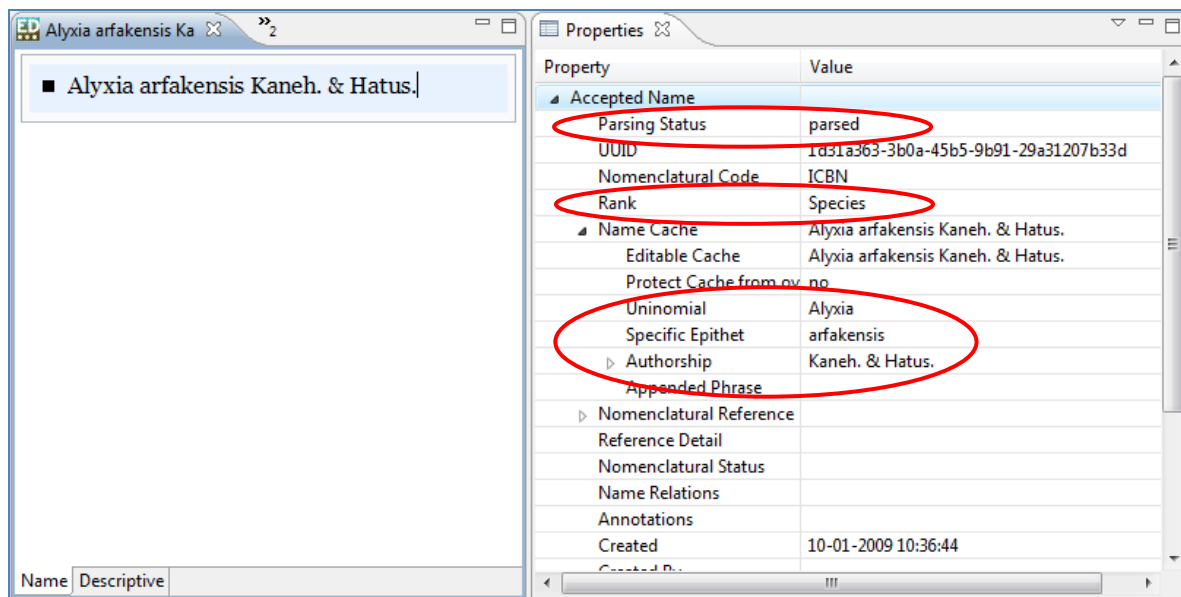
A successful parsing action will be apparent from the lack of a warning sign and no underline appearing beneath the taxon name in the **Freertext** panel. This indicates that the text string has been separated into its constituent parts with confidence.



You may still check the parsing results in the **Properties Sheet** if you wish (see [Dealing with Parsing Problems](#) below).

7.1.4 A Successfully Parsed Taxon Record

A successfully parsed taxon record is given in the following example. You should note the **Parsing Status** = parsed, and the **Uninomial**, **Specific Epithet** and **Authorship** of the new taxon, shown in the **Name Cache** menu, have been parsed to the correct locations.

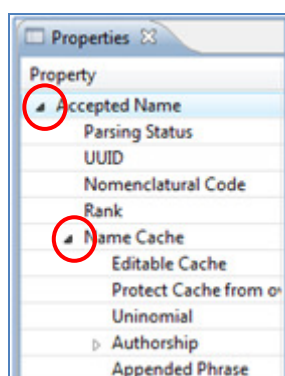


7.2 Dealing with Parsing Problems

If you have received a warning sign after entering a new taxon (see [Parsing Status Feedback](#) above) or would like to check the parsing results you will need to check these data fields in the **Properties Sheet**. This panel is an editable display of the data fields that are contained within the database. A taxon record is displayed in the **Properties Sheet** when it has been activated in the **Freetext** panel. If the taxon you need to edit is not yet open you can activate it by double-clicking the taxon record in the **Taxonomic Tree** panel (see [The Freetext Panel](#) on page 26 for further details).

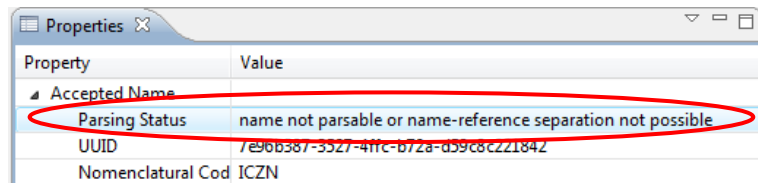
Initially you will need to expand the high level menus to reveal the relevant data fields and further menus below them. This will include at least the **Accepted Name** menu, but you may also need to expand the **Name Cache** menu depending on the information you are checking/editing.

The menus can be expanded or minimised using the arrow icons to the left of the appropriate menu. These arrows are only activated when the mouse arrow is located within the **Properties Sheet** panel.



This version of the manual explains how to address problems with the basic data fields of **Rank**, **Uninomial** and **Specific Epithet**. The **Parsing Status** field at the top of the **Properties Sheet** will inform you of which field to check:

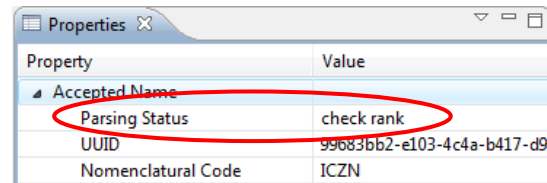
*If you see this parsing status you should check the **Uninomial** and **Specific Epithet** fields*



The screenshot shows a 'Properties' window with a table. The 'Accepted Name' section is expanded, and the 'Parsing Status' field is highlighted with a red oval. The value for 'Parsing Status' is 'name not parsable or name-reference separation not possible'. Other fields include 'UUID' with value '7e96b387-3527-4ffc-b72a-d39c6c221842' and 'Nomenclatural Cod' with value 'ICZN'.

Property	Value
Accepted Name	
Parsing Status	name not parsable or name-reference separation not possible
UUID	7e96b387-3527-4ffc-b72a-d39c6c221842
Nomenclatural Cod	ICZN

*If you see this parsing status you should check the **Rank** field*



The screenshot shows a 'Properties' window with a table. The 'Accepted Name' section is expanded, and the 'Parsing Status' field is highlighted with a red oval. The value for 'Parsing Status' is 'check rank'. Other fields include 'UUID' with value '996836b2-e103-4c4a-b417-d9' and 'Nomenclatural Code' with value 'ICZN'.

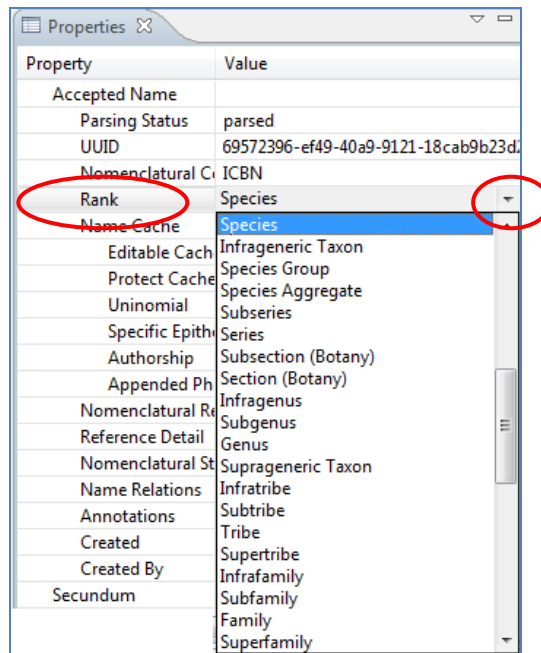
Property	Value
Accepted Name	
Parsing Status	check rank
UUID	996836b2-e103-4c4a-b417-d9
Nomenclatural Code	ICZN

Remember, if there continues to be a parsing problem after you have checked that the correct data is stored in the correct data field, the record can remain as it is; you will not be forced to eliminate the parsing problem before the data can be saved.

7.2.1 Rank

The Parsing Status of the field may ask you to check the **Rank** data field. If the rank is correct, there is no need to take any action. If the rank is incorrect, you can change it using the drop-down menu:

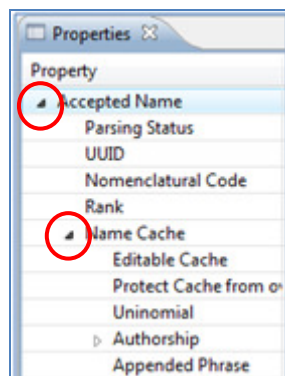
1. Expand the **Accepted Name** menu using the arrow to the left of the menu.
2. Click within the **Rank** data field; the field will be activated and a drop-down menu arrow will appear at the right of the field.
3. Click on the drop-down menu arrow; the data options for the Rank field will appear.
4. Navigate to the correct rank value using the bar at the right hand side of the menu to scroll down if necessary.
5. Click the correct rank value; the drop-down menu will close and the selected rank will be shown in the rank data field.
6. Save the record (see [Saving your Work](#) on page 62).



Note the many options in the **Rank** drop-down menu. This menu can be customised to show only those ranks which you are likely to use. See [Show/Hide Options of Drop-Down Menus](#) on page 31 for further information.

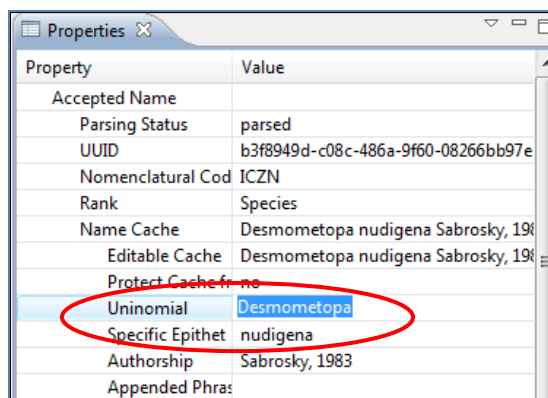
7.2.2 Uninomial and Specific Epithet

In order for these fields to be visible, both the **Accepted Name** and **Name Cache** menus need to be expanded using the arrows to the left of the data field name:



If these fields are incorrect, they can be edited simply:

1. Click in the relevant field; the field will become highlighted:



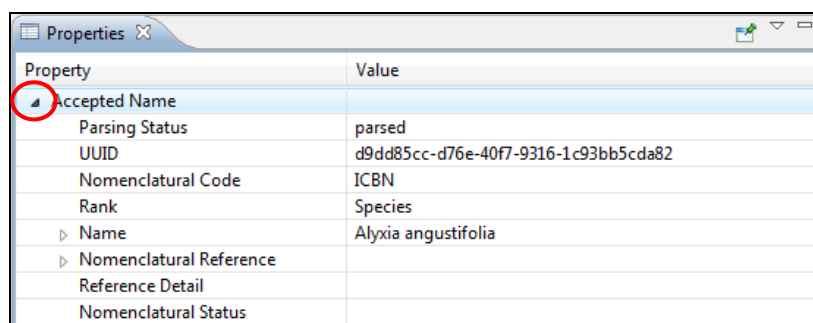
2. Make the correction.
3. Save the record (see [Saving your Work](#) on page 62).

7.3 Adding the Nomenclatural Status of a Name using the Properties Sheet

The Properties sheet of this version of the Taxonomic Editor will be changed significantly in the next version of the Editor. Therefore the manual will not go into detail about how it works and how to use it at this stage. However, it will give one example of how to enter data using the Properties sheet; how to assign a status to a taxon name, for example, illegitimate, invalid, valid.

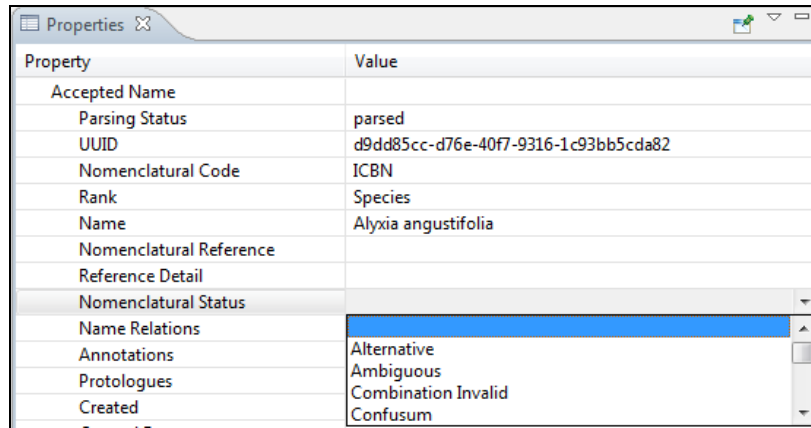
If the taxon you want to edit is not yet open you can activate it by double-clicking the taxon record in the **Taxonomic Tree** panel (see [The Freetext Panel](#) on page 26 for further details).

1. Expand the Accepted Name menu by clicking the arrow icon to the left of the field label:



The Accepted Name menu will expand.

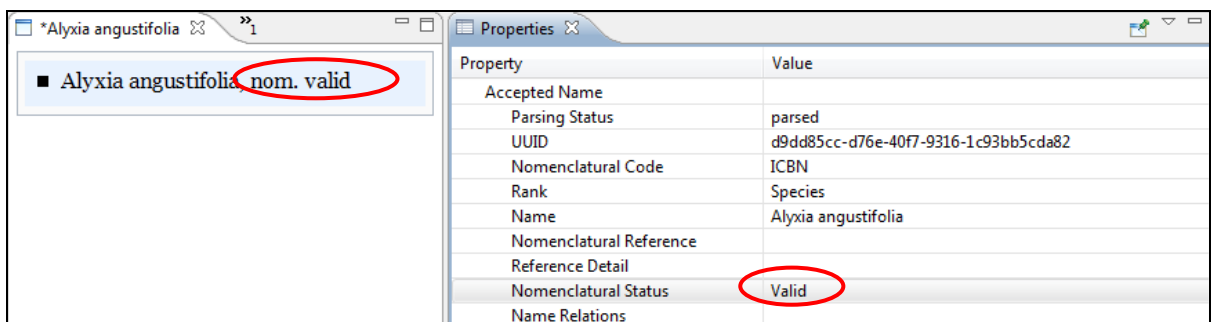
2. Click in the Nomenclatural Status field; the cursor will appear in the field and a drop-down menu arrow will appear at the right of the field.
3. Click the drop-down menu arrow; the menu will appear:



4. To navigate to and select the nomenclatural status you have several options:
 - a. Use the up and down arrows on the keyboard until the desired nomenclatural status is highlighted and press the return button.
 - b. Navigate the menu by using the mouse to move the scroll bar to the right of the menu up and down, or if your mouse has a wheel you can also use that. Click on the desired nomenclatural status.
 - c. Type the first letter of the name of the nomenclatural status, for example, “V” for “Valid”. The Editor will automatically jump to the first entry within the menu with that first letter. Repeat pressing the letter until the desired nomenclatural status is highlighted and press the return button.

Please Note: for this method to work you must enter the letter before any selection has been made, i.e. when the Nomenclatural Status field is blank.

The drop-down menu will close, your selection will be shown in the Nomenclatural Status field, and the text string in the Freetext panel will be updated:

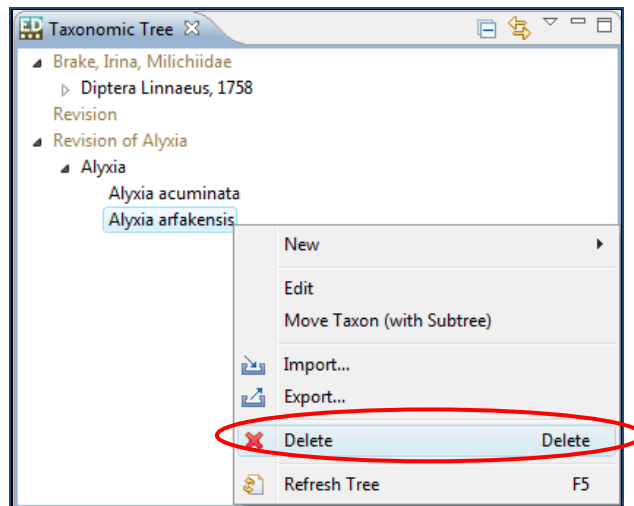


5. Save the record (see [Saving your Work](#) on page 62).

7.4 Deleting a Taxon

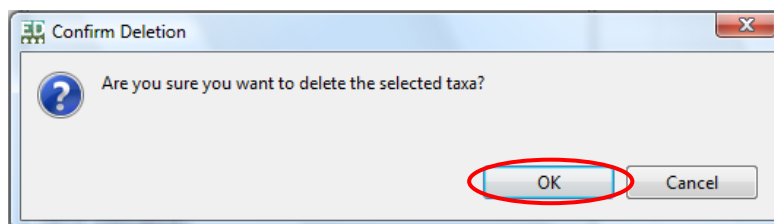
There are two ways of deleting a taxon:

1. Click on the taxon in the **Taxonomic Tree** panel > press **delete** on the keyboard > go to step 3., or:
2. Point the mouse arrow at the taxon name in the **Taxonomic Tree** panel and click the right mouse button; a drop-down menu will appear > click the **Delete** option.



A pop-up box will appear asking you for confirmation to delete the taxon from the taxonomic view.

3. Click the **OK** button:

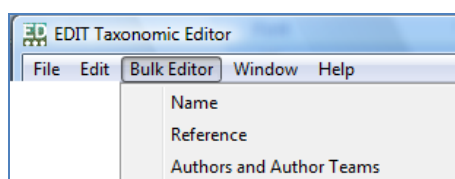


The taxon will disappear from the Taxonomic Tree panel.

Please Note: You can delete a taxon even if it has child taxa attached to it; all the records will be deleted. You cannot undo this action so you should be sure that this is what you want to do.

7.5 Bulk Editing

7.5.1 About Bulk Editing



Toolbar > Bulk Editor menu

The bulk editor allows multiple taxon records that share **Names**, **References** or **Authors and Author Teams** data to be edited. These data types are not easily edited in the course of normal taxon editing and are frequently referenced (shared) in several places within a dataset, therefore they are edited in a separate location.

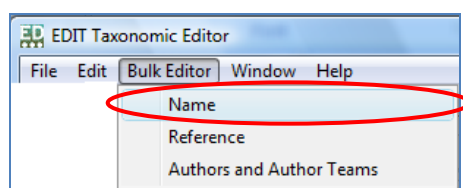
The **Bulk Editor** consists of a search field and a list editor. The list is populated when a search is executed. The **Property Sheet** is used to display and edit details of the object which is currently activated; changes made in the **Property Sheet** are reflected immediately in the list.

This version of the manual will explain how to edit the name of multiple taxa records.

7.5.2 Bulk Editing Names

In this example, we search for all the taxa within a Genus and change the Genus name.

1. In the Toolbar area, click on the Bulk Editor menu; a drop-down menu will appear.
2. Click the **Name** option.

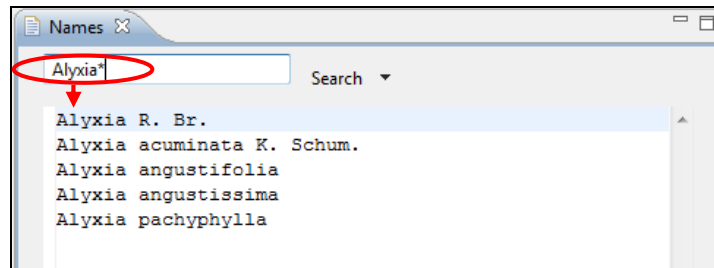


You will notice that a new tab has opened in the Freetext panel titled **Names**. The tab has a search bar at the top and a blank space below which will display the results of your search.

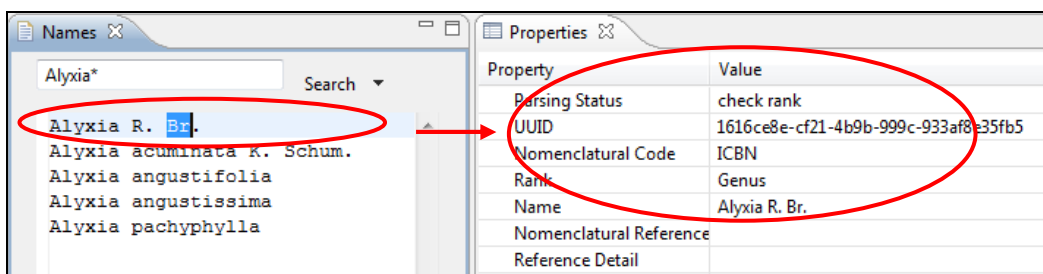
3. Click in search box.
4. Enter a search term in the search box.

To find multiple variations for the same name it is best to use a shortened version of the name with the 'wildcard' icon, an asterisk (*). The Taxonomic Editor will return all records that match the initial letters you have input but with no restrictions on the following characters (see the example below).

Press **Return** on the keyboard or click on the **Search** button to run your search. A list of matching records will appear beneath the search bar.

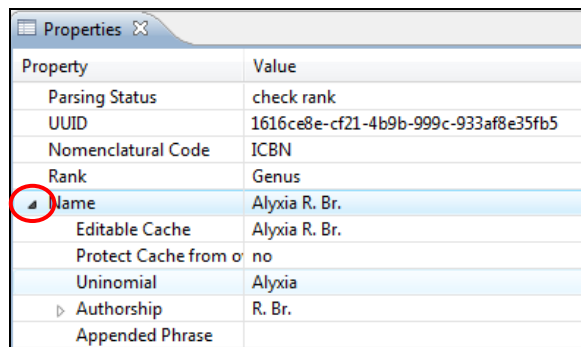


You will also find that the **Properties Sheet** will display information regarding each entry in the search results when you double-click its name within the list:



In order to now change the genus name of all the taxa displayed in the Names tab, double-click through the list and edit the name in the Properties Sheet to the right:

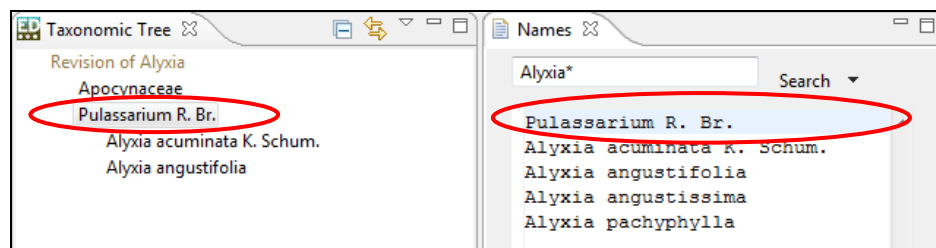
- Double-click on a taxon from the list in the Names tab in the Freetext panel; the taxon record will be activated in the Properties sheet as shown above.
- Expand the Name menu by clicking the arrow icon to the left of the field label:



- Click in the **Editable Cache** field.
- Edit the taxon name as desired, for example:

Property	Value
Parsing Status	check rank
UUID	1616ce8e-cf21-4b9b-999c-933af8e35fb5
Nomenclatural Code	ICBN
Rank	Genus
Name	Alyxia R. Br.
Editable Cache	Pulassarium R. Br.
Protect Cache from o	no
Uninomial	Alyxia
Authorship	R. Br.
Appended Phrase	

9. Click the **Save** icon; the name will automatically be changed in the Names tab in the Freetext panel and in the Taxonomic Tree:

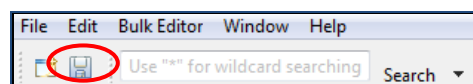


You can now move down the list in the Names tab and edit all the names as described above.

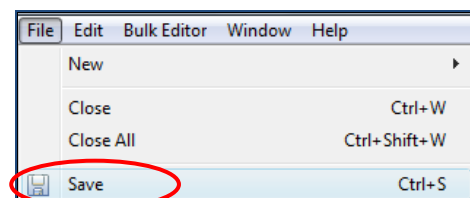
7.6 Saving your Work

Generally there are four ways in which you can save any changes to your data:

- a. By clicking on the save icon in the toolbar:

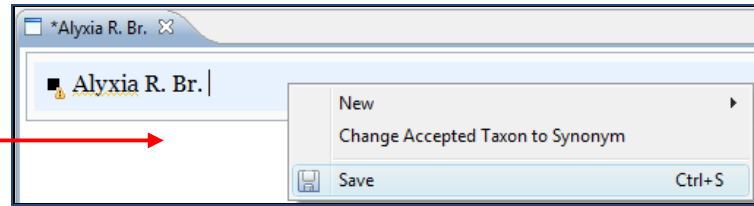


- b. Via the File menu:



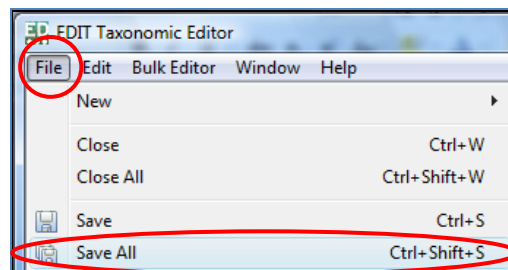
- c. By pressing the “Ctrl” and “S” button on the keyboard simultaneously.
- d. Via the right mouse button:

Point the mouse button within the Freetext panel > click the right hand mouse button > click **Save**.



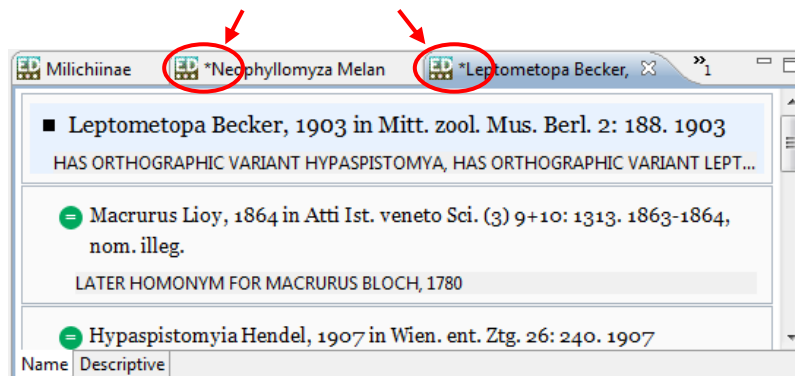
Please Note: If you have multiple taxon records with unsaved changes these methods will only save changes in the currently activated record i.e. the record that is open in the **Freetext** panel. To save all unsaved changes in multiple records you need to select the **Save All** option found under the File menu:

Click on the **File** menu in the **Toolbar**; the File drop-down menu will appear > Click on **Save All**.

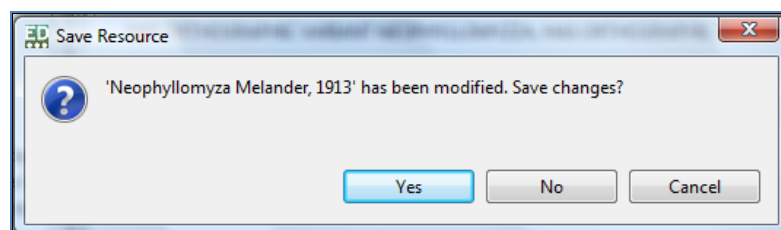


Any record that has been edited without being saved will be flagged with an asterisk in the **Freetext** panel to the left of the taxon name in the tab label:

An asterisk indicates unsaved changes

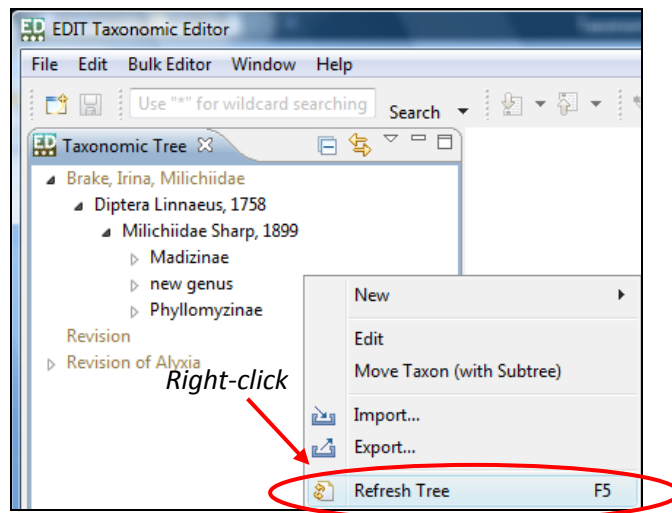


If you attempt to try to close an edited taxon record without saving your changes the Taxonomic Editor will give you a warning:



Any changes to text in the **Freetext** panel will not appear in the **Taxonomic Tree** panel until the changes have been saved as above. Alternatively, you can refresh the taxonomic tree by right-clicking anywhere in the Taxonomic Tree panel and selecting **Refresh Tree**:

Point the mouse arrow anywhere within the **Taxonomic Tree** panel > Click the right mouse button; a drop-down menu will appear > Click the **Refresh Tree** option.



8.0 Managing Taxonomic Relationships

This section tells you how to:

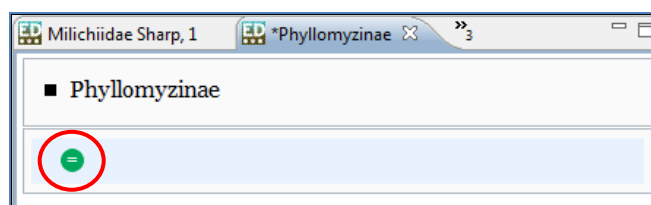
- Add heterotypic and homotypic synonyms to taxa.
- Save, delete and edit synonyms.
- Change a synonym to an accepted name.
- Change the position of taxa within a taxonomic tree.

8.1 Adding a Heterotypic Synonym

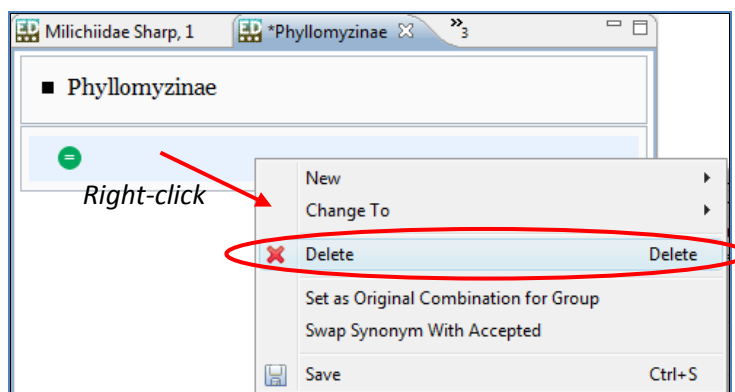
There is a quick and easy way of attaching synonyms to a taxon record:

1. In the **Taxonomic Tree** panel, double-click the taxon to which you want to attach a synonym; this will open the record in the **Freetext** panel if it is not already open (see **Activating Taxon Records** on page 27 for more information).
2. Click in the **Freetext** panel to the right of any text already entered.
3. Press **Return** on the keyboard.

Another text box will appear in the **Freetext** panel, below that of the root taxon/accepted name for which you are entering a synonym. You will notice the standard taxonomic synonym indicator (=) at the left hand side of the new text box within a green circle:



If the synonym text box was opened in error, point the mouse arrow into the synonym text box and click the right mouse button; a drop-down menu will open > click on the **Delete** option:

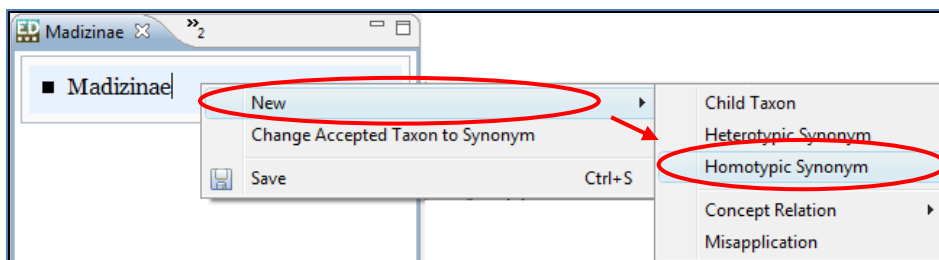


4. Enter the name of the synonym.
5. Save the synonym (see **Saving Synonyms** below).

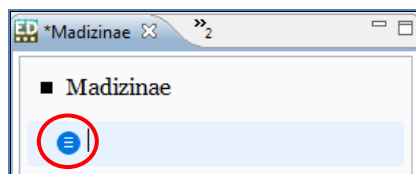
8.2 Adding a Homotypic Synonym

By default, a carriage return from a taxon record in the **Freetext** panel will create a new text box for a heterotypic synonym, as detailed above. Homotypic synonyms can be added using a drop-down menu:

1. Point the mouse arrow into the text box for the taxon to which you are attaching a homotypic synonym and click the right mouse button; a drop-down menu will appear.
2. Point the mouse at the **New** option at the top of the menu; a new menu will appear.
3. Click on the **Homotypic Synonym** option:



Another text box will appear in the **Freetext** panel, below that of the root taxon/accepted name for which you are entering a synonym. You will notice the homotypic synonym icon of (≡) inside a blue circle:

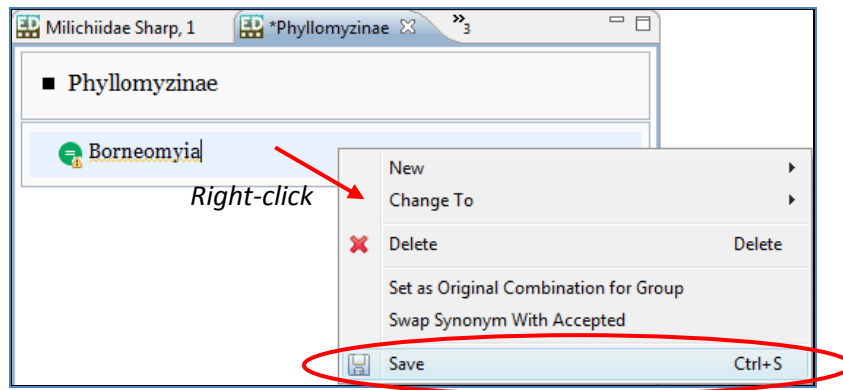


6. Enter the name of the synonym.
7. Save the synonym (see [Saving Synonyms](#) below).

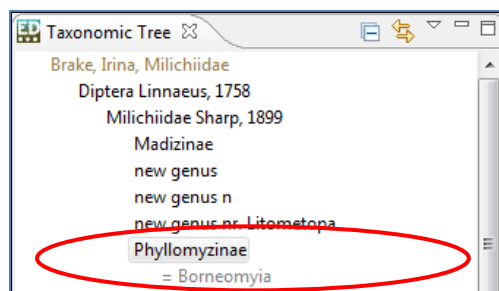
8.3 Saving Synonyms

You can save synonym records by either:

1. Pressing **Control** and **S** together on the keyboard, or by:
2. Pointing the mouse arrow into the synonym text box and click the right mouse button; a drop-down menu will open > click on the **Save** option:



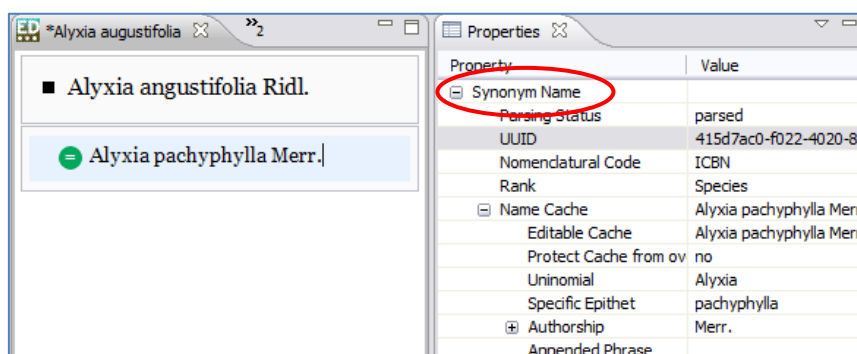
After you have saved the synonym name will appear in the **Taxonomic Tree** panel beneath the accepted name with a synonym symbol:



Note that synonyms are shown in the **Taxonomic Tree** panel in a lighter font than accepted names, and the synonym symbol (=) applies to all types of synonyms.

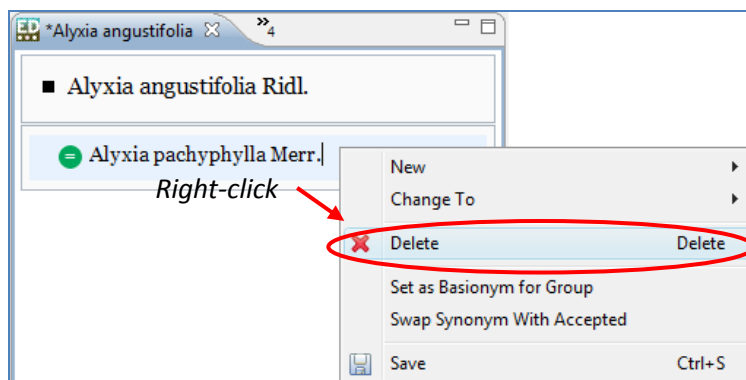
8.4 Editing Synonyms

A synonym name is parsed in exactly the same way as a root or child taxon. However, in the **Properties Sheet** panel you will see that **Synonym Name** is seen at the top, rather than Accepted Name. The details of a synonym name can be expanded and edited in the **Properties Sheet** panel in the same way as a child taxon (see [Editing your Taxa](#) on page 52).



8.5 Deleting a Synonym

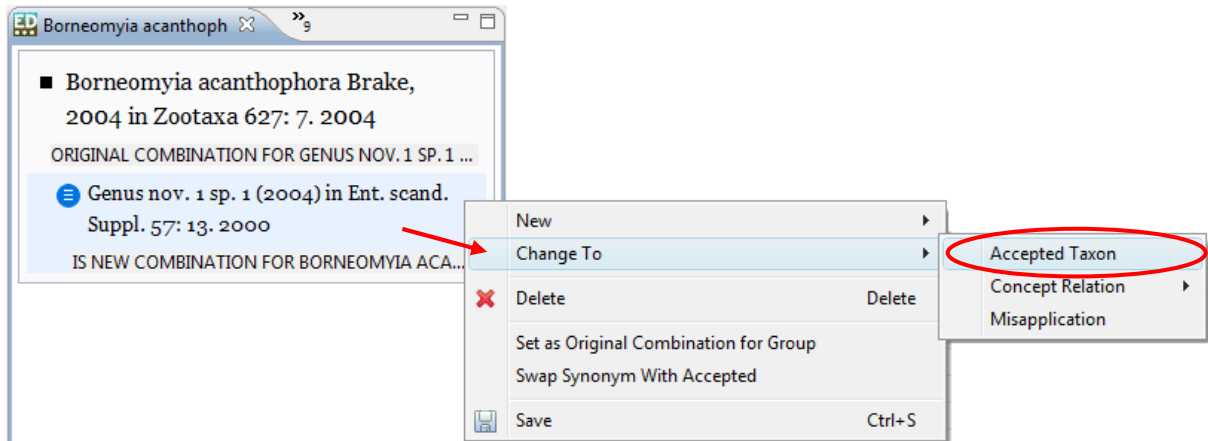
1. The accepted name to which the synonym you wish to delete has to be open in the **Freetext** panel (see [The Freetext Panel](#) on page 26 to learn how to search for and open a taxon record).
2. When the record is open, point the mouse arrow into the text box of the synonym you want to delete within the **Freetext** panel.
3. Click the right mouse button; a drop-down menu will appear.
4. Click the **delete** option.



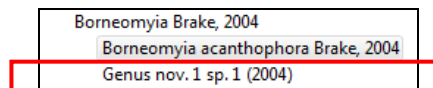
5. Save your changes (see [Saving your Work](#) on page 62).

8.6 Changing a Synonym to an Accepted Name

1. The accepted name taxon record which has the synonym attached to it that you wish to change to an accepted name has to be open in the **Freetext** panel (see [The Freetext Panel](#) on page 26 to learn how to search for and open a taxon record).
2. Right-click anywhere within the text box of the synonym in the **Freetext** panel; a drop-down menu will appear.
3. Point the mouse arrow over the **Change To** option; a new drop-down menu will appear.
4. Click the **Accepted Name** option:

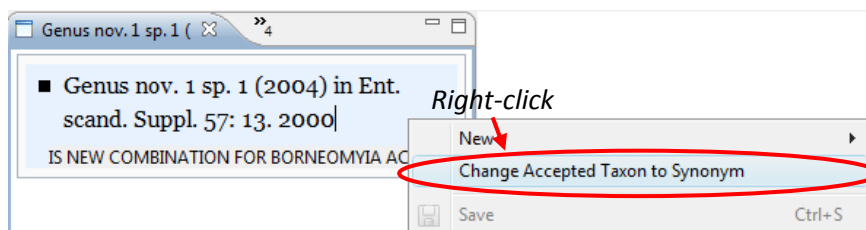


5. Save your changes (see [Saving Synonyms](#) on page 66 above); your changes will appear in the **Taxonomic Tree** panel:



8.7 Changing an Accepted Name to a Synonym

1. The accepted name taxon record that you wish to change to a synonym has to be open in the **Freetext** panel (see [The Freetext Panel](#) on page 26 to learn how to search for and open a taxon record).
2. Right-click anywhere within the text box of the taxon record in the **Freetext** panel; a drop-down menu will appear.
3. Click on the option “Change Accepted Taxon to a Synonym”:

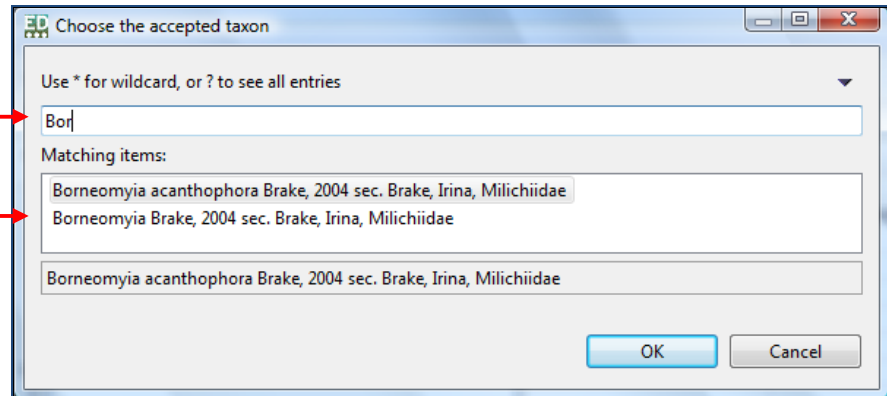


The “Choose the accepted taxon” pop-up box will open.

4. Enter the name of the accepted name that you wish to attach the synonym to in the search bar at the top of the pop-up box; as you type, matching entries will be filtered automatically and will be shown in the “Matching items” box beneath the search bar:

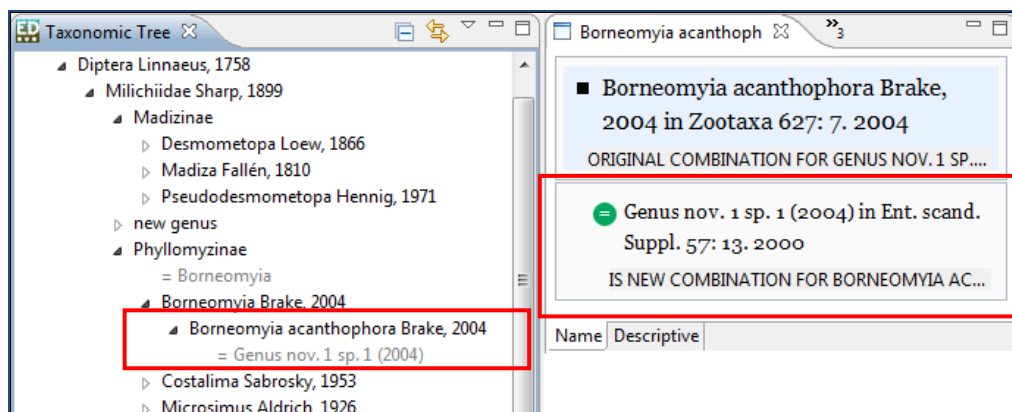
Type the name of the accepted taxon here

Matching entries will be shown here



5. Select the desired accepted name by either:
 - a. Point the mouse cursor to the desired accepted name and clicking the left mouse button twice; or
 - b. Point the mouse cursor to the desired accepted name; click the left mouse button once and then click the OK button.

The “Choose the accepted taxon” pop-up box will close and the record that has been edited will be shown as a synonym in the Freetext panel and the Taxonomic Tree panel:

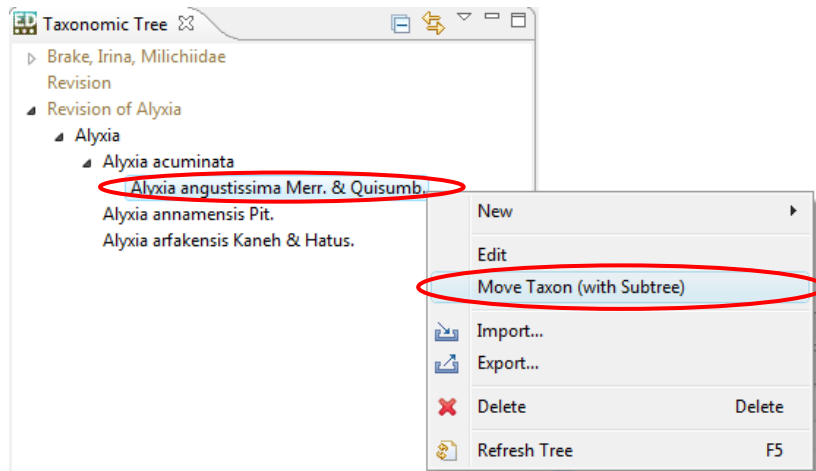


The change is automatically saved.

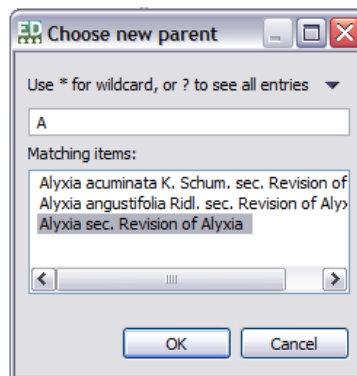
8.8 Moving the Position of Taxa within a Taxonomic Tree

If a taxonomic treatment has changed and you need to update your taxonomic tree to reflect this, this can be done easily via the **Move Taxon (with Subtree)** function. This function allows you to move a taxon with any associated synonyms and child taxa.

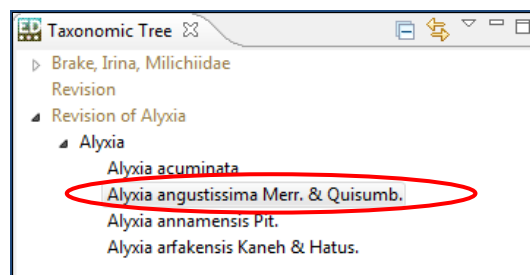
1. Point the mouse arrow at the taxon name which you want to change within the **Taxonomic Tree** panel.
2. Click the right mouse button; a drop-down menu will appear.
3. Click the **Move Taxon (with Subtree)** option:



- The “Choose new parent” pop-up box will open. In the text box at the top of the box, enter a term to search for the parent taxon to which you would like to move the child to. As you type the Taxonomic Editor will automatically search for matching taxon names. You can also use (*) to search using part of the name, or (?) to see all entries. A list will appear with matching taxon names:



- Click on the name of the desired parent taxon.
- Click the **OK** button or press **Return** on the keyboard. Alternatively, simply double-click the name of the desired parent taxon.
- The location of the selected child taxon will be moved within the Taxonomic Tree and will be saved automatically:



9.0 Adding Descriptive Data to Taxon Record

There is a variety of types of descriptive data that can be added to a taxon (shown below). If you do not need to use all of these kinds of data you can remove the available descriptive data types via the **Preferences** menu as explained in [Show/Hide Options of Drop-Down Menus](#) on page 31. Due to the variety of data types available, examples will be given here rather than instructions specific to every data type.

Please Note: The Descriptive Data element is under construction and there may be some changes to later versions of the Taxonomic Editor.

9.1 Types of Descriptive Data

The descriptive data tab allows you to attach descriptive data to each taxon within your taxonomic tree. The following types of data can be included:

Abstract	Discussion	Observation
Acknowledgements	Distribution	Occurrence
Additional Publication	Ecology	Pathogen Agent
Anatomy	Etymology	Phenology
Biology and Ecology	Host Plant	Protologue
Citation	Individuals Association	Specimen
Common Name	Introduction	Synopsis
Conservation	Key	Unknown Feature Type
Cultivation	Materials Examined	Uses
Description	Materials Methods	
Diagnosis	Multiple	

The format of the types of descriptive data varies; for some the data is input as freetext but for others data must be chosen from options given in drop-down menus.

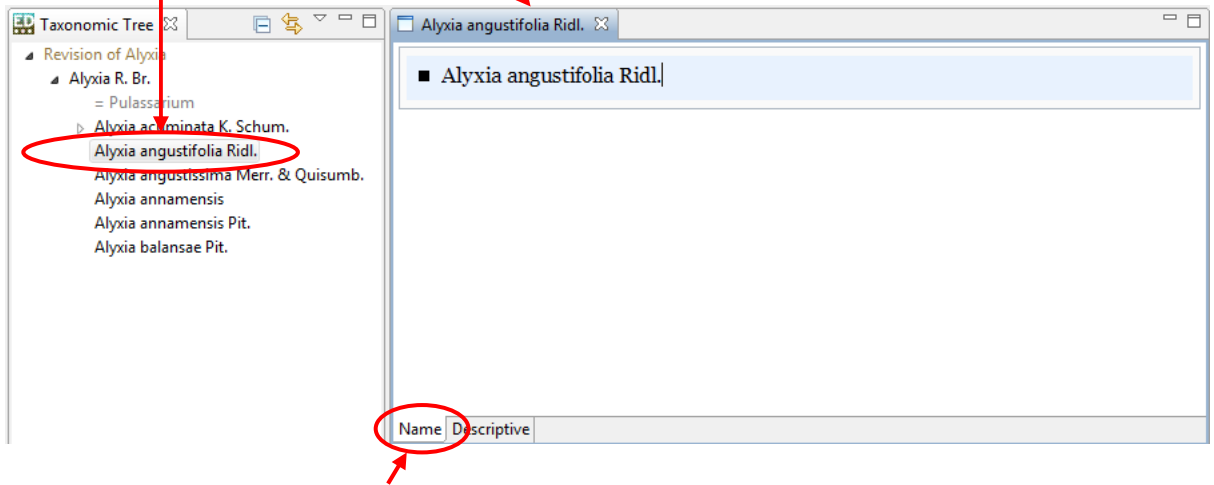
Please Note: The options given to you in the drop-down menus can be customised using the **Preferences** menu (see [Show/Hide Options of Drop-Down Menus](#) on page 31).

9.2 Opening the Descriptive Tab for a Taxon

The descriptive data tab is located in the **Freetext** panel. A taxon has to be included in the **Taxonomic Tree** panel and has to be activated within the **Freetext** panel before descriptive data can be added to that taxon.

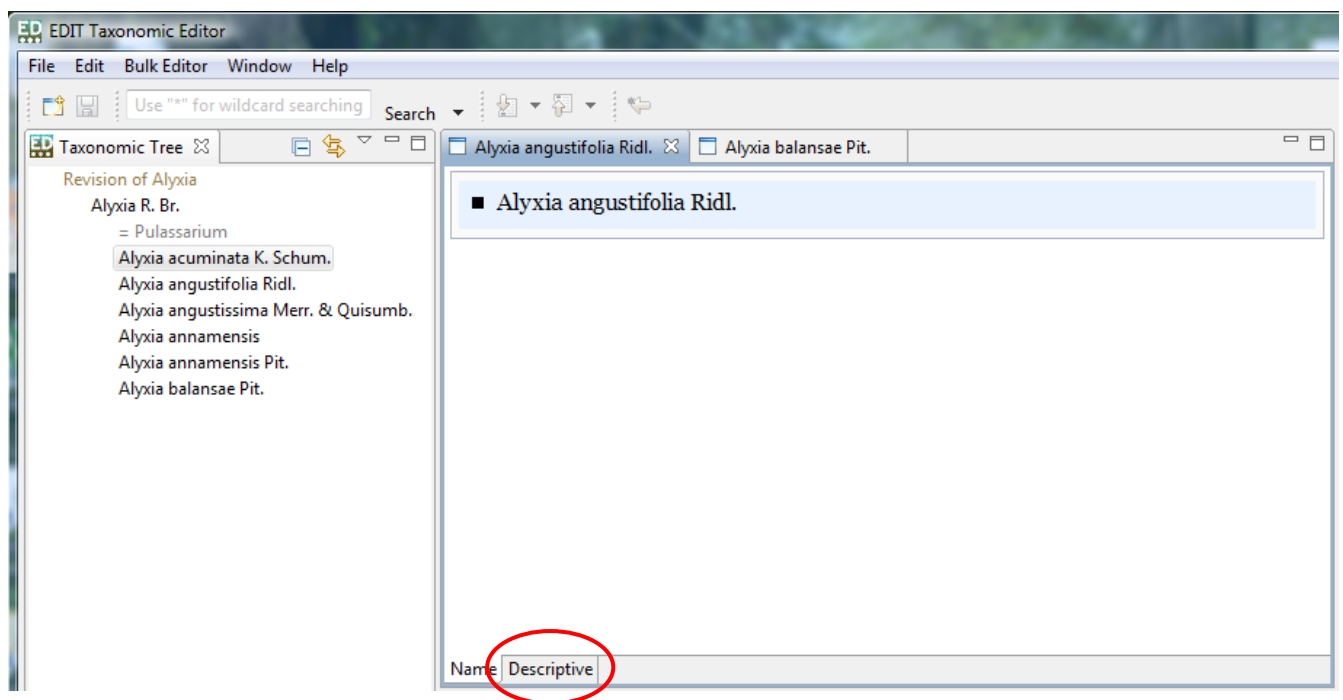
Any taxon listed in the Taxonomic Tree panel can be opened in the **Freetext** panel by double-clicking it in the **Taxonomic Tree** panel. This is the equivalent of opening a word processing file within the database. The taxon record will be opened in the **Freetext** panel headed by a tab titled with the taxon name:

Double-click here and the taxon opens here in a new tab

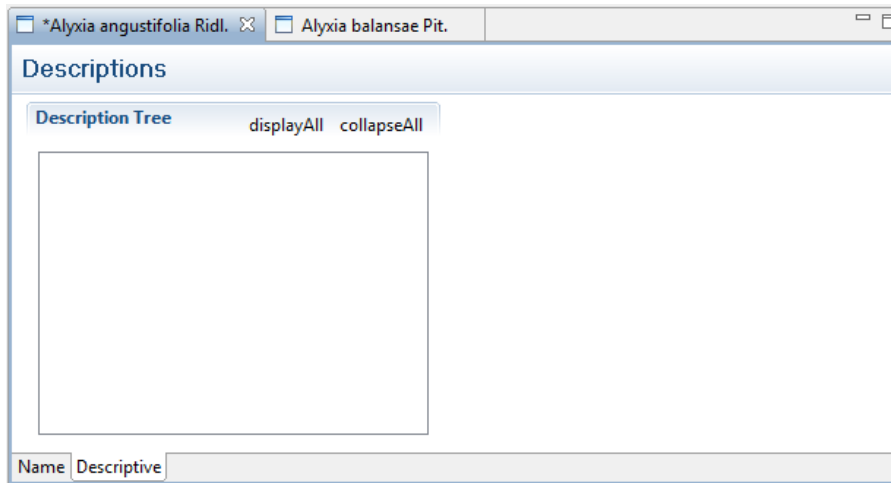


The default tab open will be the **Name** tab

To access the **Descriptive** data tab you need to click the “Descriptive” tab at the bottom of the **Freertext** panel:



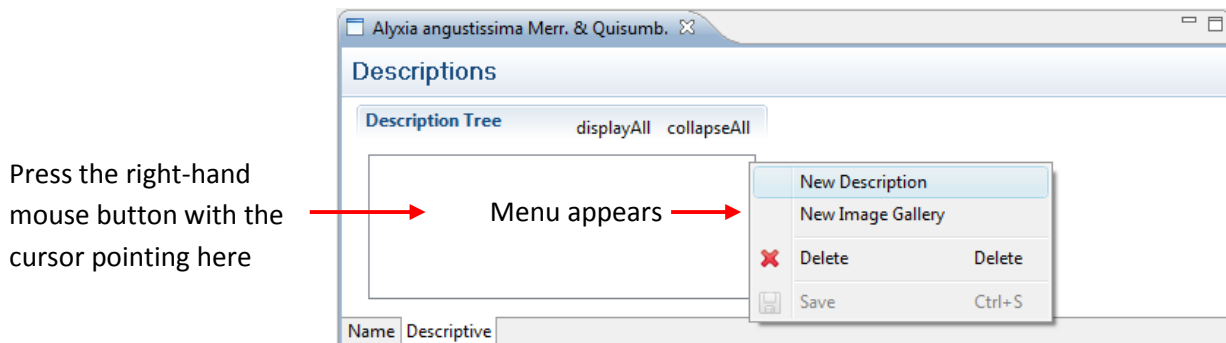
The Descriptive data tab will open:



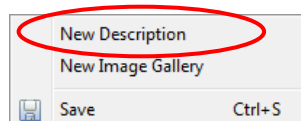
9.3 Adding a Description Tree to a Taxon

The taxon must first be activated in the **Freetext** panel; see the section above. To access the Descriptions menu do the following:

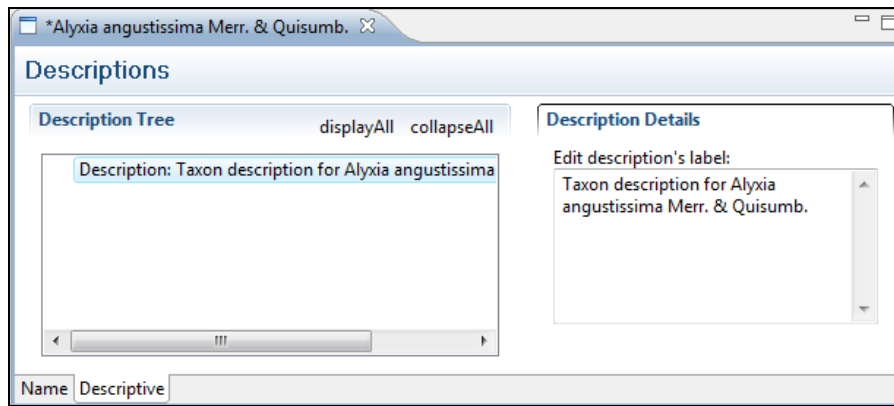
1. Point the mouse cursor in the “Description Tree” box.
2. Press the right-hand mouse button; a menu will appear:



3. Click the option “**New Description**”:



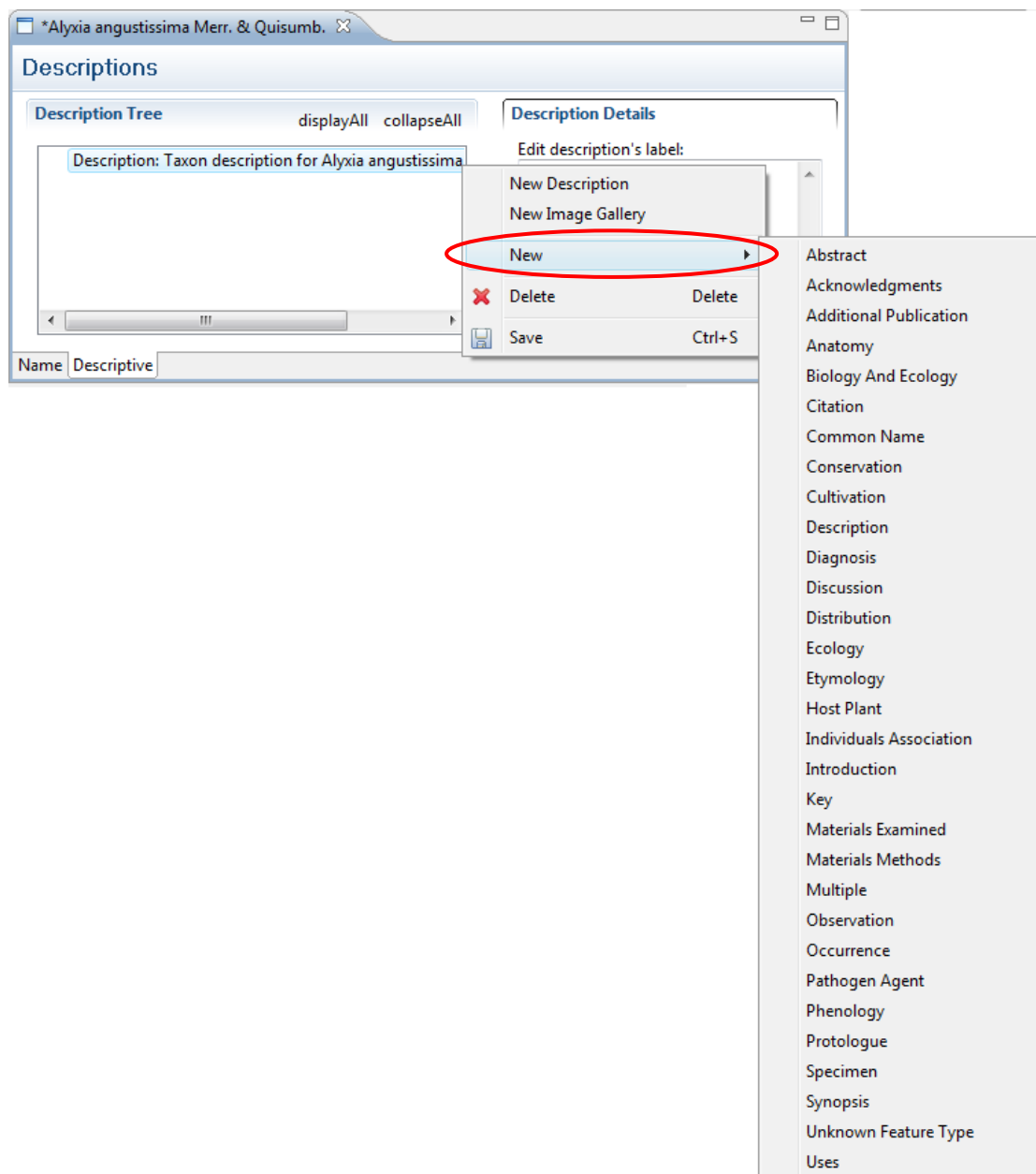
An entry will appear in the Description Tree and the “**Description Details**” box will open to the right of the Description Tree:



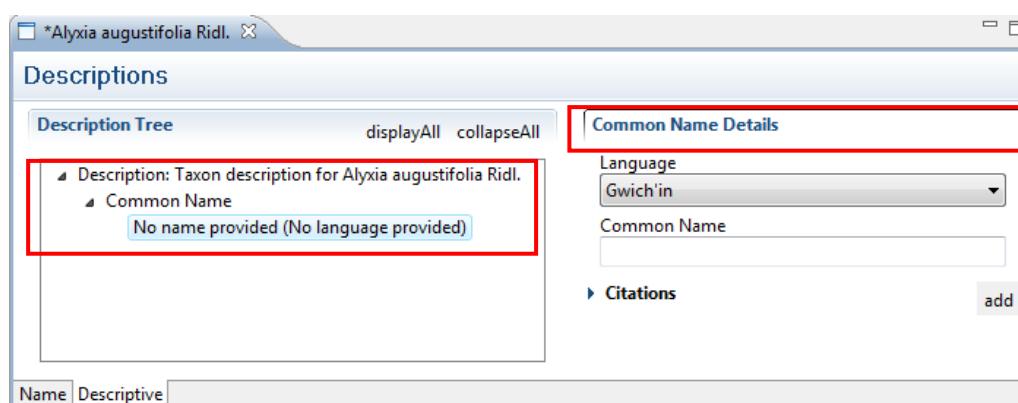
9.4 Building a Description Tree by adding Descriptive Data Types

A description tree must first be created for the taxon; see the section above.

1. Point the mouse cursor at the entry in the **Description Tree** box.
2. Press the right-hand mouse button; a menu will appear.
3. Point the mouse cursor at the **“New”** option in the menu; a drop-down menu of all available descriptive data types will be shown:



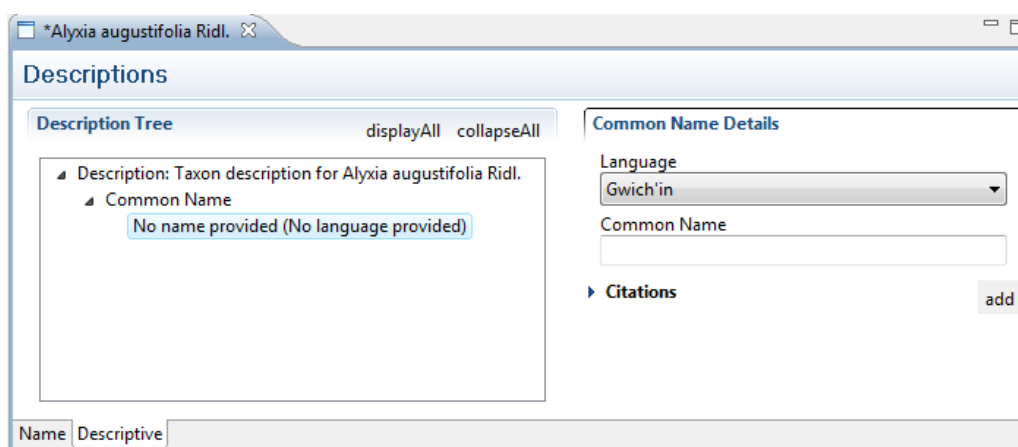
4. Click on the descriptive data type that you wish to enter for the taxon, for example "Common Name"; the data type will be added to the **Description Tree** and its specific data entry box will be activated to the right of the Description Tree:



A customised Descriptive Tree consisting of different description types can be created in this way. As stated previously the format of the types of descriptive data varies; for some the data is input as free text but for others data must be chosen from options given in a drop-down menu. Therefore examples of how to input certain descriptive data types will be given in the following sections, rather than showing how to input data for each data type.

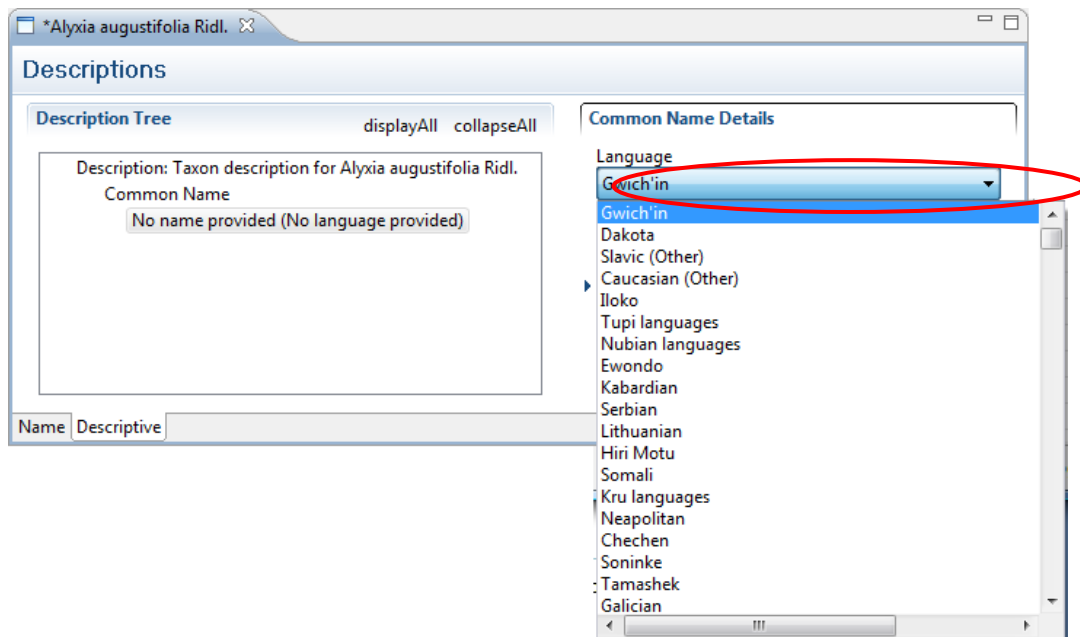
9.5 Adding Common Name Descriptive Data to a Taxon Record

Add the descriptive data type of “Common Name” as described in section 8.4 above. The **Descriptive** tab in the **Freertext** panel should look like this:



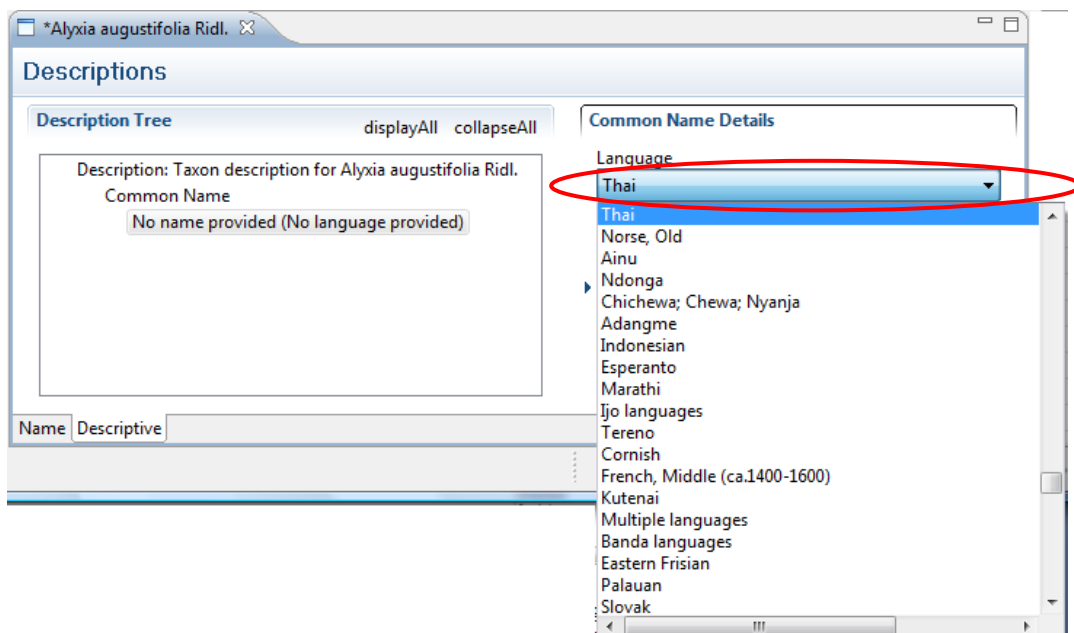
Tip! Each individual panel of the Taxonomic Editor can be resized; if you are having difficulties viewing the entire Descriptions panel you can use the arrows which appear at the top, bottom, left and right of the panel to resize it (see 4.3.2 Changing Panel Sizes on page 25). In the Descriptions box, you can also change the ratio of the size of the Description Tree box on the left to the Details box on the right. If you hover the mouse arrow between the two boxes a left-right arrow will appear which allows you to perform the resize.

1. Click in the “Language” field in the **Common Name Details** box; the field will be highlighted and a drop-down menu will appear:

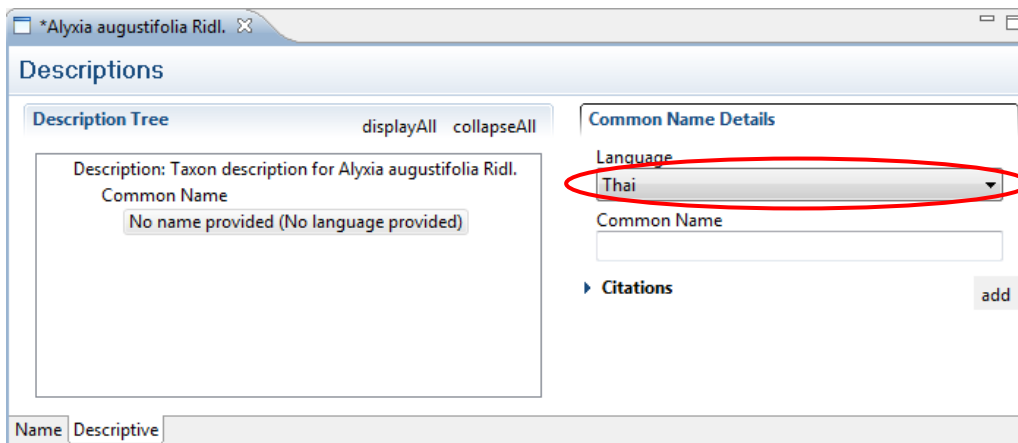


2. Enter the first digit of the name of the language. The first language name that begins with that letter will be shown. Continue to enter the first digit of the name until the language you wish to select is shown in the highlighted box.

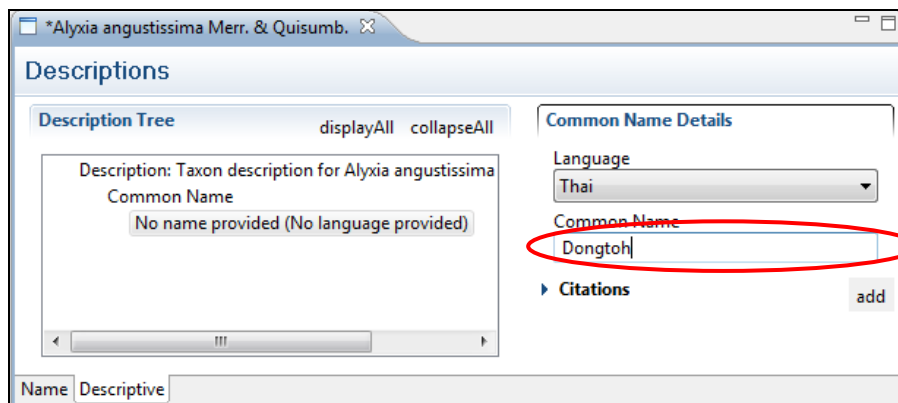
For example, to input the language of the common name as “Thai”, after clicking and highlighting the Language field, press “T” on the keyboard. Repeat the pressing until the name “Thai” is shown in the Language field:



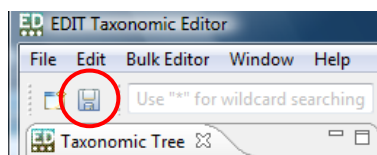
3. When the language you want to select is shown in the Language field, press return on the keyboard to confirm your selection; the drop-down menu will close and your selection will be shown in the Language field:



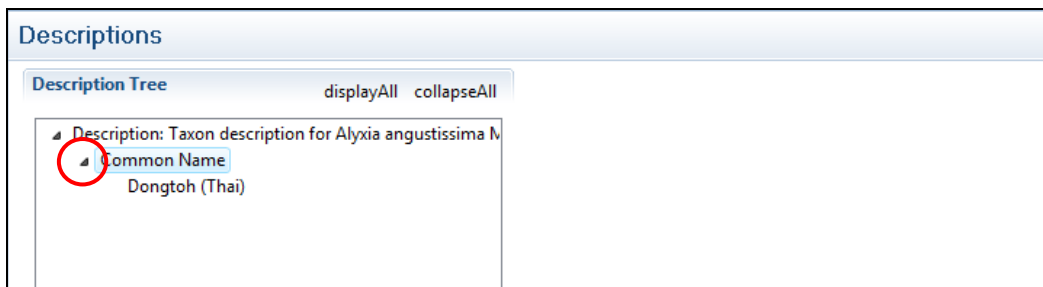
4. Click in the “**Common Name**” field in the **Common Name Details** box; the cursor will appear in the box.
5. Type in the common name of the activated Taxon; the text will appear in the Common Name field:



6. Save the changes by clicking on the Save icon:

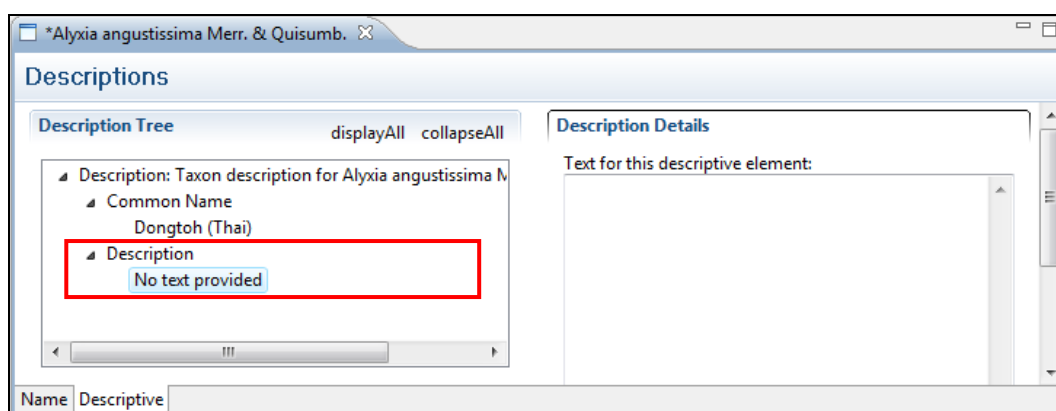


Please Note: the Common Name menu in the Description Tree is not visibly updated at this point. However, if you close the Common Name menu and then re-open it by clicking twice on the arrow to the left, you will see that the data you have input has been saved (see below). Also, you will notice that as you close the Common Name menu, the Common Name Details box to the right of the Description Tree will also close.



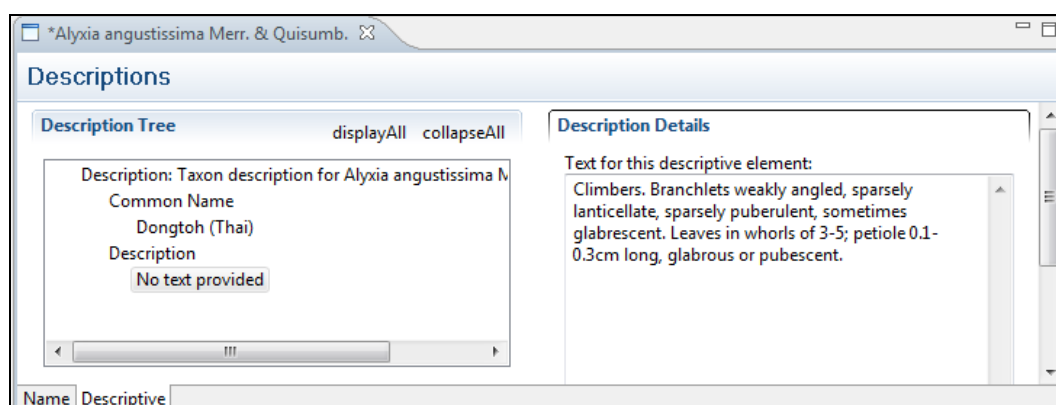
9.6 Adding a Species Description to a Taxon Record

Add the descriptive data type of “Description” as described in section 8.4 above. The **Descriptive** tab in the **Freetext** panel should look like this:



As with several other descriptive data types available, the description of a species is added as free text.

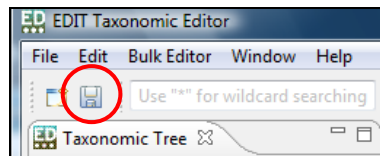
1. Point the mouse cursor in the Description Details box; the cursor will appear.
2. Type in your species description, for example:



Tip! You can also cut and paste text from a word document or another database where you store taxonomic information. Simply highlight the text you want to copy from the original document, press Ctrl on your keyboard and then C whilst still holding the Ctrl button. Release both buttons. You have

just copied the text. Now click in the box of the Taxonomic Editor where you would like to paste the text and press Ctrl and then V whilst still holding the Ctrl button. The text will be pasted.

3. Save the changes by clicking on the Save icon:



Please Note: the Description menu in the Description Tree is not visibly updated at this point. However, if you close the Description menu and then re-open it by clicking twice on the arrow to the left, you will see that the data you have input has been saved (see below). Also, you will notice that as you close the Description menu, the Description Details box to the right of the Description Tree will also close.